

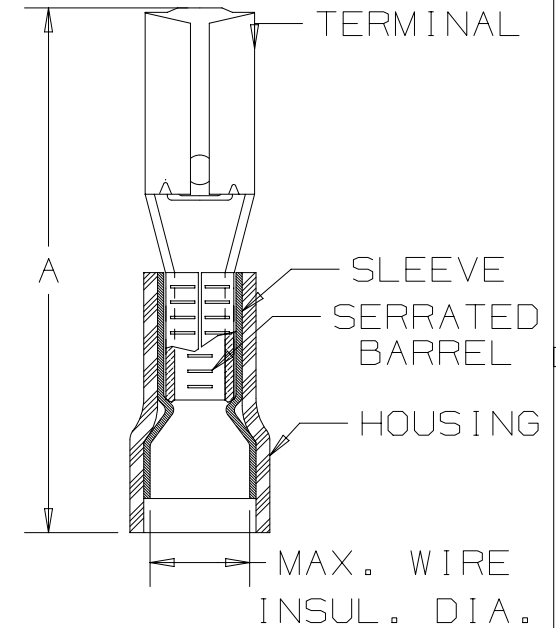
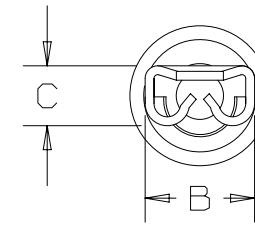
PANDUIT PART #	TAB SIZE	WIRE RANGE AWG / mm ²	MAX WIRE INSUL. DIA.	DIMENSIONS - in [mm]		
				A ± .03 [0,8]	B ± .01 [0,3]	C ± .01 [0,3]
DNF18-110	.110 X .032 [2,8 X 0,8]	22-18 [0,5-1,0]	.100 [2,54]	.69 [17,5]	.15 [3,8]	.08 [2,0]
DNF18-111	.110 X .020 [2,8 X 0,5]	22-18 [0,5-1,0]	.100 [2,54]	.69 [17,5]	.15 [3,8]	.07 [1,8]

UL & CSA TOOLS (DIES)
CT-520
CT-1525 (A POCKET)
CT-2500 (CT-2525CH: A PKT)

PANDUIT APPROVED TOOLS
CT-100A
CT-600-A

NOTES:

- UL LISTED AND CSA CERTIFIED FOR:
 - #22-18 AWG STRANDED COPPER WIRE ONLY
 - 194°F [90°C] MAX. OPERATING TEMPERATURE
 - 300V MAX VOLTAGE RATING
- MATERIAL:
 - STAMPING: .010" [0,25mm] THK BRASS, TIN PLATED
 - HOUSING: NYLON, RED
 - SLEEVE: BRASS, TIN PLATED
- SEE www.panduit.com FOR PACKAGE QUANTITIES
- INSERTION/WITHDRAWAL FORCES:
 - 1ST INSERTION MAX: 12 lbs. [53 N]
 - 1ST WITHDRAWAL MAX: 14 lbs. [62 N]
 - 1ST WITHDRAWAL MIN: 2 lbs. [9 N]
- DIMENSIONS IN BRACKETS ARE METRIC EQUIVALENT
- WIRE STRIP LENGTH: 9/32" ^{+1/32}₋₀ [7,1mm ^{+0,8}₋₀]



LISTED
20H3
E78522



CERTIFIED
LR31212

TITLE		#22-18 BARREL NYLON INSULATED FEMALE DISCONNECT, FUNNEL WIRE ENTRY		
		CUSTOMER DRAWING		
ITEM REVISION NAME		N41308BA/08		
DATASET FILE NAME		N41308BA/08		
UNLESS OTHERWISE SPECIFIED, DIMENSIONAL TOLERANCES ARE: IN [mm]		MATERIAL:		
.x ± .1 [2.54] .xxx ± .005 [.127]		SEE NOTES		
.xx ± .01 [.25] ANGLES ± 5°		DRAWING NUMBER:		
THIRD ANGLE PROJECTION		A41308		
DRAWN BY	DATE	CHK	SCALE	SIZE
DAW	1/92		NONE	A
REV		DATE		BY
08		5/17		JHNU
07		8/11		SHOR
06		7/11		SB
05		7/03		KLFU
APR		DESCRIPTION		ECN

D10100DA/20

X-ON Electronics

Largest Supplier of Electrical and Electronic Components

Click to view similar products for [Terminals](#) category:

Click to view products by [Panduit](#) manufacturer:

Other Similar products are found below :

[00-054007-01074-6](#) [00-054007-70206-1](#) [00-054007-70210-8](#) [00-054007-70217-7](#) [00-054007-70226-9](#) [00-054007-70228-3](#) [00-054007-70248-1](#) [00-054007-70256-6](#) [00-054007-70301-3](#) [00-054007-70316-7](#) [0-0320562-0](#) [00-054007-49560-4](#) [00-054007-70209-2](#) [00-054007-70225-2](#) [00-054007-70227-6](#) [00-054007-70231-3](#) [00-054007-70241-2](#) [00-054007-70242-9](#) [00-054007-70244-3](#) [00-054007-70246-7](#) [00-054007-70263-4](#) [00-054007-70288-7](#) [00-054007-70290-0](#) [00-054007-70300-6](#) [00-054007-70304-4](#) [01-2065-1-0216](#) [01-2900-1-04412](#) [00581P0075](#) [600TS-10](#) [60205-1](#) [604200-1](#) [605601-1](#) [60598-1-CUT-TAPE](#) [61314-6-C](#) [61810-3](#) [61-S](#) [61-SN](#) [626-0194](#) [62-NBM-A](#) [62-SN](#) [62-SP](#) [63-S](#) [640179-1](#) [M55155/059I03](#) [M55155/079C01](#) [M55155/099H02](#) [M55155/109H01](#) [M55155/109H02](#) [M55155/12XH05](#) [M55155/16XH02](#)