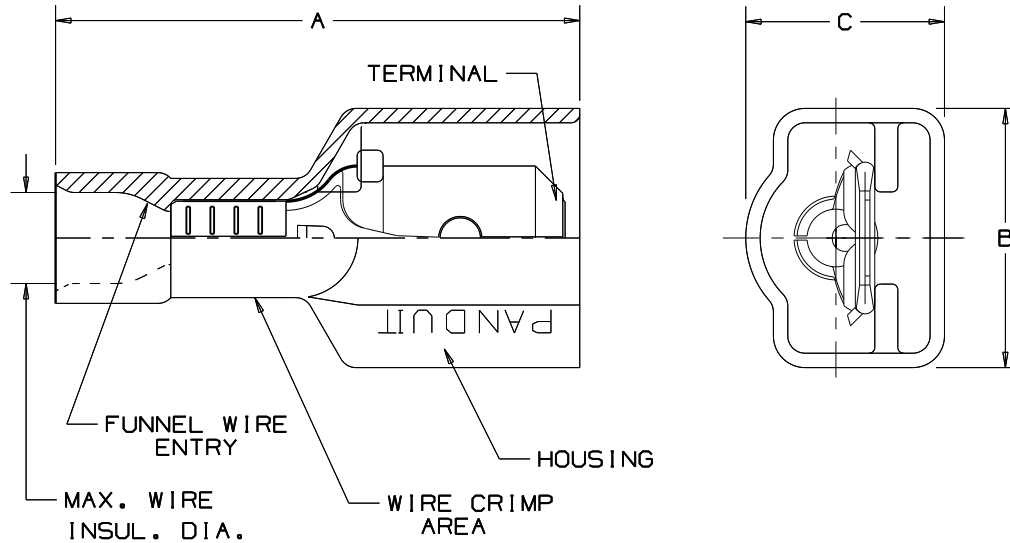


THIS COPY IS PROVIDED ON A RESTRICTED BASIS AND IS NOT TO BE USED IN ANY WAY DETRIMENTAL TO THE INTERESTS OF PANDUIT CORP.

NOTES:

1. UL LISTED AND CSA CERTIFIED FOR:
  - A. 600V MAX. VOLTAGE RATING.
  - B. 221°F (105°C) MAX. TEMP. RATING (CSA).
  - C. 257°F (125°C) MAX. TEMP. RATING (UL).
  - D. STRANDED COPPER WIRE ONLY.
2. MATERIAL:
  - A. STAMPING-CDA 260 BRASS, NICKEL PLATED
  - B. HOUSING-TYPE 6/6 NYLON
3. DIMENSIONS IN BRACKETS ARE IN mm OR mm<sup>2</sup>
4. COLORS ARE TRANSLUCENT
5. WIRE STRIP LENGTH:  $9/32^{+1/32}_0$  (7.1<sup>+8</sup><sub>0</sub>)
6. SEE [www.panduit.com](http://www.panduit.com) FOR PART NUMBER SUFFIX DESIGNATION FOR PACKAGE SIZE.



PART NUMBER	TAB SIZE	WIRE RANGE AWG	COLOR (note 4)	MAX. INSUL.	DIMENSIONS in			CRIMP TOOLS
					A ±.03	B ±.02	C ±.02	
DNF18-250F1M	.250 X .032 (6.3 X 0.8)	22-18 (0.5-1.0)	RED	.133 (3.38)	.90 (22.9)	.42 (10.7)	.27 (6.9)	CT-100A* (*DNF18 ONLY) CT-520 CT-600-A CT-1525 CT-2500
DNF14-250F1M	.250 X .032 (6.3 X 0.8)	16-14 (1.5-2.5)	BLUE	.158 (4.01)	.90 (22.9)	.42 (10.7)	.27 (6.9)	



LISTED  
587H  
E52164



CERTIFIED  
LR31212

**PANDUIT** CORP.

TINLEY PARK, ILLINOIS

LOOSE PC. FULLY INSULATED MALE DISCONNECT  
.250 X .032

REV	DATE	BY	DESCRIPTION	PM	CUST
08	8/11	SHOR	MODIFIED NOTE #6, ADDED CRIMP TOOLS		

DRAWN BY	JV	CHK'D	LM	SCALE		DRAWING NO.	A41325
----------	----	-------	----	-------	--	-------------	--------

## X-ON Electronics

Largest Supplier of Electrical and Electronic Components

*Click to view similar products for [Terminals](#) category:*

*Click to view products by [Panduit](#) manufacturer:*

Other Similar products are found below :

[00-054007-01074-6](#) [00-054007-70206-1](#) [00-054007-70210-8](#) [00-054007-70217-7](#) [00-054007-70226-9](#) [00-054007-70228-3](#) [00-054007-70248-1](#) [00-054007-70256-6](#) [00-054007-70301-3](#) [00-054007-70316-7](#) [0-0320562-0](#) [00-054007-49560-4](#) [00-054007-70209-2](#) [00-054007-70225-2](#) [00-054007-70227-6](#) [00-054007-70231-3](#) [00-054007-70241-2](#) [00-054007-70242-9](#) [00-054007-70244-3](#) [00-054007-70246-7](#) [00-054007-70263-4](#) [00-054007-70288-7](#) [00-054007-70290-0](#) [00-054007-70300-6](#) [00-054007-70304-4](#) [01-2065-1-0216](#) [01-2900-1-04412](#) [00581P0075](#) [600TS-10](#) [60205-1](#) [604200-1](#) [605601-1](#) [60598-1-CUT-TAPE](#) [61314-6-C](#) [61810-3](#) [61-S](#) [61-SN](#) [626-0194](#) [62-NBM-A](#) [62-SN](#) [62-SP](#) [63-S](#) [640179-1](#) [M55155/059I03](#) [M55155/079C01](#) [M55155/099H02](#) [M55155/109H01](#) [M55155/109H02](#) [M55155/12XH05](#) [M55155/16XH02](#)