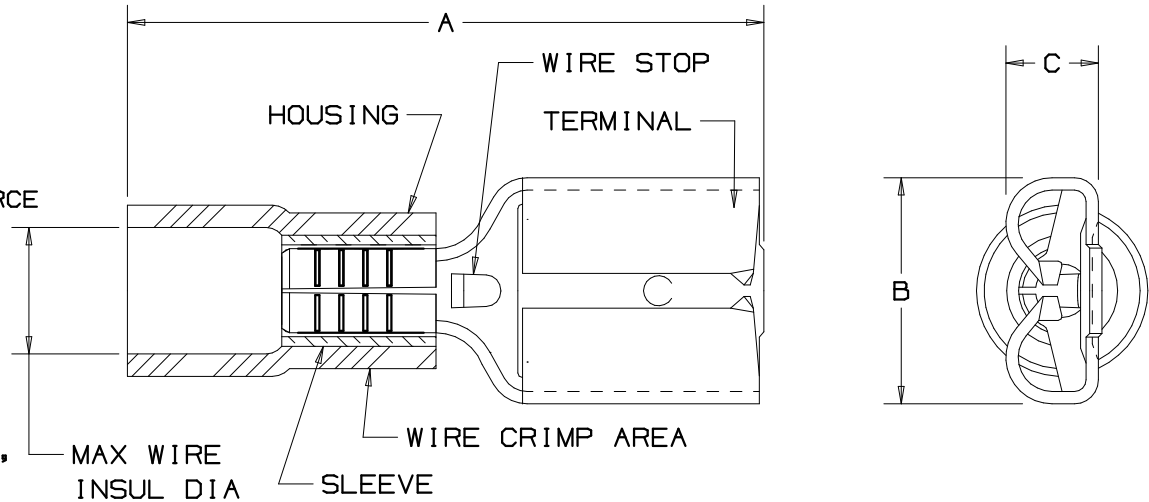


THIS COPY IS PROVIDED ON A RESTRICTED BASIS AND IS NOT TO BE USED IN ANY WAY DETRIMENTAL TO THE INTERESTS OF PANDUIT CORP.

PART NUMBER	TAB SIZE	WIRE RANGE AWG	COLOR	MAX. INSUL.	DIMENSIONS in.		
					A ±.03	B ±.01	C ±.01
DV10-250	.250 X .032	12-10	YELLOW	.229 (5.82)	1.03 (26.16)	.30 (7.62)	.13 (3.30)

NOTES:

- UL RECOGNIZED AND CSA CERTIFIED FOR:
  - 600V MAX VOLTAGE RATING
  - 194°F (90°C) MAX TEMP RATING
  - STRANDED COPPER WIRE ONLY
  - 6-12 LBS INITIAL INSERTION/WITHDRAWAL FORCE
- MATERIAL:
  - STAMPING-BRASS, TIN PLATED
  - HOUSING-VINYL
  - SLEEVE-BRASS, TIN PLATED
- DIMENSIONS IN BRACKETS ARE IN mm OR mm<sup>2</sup>
- INSTALLATION TOOLS: UL/CSA: CT-550, CT-1551, CT-1550  
 PANDUIT RECOMMENDED: CT-100, CT-160, CT-260, CT-460
- PACKAGE QTY: -L=50, -D=500
- WIRE STRIP LENGTH: 9/32 <sup>+1/32</sup><sub>-0</sub> (7.1 <sup>+8</sup><sub>-0</sub>)



CERTIFIED  
LR31212



RECOGNIZED  
E78522

06	6/06	DAW	DAW	REMOVED MAX. AMPERAGE NOTE			
05	7/03	KLFU	SKB	ADDED INTERNAL SERRATIONS	12453	SKB	TRO
04	1/01	KMD	SKB	CAD FILE SPEC. WAS N41199AA_PCD_03	8938	JAC	CCH
03	5/99	JKD		ADDED CT-1551 & CT-1550 TOOLS	07642		
02	3/95	MS	RLS	UPDATED NOTES AND DIMENSIONS	03048	LA	JB
REV	DATE	BY	CHK	DESCRIPTION	ECN #	CUST	PM

A41199\_06

**PANDUIT** CORP.

TINLEY PARK, ILLINOIS

FEMALE DISCONNECTS, VINYL INSULATED  
.250 X .032

DRAWN BY: FES, CHK'D: RLS, SCALE: NONE, DRAWING NO.: A41199

## X-ON Electronics

Largest Supplier of Electrical and Electronic Components

*Click to view similar products for [Terminals](#) category:*

*Click to view products by [Panduit](#) manufacturer:*

Other Similar products are found below :

[00-054007-01074-6](#) [00-054007-70206-1](#) [00-054007-70210-8](#) [00-054007-70217-7](#) [00-054007-70226-9](#) [00-054007-70228-3](#) [00-054007-70248-1](#) [00-054007-70256-6](#) [00-054007-70301-3](#) [00-054007-70316-7](#) [0-0320562-0](#) [00-054007-49560-4](#) [00-054007-70209-2](#) [00-054007-70225-2](#) [00-054007-70227-6](#) [00-054007-70231-3](#) [00-054007-70241-2](#) [00-054007-70242-9](#) [00-054007-70244-3](#) [00-054007-70246-7](#) [00-054007-70263-4](#) [00-054007-70288-7](#) [00-054007-70290-0](#) [00-054007-70300-6](#) [00-054007-70304-4](#) [01-2065-1-0216](#) [01-2900-1-04412](#) [00581P0075](#) [600TS-10](#) [60205-1](#) [604200-1](#) [605601-1](#) [60598-1-CUT-TAPE](#) [61314-6-C](#) [61810-3](#) [61-S](#) [61-SN](#) [626-0194](#) [62-NBM-A](#) [62-SN](#) [62-SP](#) [63-S](#) [640179-1](#) [M55155/059I03](#) [M55155/079C01](#) [M55155/099H02](#) [M55155/109H01](#) [M55155/109H02](#) [M55155/12XH05](#) [M55155/16XH02](#)