

THIS COPY IS PROVIDED ON A RESTRICTED BASIS AND IS NOT TO BE USED IN ANY WAY DETRIMENTAL TO THE INTERESTS OF PANDUIT CORP.

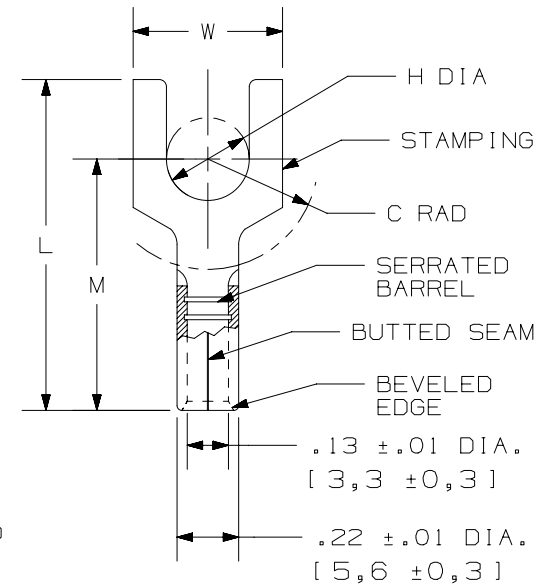
PANDUIT PART #	STUD SIZE		DIMENSIONS in. [mm]				
	ENGLISH	METRIC	L ±.03 [0,8]	W ±.01 [0,3]	C ±.015 [0,4]	M ±.03 [0,8]	H ±.01 [0,3]
E10-6FB	#6	M3	.75 [19,1]	.31 [7,9]	.22 [5,6]	.55 [14,0]	.15 [3,8]
E10-8FB	#8	M4	.78 [19,8]	.37 [9,4]	.22 [5,6]	.55 [14,0]	.17 [4,3]
E10-10FB	#10	M5	.78 [19,8]	.37 [9,4]	.23 [5,8]	.55 [14,0]	.20 [5,1]
E10-14FB	1/4"	M6	.89 [22,6]	.50 [12,7]	.30 [7,6]	.60 [15,2]	.27 [6,9]

UL & CSA TOOLS
CT-100A CT-200 CT-600-A (CT-570CH) CT-1570 CT-1701 (P10) CT-2500 (CT-2570CH)

PANDUIT APPROVED TOOLS
CT-160 CT-260

NOTES:

- UL LISTED & CSA CERTIFIED FOR:
 - A. #12-10 AWG [4,0-6,0 mm²] SOLID OR STRANDED COPPER WIRE
 - B. 302°F [150°C] MAX. OPERATING TEMPERATURE
 - C. 2000 VOLTS MAX
- MATERIAL:
 - A. STAMPING: .04" [1,0] THK COPPER, TIN PLATED
- WIRE STRIP LENGTH: 9/32" ^{+1/32}₋₀ [7,1mm ^{+0,8}₋₀]
- SEE www.panduit.com FOR PACKAGE QUANTITIES
- DIMENSIONS IN BRACKETS ARE METRIC EQUIVALENT



TITLE	
STRONGHOLD FORK TERMINAL NON-INSULATED, BUTTED SEAM #12-10 AWG	
CUSTOMER DRAWING	
ITEM REVISION NAME	00123SHK/00
DATASET FILE NAME	00123SHK_DC/00
UNLESS OTHERWISE SPECIFIED, DIMENSIONAL TOLERANCES ARE: IN [mm]	MATERIAL: SEE NOTES
.X ± .XX ±	.XXX ± ANGLES ±
	THIRD ANGLE PROJECTION
DRAWN BY JHNU	DATE 2/18
CHK TMR	SCALE N.T.S.
DRAWING NUMBER: SH41256	SHEET 1 OF 1
REV	DATE
BY	CHK
APR	DESCRIPTION
00	02/18
JHNU	TMR
RGB	RELEASED
00123SH	ECN

D10100DA/12

X-ON Electronics

Largest Supplier of Electrical and Electronic Components

Click to view similar products for [Terminals](#) category:

Click to view products by [Panduit](#) manufacturer:

Other Similar products are found below :

[00-054007-01074-6](#) [00-054007-70206-1](#) [00-054007-70210-8](#) [00-054007-70217-7](#) [00-054007-70226-9](#) [00-054007-70228-3](#) [00-054007-70248-1](#) [00-054007-70256-6](#) [00-054007-70301-3](#) [00-054007-70316-7](#) [0-0320562-0](#) [00-054007-49560-4](#) [00-054007-70209-2](#) [00-054007-70225-2](#) [00-054007-70227-6](#) [00-054007-70231-3](#) [00-054007-70241-2](#) [00-054007-70242-9](#) [00-054007-70244-3](#) [00-054007-70246-7](#) [00-054007-70263-4](#) [00-054007-70288-7](#) [00-054007-70290-0](#) [00-054007-70300-6](#) [00-054007-70304-4](#) [01-2065-1-0216](#) [01-2900-1-04412](#) [00581P0075](#) [600TS-10](#) [60205-1](#) [604200-1](#) [605601-1](#) [60598-1-CUT-TAPE](#) [61314-6-C](#) [61810-3](#) [61-S](#) [61-SN](#) [626-0194](#) [62-NBM-A](#) [62-SN](#) [62-SP](#) [63-S](#) [640179-1](#) [M55155/059I03](#) [M55155/079C01](#) [M55155/099H02](#) [M55155/109H01](#) [M55155/109H02](#) [M55155/12XH05](#) [M55155/16XH02](#)