

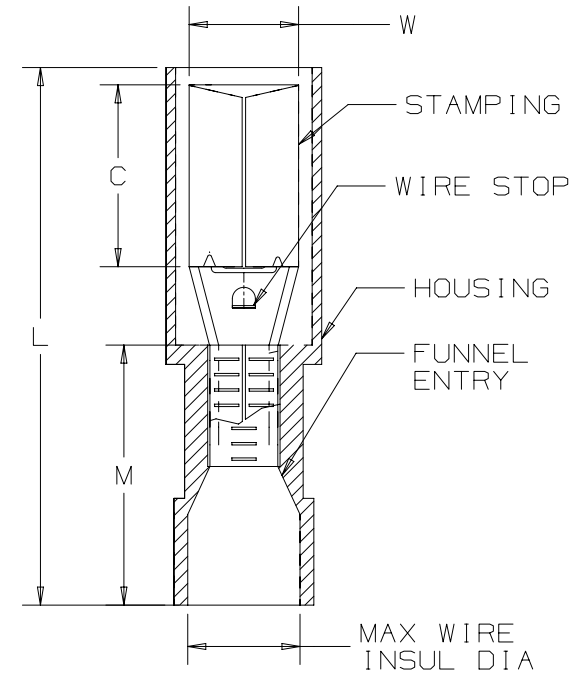
THIS COPY IS PROVIDED ON A RESTRICTED BASIS AND IS NOT TO BE USED IN ANY WAY DETRIMENTAL TO THE INTERESTS OF PANDUIT CORP.

PANDUIT PART #	WIRE RANGE AWG [mm ²]	COLOR	DIMENSIONS in. [mm]				MAX WIRE INSUL DIA	WIRE STRIP LENGTH in [mm] + 1/32 [0.8] -0	TOOLS
			L ± .04 [1,1]	W ± .01 [0,3]	C ± .02 [0,4]	M ± .02 [0,6]			
EBNF18-4FIB	#22-16 [0.5-1.5]	RED	.99 [25.2]	.15 [3.9]	.28 [7.0]	.43 [11.0]	.145 [3.7]	9/32" [6.8]	KST2000C
EBNF14-4FIB*	#16-14 [1.5-2.5]	BLUE	.99 [25.2]	.15 [3.9]	.28 [7.0]	.43 [11.0]	.165 [4.2]		

*NOT UL RECOGNIZED

NOTES:

- UL RECOGNIZED FOR:
 - A. STRANDED COPPER WIRE ONLY - INTERNAL WIRING
 - B. NOT FOR INTERRUPTING CURRENT
 - C. 185°F (85°C) MAX TEMP RATING
 - D. 600V MAX VOLTAGE RATING
- MATERIAL:
 - A. STAMPING - .016" [0.4] THICK BRASS, TIN PLATED
 - B. HOUSING - NYLON
- SEE WWW.PANDUIT.COM FOR PACKAGE QUANTITIES
- DIMENSIONS IN BRACKETS ARE METRIC EQUIVALENT.



TITLE		STRONGHOLD FEMALE BULLET CONNECTORS (156 SERIES) FULLY NYLON INSULATED, #22-14 AWG	
CUSTOMER DRAWING			
ITEM REVISION NAME	00123SSP/00	PANDUIT	
DATASET FILE NAME	00123SSP/00		
UNLESS OTHERWISE SPECIFIED, DIMENSIONAL TOLERANCES ARE: IN [mm]		MATERIAL:	
.x ± .1 [2.54] .xxx ± .005 [0.127]		SEE NOTES	
.xx ± .01 [0.25] ANGLES ± 5°		DRAWING NUMBER:	
THIRD ANGLE PROJECTION		00123SSP-DC	
DRAWN BY	DATE	CHK	SCALE
JHNU	2/18		NONE
REV	DATE	BY	CHK
DESCRIPTION	ECN	SHT 1 OF 1	SIZE
			A

D10100DA/20

X-ON Electronics

Largest Supplier of Electrical and Electronic Components

Click to view similar products for [Terminals](#) category:

Click to view products by [Panduit](#) manufacturer:

Other Similar products are found below :

[00-054007-01074-6](#) [00-054007-70206-1](#) [00-054007-70210-8](#) [00-054007-70217-7](#) [00-054007-70226-9](#) [00-054007-70228-3](#) [00-054007-70248-1](#) [00-054007-70256-6](#) [00-054007-70301-3](#) [00-054007-70316-7](#) [0-0320562-0](#) [00-054007-49560-4](#) [00-054007-70209-2](#) [00-054007-70225-2](#) [00-054007-70227-6](#) [00-054007-70231-3](#) [00-054007-70241-2](#) [00-054007-70242-9](#) [00-054007-70244-3](#) [00-054007-70246-7](#) [00-054007-70263-4](#) [00-054007-70288-7](#) [00-054007-70290-0](#) [00-054007-70300-6](#) [00-054007-70304-4](#) [01-2065-1-0216](#) [01-2900-1-04412](#) [00581P0075](#) [600TS-10](#) [60205-1](#) [604200-1](#) [605601-1](#) [60598-1-CUT-TAPE](#) [61314-6-C](#) [61810-3](#) [61-S](#) [61-SN](#) [626-0194](#) [62-NBM-A](#) [62-SN](#) [62-SP](#) [63-S](#) [640179-1](#) [M55155/059I03](#) [M55155/079C01](#) [M55155/099H02](#) [M55155/109H01](#) [M55155/109H02](#) [M55155/12XH05](#) [M55155/16XH02](#)