

THIS COPY IS PROVIDED ON A RESTRICTED BASIS AND IS NOT TO BE USED IN ANY WAY DETRIMENTAL TO THE INTERESTS OF PANDUIT CORP.

PANDUIT PART #	WIRE RANGE AWG [mm ²]	TAB SIZE INCH [mm]	DIMENSIONS in. [mm]		
			L± .03 [0,8]	H± .01 [0,3]	W± .01 [0,3]
ED18-250	#22-18 [0,5-1,0]	.250 X .032 [6,3 X 0,8]	.66 [16,8]	.12 [3,0]	.30 [7,6]
ED14-250*	#16-14 [1,5-2,5]	.250 X .032 [6,3 X 0,8]	.66 [16,8]	.12 [3,0]	.30 [7,6]



LISTED
20H3
E78522



CERTIFIED
LR31212

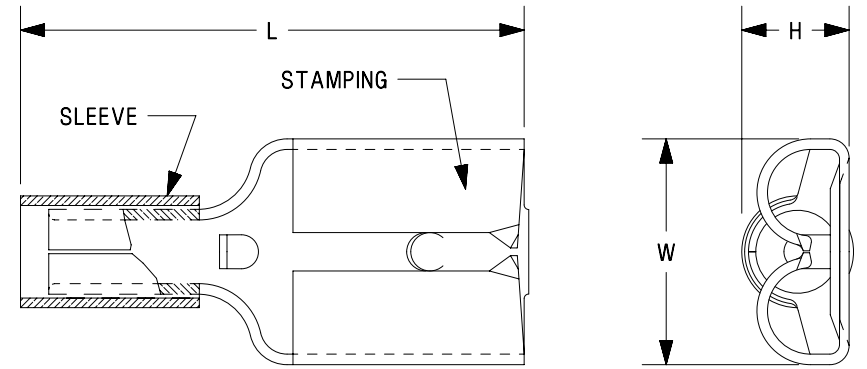


RECOGNIZED
E78522

* UL RECOGNIZED ONLY

NOTES:

- USED FOR:
 - A. STRANDED COPPER WIRE ONLY
 - B. 302°F [150°C] MAX OPERATING TEMPERATURE
 - C. 2000V MAX VOLTAGE
- MATERIAL:
 - A. STAMPING: .016 [0,41] TIN PLATED BRASS
 - B. SLEEVE: TIN PLATED BRASS
- INSTALLATION TOOLS:
 - A. UL LISTED AND CSA CERTIFIED:
CT-100A, CT-200, CT-570, CT-1570, CT-2457CH, CT-2500 W/CT-2570CH
 - B. UL RECOGNIZED:
CT-100A, CT-200, CT-600-A W/CT-570CH, CT-1570, CT-2457CH CT-2500 W/CT-2570CH
- WIRE STRIP LENGTH: 9/32" ^{+1/32} ₋₀ [7,1mm ^{+0,8} ₋₀]
- SEE WWW.PANDUIT.COM FOR PACKAGE QUANTITIES INDICATED BY PART NUMBER SUFFIX
- DIMENSIONS IN BRACKETS ARE METRIC EQUIVALENT



TITLE STRONGHOLD FEMALE DISCONNECT (250 SERIES) NON-INSULATED, SLEEVED BARREL #22-14 AWG CUSTOMER DRAWING					
ITEM REVISION NAME			00123SHD/00		
DATASET FILE NAME			00123SHD_DC_00A		
UNLESS OTHERWISE SPECIFIED, DIMENSIONAL TOLERANCES ARE: IN [mm]			MATERIAL:		
.x ± .1 [2.54] .xxx ± .005 [.127]			SEE NOTES		
.xx ± .01 [.25] ANGLES ± 5 °			DRAWING NUMBER:		
THIRD ANGLE PROJECTION			SH41304		
DRAWN BY	DATE	CHK	SCALE	SIZE	
TMR	10.10.17	JHNU	N.T.S.	SHEET 1 OF 1	A

00	10.10.17	TMR	JHNU	RGB	DRAWING RELEASED	00123SH
REV	DATE	BY	CHK	APR	DESCRIPTION	ECN

D101000DA/12

X-ON Electronics

Largest Supplier of Electrical and Electronic Components

Click to view similar products for [Terminals](#) category:

Click to view products by [Panduit](#) manufacturer:

Other Similar products are found below :

[00-054007-01074-6](#) [00-054007-70206-1](#) [00-054007-70210-8](#) [00-054007-70217-7](#) [00-054007-70226-9](#) [00-054007-70228-3](#) [00-054007-70248-1](#) [00-054007-70256-6](#) [00-054007-70301-3](#) [00-054007-70316-7](#) [0-0320562-0](#) [00-054007-49560-4](#) [00-054007-70209-2](#) [00-054007-70225-2](#) [00-054007-70227-6](#) [00-054007-70231-3](#) [00-054007-70241-2](#) [00-054007-70242-9](#) [00-054007-70244-3](#) [00-054007-70246-7](#) [00-054007-70263-4](#) [00-054007-70288-7](#) [00-054007-70290-0](#) [00-054007-70300-6](#) [00-054007-70304-4](#) [01-2065-1-0216](#) [01-2900-1-04412](#) [00581P0075](#) [600TS-10](#) [60205-1](#) [604200-1](#) [605601-1](#) [60598-1-CUT-TAPE](#) [61314-6-C](#) [61810-3](#) [61-S](#) [61-SN](#) [626-0194](#) [62-NBM-A](#) [62-SN](#) [62-SP](#) [63-S](#) [640179-1](#) [M55155/059I03](#) [M55155/079C01](#) [M55155/099H02](#) [M55155/109H01](#) [M55155/109H02](#) [M55155/12XH05](#) [M55155/16XH02](#)