

- 1) Bonding surface must be free of any loose particles, dirt, grease and other contaminants.
- 2) Remove the protective film from the mixer cup.
- 3) Using a stir stick, push down the center of the cup (Figure 1).
- 4) Scrape the two parts of the epoxy into the center of the cup and mix thoroughly (Figures 2 and 3). Note: Epoxy hardens quickly. Application time is 5 minutes at 70°F (21°C).
- 5) Apply 1/3 of the mixed epoxy to the bottom of a cable tie mount (Figure 4).
- 6) Press the mount with the epoxy firmly on the surface and twist the mount back and forth slightly.
- 7) The cable tie mount is ready for use after 15 minutes at room temperature.

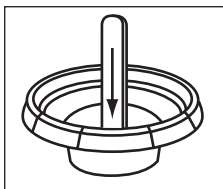


Figure 1

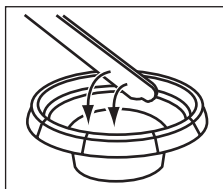


Figure 2

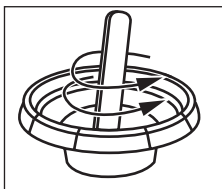


Figure 3

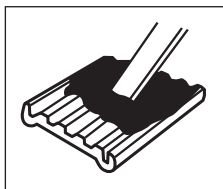


Figure 4

### WARNING

Skin and eye irritant  
Contains epoxy resins, amine and mercaptan hardeners

### PRECAUTIONS FOR USE

- 1) Use in well ventilated areas.
- 2) Avoid contact with skin and eyes. If contact occurs, wash skin with soap and water. Flush eyes with water. If irritation persists, see your physician.
- 3) Do not take internally. If accidentally swallowed, induce vomiting and call a physician.

### KEEP OUT OF REACH OF CHILDREN

### REFER TO SDS BEFORE USE

### NOTICE TO PURCHASER

The information contained in this package is based on our experience and is believed to be reliable. No warranty, expressed or implied, is made by Panduit Corp. with respect to adhesive bond performance. Among other things, the conditions under which the adhesive may be applied are beyond Panduit Corp. control. We recommend that each prospective user test his proposed application before repetitive use.

## X-ON Electronics

Largest Supplier of Electrical and Electronic Components

*Click to view similar products for [Cable Tie Mounts](#) category:*

*Click to view products by [Panduit](#) manufacturer:*

Other Similar products are found below :

[3-350087-0](#) [CTB75X75BKA-C](#) [561-EZAB580T](#) [561-EZS375B40](#) [561-TA250125](#) [08443-0](#) [10035-0](#) [561-TA00600](#) [1689174-1](#) [08445-0](#)  
[10351-0](#) [561-TA250125B](#) [20015-0](#) [10350-0](#) [10029-0](#) [08484-0](#) [08446-0](#) [08318-0](#) [PAM075NY-A-C](#) [MTH1-3](#) [10044](#) [151-01802](#) [151-11319](#)  
[151-11819](#) [PLWP1SB-D](#) [PLWP1M-C](#) [PLWP2SA-D](#) [PLWP2SB-D](#) [PLWP2S-C](#) [PLWP1S-D](#) [PLWP1M-D](#) [TA1S8-C](#) [ABM3H-A-L](#) [ABM3H-](#)  
[AT-T0](#) [EMS-A-C0](#) [EMSK3-1-3-0](#) [10079](#) [10030](#) [151-10930](#) [151-10920](#) [3590](#) [151-28320](#) [151-28349](#) [151-28530](#) [151-10914](#) [151-10904](#) [151-](#)  
[10915](#) [151-10916](#) [151-10906](#) [115-06960](#)