

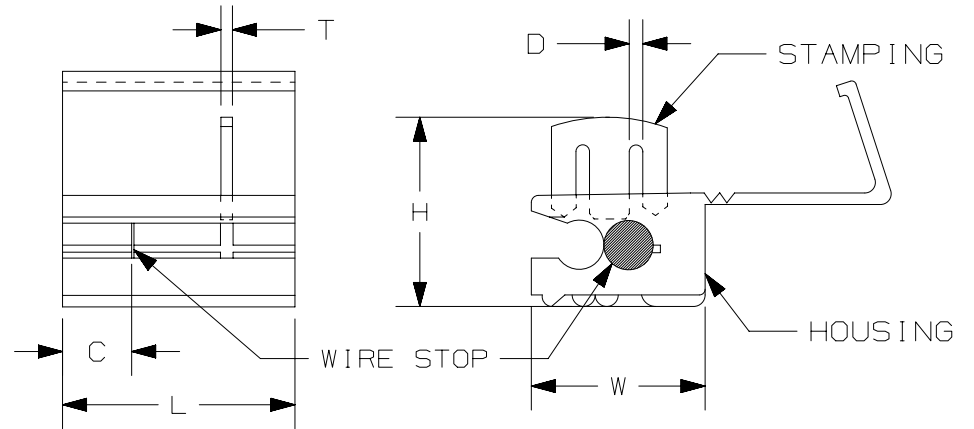
THIS COPY IS PROVIDED ON A RESTRICTED BASIS AND IS NOT TO BE USED IN ANY WAY DETRIMENTAL TO THE INTERESTS OF PANDUIT CORP.

PANDUIT PART #	WIRE RANGE AWG [mm ²]	HOUSING COLOR	DIMENSIONS in. [mm]					
			L ± .02 [0.6]	W ± .02 [0.6]	H ± .02 [0.6]	C ± .04 [1.1]	D ± .006 [0.15]	T ± .01 [0.3]
EQSP18	#22-18 [0.5-0.75]	RED	.79 [20.0]	.46 [11.8]	.48 [12.3]	.14 [3.5]	.017 [.43]	.031 [.8]
EQSP14*	#18-14 [0.75-2.5]	BLUE	.77 [19.6]	.47 [12.0]	.48 [12.3]	.14 [3.5]	.028 [.70]	.031 [.8]
EQSP10	#12-10 [4.0-6.0]	YELLOW	.81 [20.5]	.60 [15.2]	.66 [16.7]	.24 [6.0]	.047 [1.20]	.035 [.9]

*NOT UL LISTED

NOTES:

- USED FOR:
 - A. EQSP18 & EQSP14 SOLID AND STRANDED COPPER WIRE
 - B. EQSP10 STRANDED COPPER WIRE ONLY
 - C. 221°F [105°C] MAX. OPERATING TEMPERATURE
 - D. 600 V. MAX VOLTAGE RATING
- MATERIAL:
 - A. STAMPING: BRASS, TIN PLATED
 - B. HOUSING: POLYPROPYLENE
- SEE www.panduit.com FOR PACKAGE QUANTITIES
- DIMENSIONS IN BRACKETS ARE METRIC EQUIVALENT



LISTED
20U0
E52164

TITLE		STRONGHOLD QUICK SPLICE CONNECTOR INSULATION DISPLACEMENT, #22-10 AWG	
ITEM REVISION NAME		00123SSH/00	
DATASET FILE NAME		00123SSH/00	
UNLESS OTHERWISE SPECIFIED, DIMENSIONAL TOLERANCES ARE: IN [mm]		MATERIAL:	
.x ± .1 [2.54] .xxx ± .005 [.127]		SEE NOTES	
.xx ± .01 [.25] ANGLES ± 5°		DRAWING NUMBER:	
THIRD ANGLE PROJECTION		00123SSH-DC	
DRAWN BY	DATE	CHK	SCALE
JHNU	-	-	N.T.S.
REV	DATE	BY	CHK
00	2/18	JHNU	TMR
APR	DRAWING RELEASED		00123SS
DESCRIPTION	ECN		SIZE
SHT 1 OF 1		A	

D10100DA/15

X-ON Electronics

Largest Supplier of Electrical and Electronic Components

Click to view similar products for [Terminals](#) category:

Click to view products by [Panduit](#) manufacturer:

Other Similar products are found below :

[00-054007-01074-6](#) [00-054007-70206-1](#) [00-054007-70210-8](#) [00-054007-70217-7](#) [00-054007-70226-9](#) [00-054007-70228-3](#) [00-054007-70248-1](#) [00-054007-70256-6](#) [00-054007-70301-3](#) [00-054007-70316-7](#) [0-0320562-0](#) [00-054007-49560-4](#) [00-054007-70209-2](#) [00-054007-70225-2](#) [00-054007-70227-6](#) [00-054007-70231-3](#) [00-054007-70241-2](#) [00-054007-70242-9](#) [00-054007-70244-3](#) [00-054007-70246-7](#) [00-054007-70263-4](#) [00-054007-70288-7](#) [00-054007-70290-0](#) [00-054007-70300-6](#) [00-054007-70304-4](#) [01-2065-1-0216](#) [01-2900-1-04412](#) [00581P0075](#) [600TS-10](#) [60205-1](#) [604200-1](#) [605601-1](#) [60598-1-CUT-TAPE](#) [61314-6-C](#) [61810-3](#) [61-S](#) [61-SN](#) [626-0194](#) [62-NBM-A](#) [62-SN](#) [62-SP](#) [63-S](#) [640179-1](#) [M55155/059I03](#) [M55155/079C01](#) [M55155/099H02](#) [M55155/109H01](#) [M55155/109H02](#) [M55155/12XH05](#) [M55155/16XH02](#)