

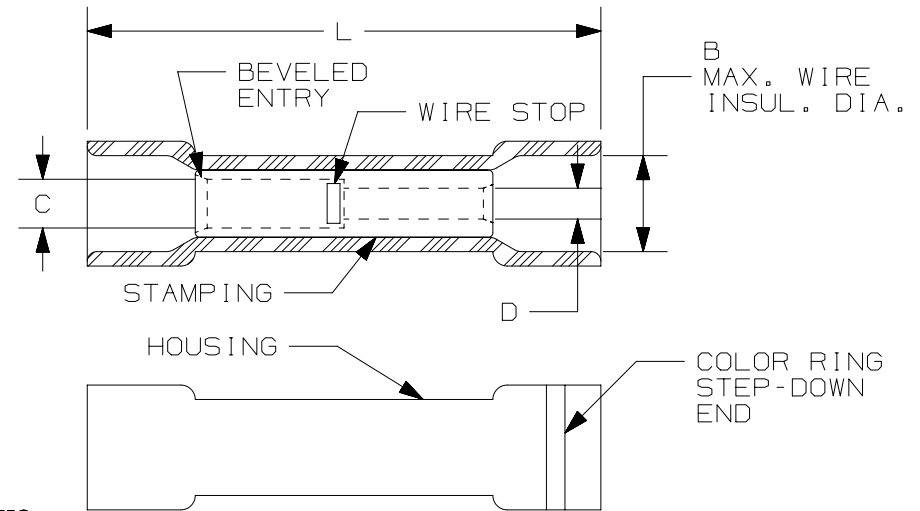
THIS COPY IS PROVIDED ON A RESTRICTED BASIS AND IS NOT TO BE USED IN ANY WAY DETRIMENTAL TO THE INTERESTS OF PANDUIT CORP.

PANDUIT PART #	WIRE SIZE AWG [mm <sup>2</sup> ]		HOUSING COLOR	COLOR RING STEP-DOWN END	DIMENSIONS in. [mm]				WIRE STRIP LENGTH in [mm] +1/32 [0,8] -0	TOOLS	TOOL POCKET
	STANDARD END	STEP-DOWN END			L ± .04 [1.1]	C ± .01 [0.3]	D ± .01 [0.3]	B			
ESV14-ESV18	#16-14 [1,5-2,5]	#22-18 [0,5-0,75]	BLUE	RED	.96 [24.5]	.09 [2.3]	.07 [1.7]	.165 [4.2]	9/32 [6,8]	KST2000A	BLUE #16-14
ESV10-ESV18	#12-10 [4,0-6,0]	#22-18 [0,5-0,75]	YELLOW	RED	1.22 [31.0]	.13 [3.4]	.07 [1.7]	.236 [6.0]			YELLOW #12-10
ESV10-ESV14	#12-10 [4,0-6,0]	#16-14 [1,5-2,5]	YELLOW	BLUE	1.22 [31.0]	.13 [3.4]	.09 [2.3]	.236 [6.0]			YELLOW #12-10
ESV8-ESV14*	#8 [8,0]	#16-14 [1,5-2,5]	RED	BLUE	1.41 [35.7]	.18 [4.5]	.09 [2.3]	.322 [8.2]	3/8 [9,6]	KST-HDC38A	#8 [8,0]
ESV8-ESV10*	#8 [8,0]	#12-10 [4,0-6,0]	RED	YELLOW	1.41 [35.7]	.18 [4.5]	.13 [3.4]	.322 [8.2]			#8 [8,0]
ESV6-ESV8	#6 [14,0]	#8 [8,0]	BLUE	RED	1.77 [45.0]	.23 [5.9]	.18 [4.5]	.401 [10.2]	15/32 [12,0]		#6 [14,0]

\*NOT UL LISTED

NOTES:

- USED FOR:
  - A. STRANDED COPPER WIRE ONLY
  - B. 167°F [75°C] MAX. OPERATING TEMPERATURE
  - C. 600V MAX VOLTAGE RATING
- MATERIAL:
  - A. STAMPING: COPPER TUBE, TIN PLATED
  - B. HOUSING: VINYL
- SEE WWW.PANDUIT FOR PACKAGE QUANTITIES
- DIMENSIONS IN BRACKETS ARE METRIC EQUIVALENT



LISTED  
2000  
E52164

TITLE		STRONGHOLD STEP-DOWN BUTT SPLICES VINYL INSULATED, #22-6 AWG		
CUSTOMER DRAWING				
ITEM REVISION NAME	00123SSD/00			
DATASET FILE NAME	00123SSD_DC/00			
UNLESS OTHERWISE SPECIFIED, DIMENSIONAL TOLERANCES ARE: IN [mm]		MATERIAL:		
.x ± .1 [2.54] .xx ± .01 [2.5]		.xxx ± .005 [0.127] ANGLES ± 5°		
DRAWING NUMBER:		00123SSD-DC		
DRAWN BY	DATE	CHK	SCALE	SIZE
JHNU	-	-	N.T.S.	A

REV	DATE	BY	CHK	APR	DESCRIPTION	ECN
00	2/18	JHNU	TMR	RGB	DRAWING RELEASED	00123SS

D10100DA/15

## X-ON Electronics

Largest Supplier of Electrical and Electronic Components

*Click to view similar products for [Terminals](#) category:*

*Click to view products by [Panduit](#) manufacturer:*

Other Similar products are found below :

[00-054007-01074-6](#) [00-054007-70206-1](#) [00-054007-70210-8](#) [00-054007-70217-7](#) [00-054007-70226-9](#) [00-054007-70228-3](#) [00-054007-70248-1](#) [00-054007-70256-6](#) [00-054007-70301-3](#) [00-054007-70316-7](#) [0-0320562-0](#) [00-054007-49560-4](#) [00-054007-70209-2](#) [00-054007-70225-2](#) [00-054007-70227-6](#) [00-054007-70231-3](#) [00-054007-70241-2](#) [00-054007-70242-9](#) [00-054007-70244-3](#) [00-054007-70246-7](#) [00-054007-70263-4](#) [00-054007-70288-7](#) [00-054007-70290-0](#) [00-054007-70300-6](#) [00-054007-70304-4](#) [01-2065-1-0216](#) [01-2900-1-04412](#) [00581P0075](#) [600TS-10](#) [60205-1](#) [604200-1](#) [605601-1](#) [60598-1-CUT-TAPE](#) [61314-6-C](#) [61810-3](#) [61-S](#) [61-SN](#) [626-0194](#) [62-NBM-A](#) [62-SN](#) [62-SP](#) [63-S](#) [640179-1](#) [M55155/059I03](#) [M55155/079C01](#) [M55155/099H02](#) [M55155/109H01](#) [M55155/109H02](#) [M55155/12XH05](#) [M55155/16XH02](#)