

LC Opticom® Fiber Adapter Panels (FAPs)

- Loaded with TIA/EIA-604 FOCIS-10 compatible adapters
- Exceed TIA/EIA-568-B.3 requirements
- Adapter housing colors follow TIA/EIA-568-C.3 suggested color identification scheme
- Snap quickly into the front of all Opticom® components
- LC fiber adapter panels are Sr./Jr. to conserve enclosure space
- Accept FOCIS-10 compatible senior LC connectors at either end and FOCIS-10 junior LC connectors at the inside end for behind the wall applications
- Both ends accept FOCIS-10 compatible senior LC connectors
- Junior end also accepts FOCIS-10 compatible junior (fixed ferrule/springless) LC connectors
- Choice of phosphor bronze or zirconia ceramic split sleeves to fit specific network requirements; zirconia ceramic split sleeves are recommended for OM3/OM4 multimode and OS1/OS2 singlemode applications
- Every adapter is laser marked with Q.C. number to assure 100% traceability
- LC adapters are also available in QuickNet™ Fiber Optic Cassettes on pages C.44 – C.48, Mini-Com® Modules on page C.33, or separately on pages C.28 – C.29 to provide a complete LC system solution



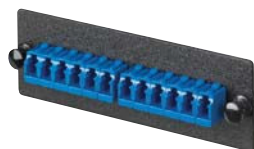
FAP12WAQDLCZ



FAP8WBLDLC



FAP6WEIDLC



FAP12WBULCZ

Part Number	Part Description	Std. Pkg. Qty.	Std. Ctn. Qty.
LC Fiber Adapter Panels – 10Gig™ OM3/OM4 50/125µm (Aqua Adapters)			
FAP6WAQDLCZ	LC 10Gig™ FAP loaded with six LC 10Gig™ Duplex Multimode Fiber Optic Adapters (Aqua) with zirconia ceramic split sleeves.	1	10
FAP6WAQDLC	LC 10Gig™ FAP loaded with six LC 10Gig™ Duplex Multimode Fiber Optic Adapters (Aqua) with phosphor bronze split sleeves.	1	10
FAP8WAQDLCZ	LC 10Gig™ FAP loaded with eight LC 10Gig™ Duplex Multimode Fiber Optic Adapters (Aqua) with zirconia ceramic split sleeves.	1	10
FAP8WAQDLC	LC 10Gig™ FAP loaded with eight LC 10Gig™ Duplex Multimode Fiber Optic Adapters (Aqua) with phosphor bronze split sleeves.	1	10
FAP12WAQDLCZ	LC 10Gig™ FAP loaded with twelve LC 10Gig™ Duplex Multimode Fiber Optic Adapters (Aqua) with zirconia ceramic split sleeves.	1	10
FAP12WAQDLC	LC 10Gig™ FAP loaded with twelve LC 10Gig™ Duplex Multimode Fiber Optic Adapters (Aqua) with phosphor bronze split sleeves.	1	10
LC Fiber Adapter Panels – OM2 50/125µm (Black Adapters)			
FAP6WBLDLC	LC FAP loaded with six LC duplex multimode fiber optic adapters (Black) with phosphor bronze split sleeves.	1	10
FAP8WBLDLC	LC FAP loaded with eight LC duplex multimode fiber optic adapters (Black) with phosphor bronze split sleeves.	1	10
FAP12WBLDLC	LC FAP loaded with twelve LC duplex multimode fiber optic adapters (Black) with phosphor bronze split sleeves.	1	10
LC Fiber Adapter Panels – OM1 62.5/125µm (Electric Ivory Adapters)			
FAP6WEIDLC	LC FAP loaded with six LC duplex multimode fiber optic adapters (Electric Ivory) with phosphor bronze split sleeves.	1	10
FAP8WEIDLC	LC FAP loaded with eight LC duplex multimode fiber optic adapters (Electric Ivory) with phosphor bronze split sleeves.	1	10
FAP12WEIDLC	LC FAP loaded with twelve LC duplex multimode fiber optic adapters (Electric Ivory) with phosphor bronze split sleeves.	1	10
LC Fiber Adapter Panels – OS1/OS2 9/125µm (Blue Adapters)			
FAP12WBULCZ	LC FAP loaded with twelve LC simplex singlemode fiber optic adapters (Blue) with zirconia ceramic split sleeves.	1	10
FAP6WBUDLCZ	LC FAP loaded with six LC duplex singlemode fiber optic adapters (Blue) with zirconia ceramic split sleeves.	1	10
FAP8WBUDLCZ	LC FAP loaded with eight LC duplex singlemode fiber optic adapters (Blue) with zirconia ceramic split sleeves.	1	10
FAP12WBUDLCZ	LC FAP loaded with twelve LC duplex singlemode fiber optic adapters (Blue) with zirconia ceramic split sleeves.	1	10

X-ON Electronics

Largest Supplier of Electrical and Electronic Components

Click to view similar products for [Fiber Optic Connectors](#) category:

Click to view products by [Panduit](#) manufacturer:

Other Similar products are found below :

[0004700001](#) [6100-R](#) [6313](#) [F709034706](#) [F709722200](#) [F709730000](#) [F718183204](#) [F727403500](#) [F727752800](#) [FCXO-12-3BY](#) [FO-SCREW\(M2X6\)](#) [9440F20-27S-190](#) [944-120-6001](#) [944-125-6003](#) [9441F10SL-3P](#) [953-101-5310-P](#) [954-101-57202B](#) [A0270169](#) [12-9122](#) [12-5702](#) [143025NC](#) [DSAKB](#) [AX101713](#) [AX102420](#) [AX103923](#) [AX104193](#) [AX104230](#) [AX104562](#) [AX104683](#) [AX105203-B25](#) [AX105205-S1](#) [EHSC2M](#) [17-300800](#) [180-044NF06-11-2S](#) [180-044NF06-17-8P](#) [180-044NF07-11-2S](#) [181-011-126](#) [181-011-S](#) [181-057-126](#) [BT34IW](#) [HRFCP-HSCJ-1\(61\)](#) [HRFC-R2\(40\)](#) [NKSOPBUY](#) [20500002116](#) [2064996-1](#) [20800001065](#) [2170](#) [9132](#) [2612](#) [2620](#)