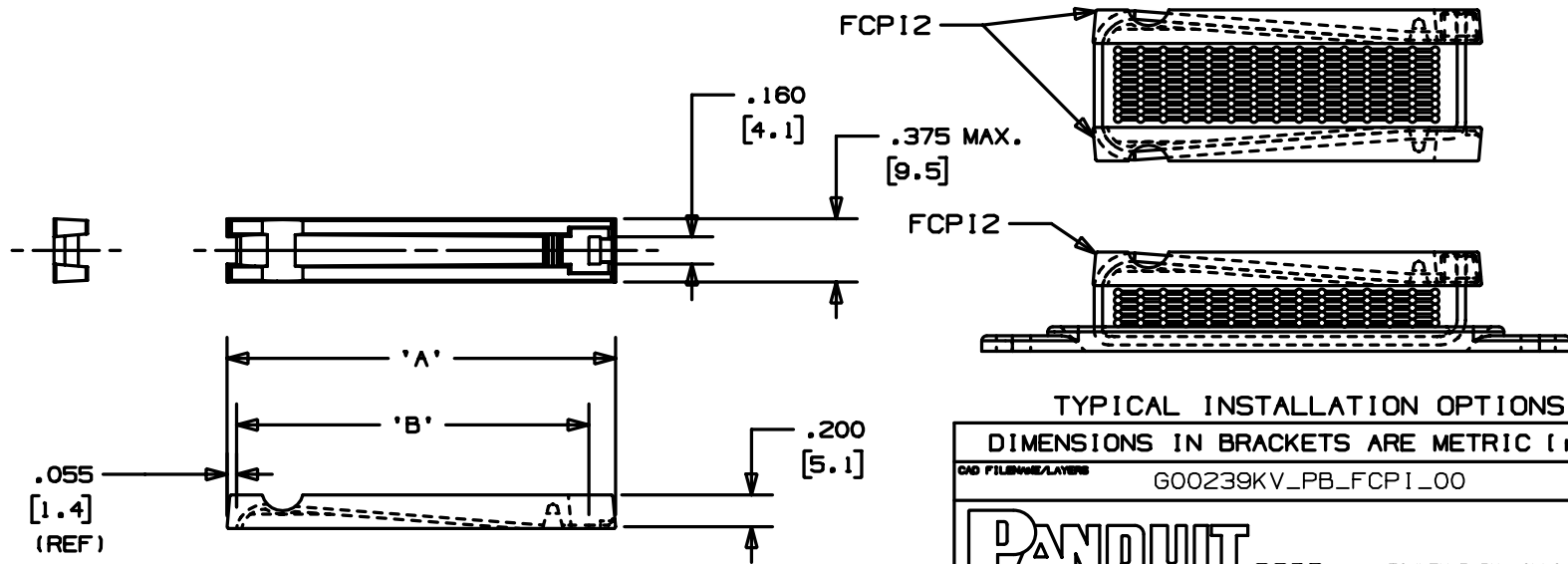


THIS COPY IS PROVIDED ON A RESTRICTED BASIS AND IS NOT TO BE USED IN ANY WAY DETRIMENTAL TO THE INTERESTS OF PANDUIT CORP.

PANDUIT PART NO. *	'A' MAX.	'B' MIN.	STACKING HEIGHT 'H' WHEN USED WITH INTERMEDIATE STRAP				WEIGHT lbs / 100 (g) / pcs.
			PLT1.5I	PLT2I	PLT3I	PLT4I	
FCPI1	1.29 (32.8)	1.04 (26.4)	0.8 (20.3)	2.0 (50.8)	3.7 (94)	5.2 (132.1)	.18 (81.7)
FCPI2	2.31 (58.7)	2.04 (51.8)	-----	1.0 (25.4)	2.7 (68.6)	4.2 (106.7)	.34 (154.4)
FCPI3	3.32 (84.3)	3.04 (77.2)	-----	-----	1.7 (43.2)	3.2 (81.3)	.52 (236.1)



NOTES

1. SEE CURRENT PRICE SHEET FOR PART NUMBER SUFFIX DESIGNATION FOR PACKAGE SIZE.
2. FCPI2 CAN BE USED WITH BASE FCBI2, SEE PANDUIT DRAWING GB0239HY

TYPICAL INSTALLATION OPTIONS

DIMENSIONS IN BRACKETS ARE METRIC [mm]	
CAD FILENAME/LAYERS G00239KV_PB_FCPI_00	
PANDUIT CORP. TINLEY PARK, ILLINOIS	
FLAT CABLE MOUNT PLATE (FCPI_)	
UNLESS OTHERWISE SPECIFIED, DIMENSIONAL TOLERANCES ARE: (.X) ±0.05 (1.3) (.XXX) ±0.010 (0.25) (.XX) ±0.02 (0.5) ANGLES ± 5°	UNLESS OTHERWISE SPECIFIED, ALL DIMENSIONS ARE GIVEN IN INCHES, THIRD ANGLE PROJECTION.
DRAWN BY JAD	MAT'L: NYLON 6/6 COLOR: BLACK
DATE 9/23/03	SCALE NONE
DRW'D	DWG NO. GB0239KV Dwg SIZE A

REV	DATE	BY	CHK	DESCRIPTION	ECN - R	CUST	SUP
R	9/23/03	JAD		INITIAL RELEASE, REPLACES SS-05548	GB0239KV	R	

X-ON Electronics

Largest Supplier of Electrical and Electronic Components

Click to view similar products for [Cable Mounting & Accessories](#) category:

Click to view products by [Panduit](#) manufacturer:

Other Similar products are found below :

[582603-1](#) [009333-000](#) [727844N003](#) [747](#) [809090N001](#) [843188-000](#) [8666](#) [967279N002](#) [DB-11](#) [1300840039](#) [1300900096](#) [1301800416](#)
[1302264450](#) [1300830184](#) [1300830729](#) [1300900039](#) [1301580036](#) [1301850553](#) [1301860939](#) [1302000074](#) [1302261315](#) [1302264431](#)
[1337706-2](#) [APA18-AK](#) [1724](#) [1-787307-1](#) [185491N001](#) [1868](#) [HP-6N](#) [C-202-C](#) [202C221-13-0](#) [CA7308-000](#) [8S23-75FR-CS8184](#) [2684](#) [9648](#)
[3089](#) [988382-000](#) [A72821-000](#) [AA401](#) [173506-000](#) [1823](#) [202C292-13-0](#) [202C302-13-0](#) [2109](#) [300625](#) [3330](#) [3412](#) [356247-1](#) [M9142](#)
[M9143](#)