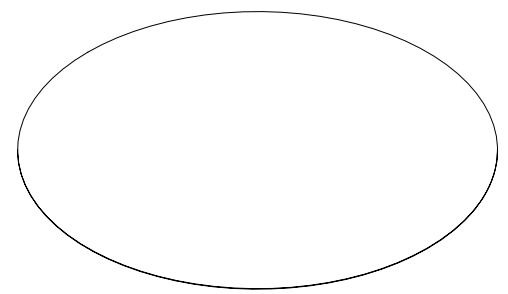
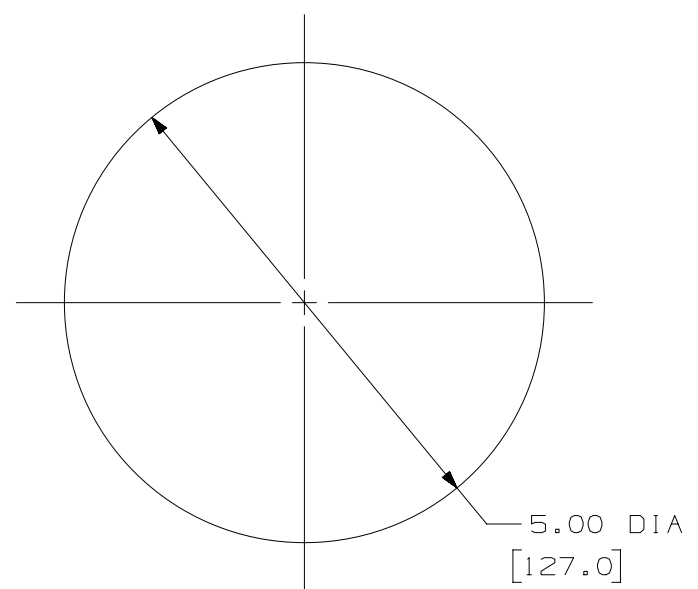


THIS COPY IS PROVIDED ON A RESTRICTED BASIS AND IS NOT TO BE USED IN ANY WAY DETRIMENTAL TO THE INTERESTS OF PANDUIT CORP.

PANDUIT PART NUMBER	WEIGHT
FLCFPLF - X	0.04 LB./PACKAGE 18.0 GRAMS/PACKAGE

NOTES:

1. SEE CURRENT CATALOG FOR ADDITIONAL PART NUMBER SUFFIXES TO INDICATE PACKAGE QUANTITIES.
2. STANDARD PACKAGE QUANTITY: 10 SHEETS PER PACKAGE
3. PROPER USE OF THIS FILM WILL PROVIDE THE REQUIRED END FACE POLISH FOR SINGLEMODE TYPE CONNECTORS.
4. POLISHING FILM CONSISTS OF A LAPPING MEDIA BONDED TO A MYLAR BACKING.
5. ALL DIMENSIONS IN [ ] ARE METRIC.



PART NUMBER		FLCFPLF - X	
TITLE			
FINAL POLISH LAPPING FILM		CUSTOMER DRAWING	
ITEM REVISION NAME		M01575BD/00	
DATASET FILE NAME		M01575BD_DC/00E	
UNLESS OTHERWISE SPECIFIED, DIMENSIONAL TOLERANCES ARE: IN ( mm )		MATERIAL:	
.X ±		.XXX ±	
.XX ±		ANGLES ±	
		DRAWING NUMBER:	
THIRD ANGLE PROJECTION		01575-05	
DRAWN BY	DATE	CHK	SCALE
EFK	10-21-03	RTFI	NONE
SHT 1 OF 1			SIZE
			A

4	5/19/15	JSP	WJM	RWB	A. REVISED DRAWING TITLE BLOCK.	01575-05
REV	DATE	BY	CHK	APR	DESCRIPTION	ECN

D10100DA/14

## X-ON Electronics

Largest Supplier of Electrical and Electronic Components

*Click to view similar products for [Other Tools](#) category:*

*Click to view products by [Panduit](#) manufacturer:*

Other Similar products are found below :

[CR-0AFL4--332K](#) [568681-1](#) [5800-0090](#) [58061-1](#) [59065-5](#) [59085](#) [00-8273-RDPP](#) [00-8729-WHPP](#) [593033](#) [593072](#) [593564100](#) [593575](#)  
[593593](#) [011349-000](#) [CRCW08052740FRT1](#) [LUC-012S070DSM](#) [LUC-018S070DSP](#) [LUC-024S105DSP](#) [599-2021-3-NME](#) [599-JJ-2021-03](#)  
[00-5080-YWPP](#) [00-9089-RDPP](#) [00-9300-RDPP](#) [CRCW2010331JR02](#) [601-JJ-06](#) [601-SPB](#) [601YSY](#) [602-JJ-03](#) [602SPB](#) [603-JJ-07-FP](#) [603-](#)  
[JJY-04](#) [M15570-25](#) [CRTN1013](#) [CS16](#) [6-1579014-0](#) [CSB3](#) [6203](#) [62200-5709](#) [6240-1](#) [M43435](#) [TY 2](#) [SZ 3](#) [FIN B](#) [BLK](#) [M-5Z](#) [M6816](#) [M7298](#)  
[M7456](#) [M7976](#) [660-29ABT1](#) [662508-1](#) [CVHD-950X-93.333](#) [CW104-01X](#) [671-GP-04-KT39-73207](#)