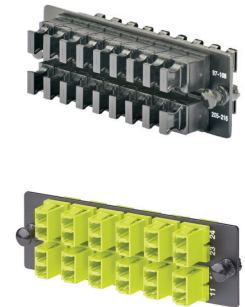


Opticom™ OM5 Signature Core™ Fiber Adapter Panels (FAPs)

specifications

Fiber adapter panels contain TIA/EIA-604 FOCIS compliant or compatible simplex or duplex fiber optic adapters and meet or exceed TIA/EIA-568-D.3 requirements. Fiber adapter panels include vertical MPO adapters and LC fiber optic adapters. Fiber optic adapters include zirconia ceramic split sleeves to fit specific network requirements. LC adapter housing colors follow the TIA/EIA-568-D.3 suggested color identification scheme. Multimedia modular panels allow customization of installation for applications requiring integration of fiber optic and copper cables. Blank fiber adapter panels reserve fiber adapter panel space for future use. Opticom™ Fiber Adapter Panels snap quickly into the front of fiber optic patch panels and enclosures for easy network deployment or moves, adds, and changes. QuickNet™ SFQ fiber adapter panels are mounted from the rear while HD Flex fiber adapter panels can be mounted from the rear as well as from the front of the panels and enclosures for more dense installation and easy network deployment or moves, adds and changes.



technical information

| | |
|-------------------------------|---|
| Standard requirements: | All adapters meet or exceed TIA/EIA-568-D.3 requirements MPO: TIA/EIA-604 FOCIS-5 compliant LC: TIA/EIA-604 FOCIS-10 compatible |
| Split sleeve material: | Zirconia ceramic: 10 – 25Gig™ OM5/OM5 Signature Core™ multimode adapters |
| Insertion loss: | Supports the performance of connectors/patch cords |
| Return loss: | Supports singlemode (SPC and UPC) and multimode (PC) connector polish performance |

key features and benefits

| | |
|---|--|
| Snap quickly into Opticom™ Fiber Adapter Patch Panels and Enclosures | Assures flexibility and ease of network deployment and moves, adds and changes |
| Snap quickly into QuickNet™ Patch Panels MPO Fiber Optic Adapters | Allows system design of efficient structured cabling systems in support of 100 Gb/s Ethernet Interconnects (IEEE 802.3ba Clause 86) and 10x10 Gb/s Ethernet Interconnects (802.3ae Clause 52) for Data Aggregation and Super High Density Cabling that service Datacom/Telecom Switch and Router Connections |
| LC adapter housing colors follow TIA/EIA-568-D.3 suggested identification color scheme | Easy identification of fiber type via adapter colors; visually compatible with patch cords and connectivity that also follows the color identification scheme |
| Mounted HD Flex™ Fiber Optic Adapters from the rear or the front of HD Flex™ Panels and Enclosures | T568A and T568B wiring scheme clearly identified on universal label |

applications

Opticom™ Fiber Optic Adapter Panels (FAPs) are used with Opticom™ Rack and Wall Mount Enclosures, Fiber Adapter Patch Panels, to deploy medium to high-density fiber optic network applications as specified in the data center cabling standard TIA 942 for cross connects in main distribution, horizontal distribution, and equipment distribution areas. Opticom™ Fiber Adapter Panels snap quickly into the patch panels and enclosures for easy network deployment or moves, adds, and changes. Blank fiber adapter panels reserve panel space for future use.

HD Flex™ Fiber Optic Adapter Panels (FAPs) are used with HD Flex™ Panels and Enclosures. This allows system designers to tailor configuration, reach and breakout construction to application requirements; to minimize waste, optimize cable management, speed deployment, and improve flexibility and manageability for lower installation costs.

QuickNet™ Fiber Optic Adapter Panels (FAPs) are appropriate in a structured cabling systems in environment that service datacom/telecom switch and router connections.

Opticom™ OM5 Signature Core™ Fiber Adapter Panels (FAPs)

LC Opticom™ Fiber Adapter Panels (Duplex Adapters)

| Fiber Type | Adapter Color | Split Sleeve(s) | 6 Adapters | 12 Adapters |
|----------------------------|---------------|------------------|-------------|--------------|
| OM5/OM5 Signature Core™ | Lime Green | Zirconia Ceramic | FAP6WWDL CZ | FAP12WWDL CZ |

QuickNet™ MPO Fiber Adapter Panels (FAPs)

| | |
|--|----------|
| QuickNet™ 100G MPO Fiber Adapter Panels (FAPs) | FQMAP65W |
|--|----------|

HD Flex™ MPO Fiber Adapter Panels (FAPs)

| | |
|---|-------------|
| 6 MPO Type A Adapters (Key-Up to Key-Down) in Black | FHMPW-6-ABL |
| 6 MPO Type B Adapters (Key-Up to Key-Up) in Charcoal Gray | FHMPW-6-BCG |

WORLDWIDE SUBSIDIARIES AND SALES OFFICES

PANDUIT US/CANADA
Phone: 800.777.3300

PANDUIT EUROPE LTD.
London, UK
cs-emea@panduit.com
Phone: 44.20.8601.7200

PANDUIT SINGAPORE PTE. LTD.
Republic of Singapore
cs-ap@panduit.com
Phone: 65.6305.7575

PANDUIT JAPAN
Tokyo, Japan
cs-japan@panduit.com
Phone: 81.3.6863.6000

PANDUIT LATIN AMERICA
Guadalajara, Mexico
cs-la@panduit.com
Phone: 52.33.3777.6000

PANDUIT AUSTRALIA PTY. LTD.
Victoria, Australia
cs-aus@panduit.com
Phone: 61.3.9794.9020

For a copy of Panduit product warranties, log on to www.panduit.com/warranty

For more information

Visit us at www.panduit.com

Contact Customer Service by email: cs@panduit.com
or by phone: 800.777.3300



©2017 Panduit Corp.
ALL RIGHTS RESERVED.
FBSP140--SA-ENG
12/2017

X-ON Electronics

Largest Supplier of Electrical and Electronic Components

Click to view similar products for [Fibre Optic Connectors](#) category:

Click to view products by [Panduit](#) manufacturer:

Other Similar products are found below :

[F718092216](#) [AX104024](#) [AX100068](#) [AX103256](#) [501048-1](#) [E39R37](#) [181-048-16](#) [60926](#) [98039-003LF](#) [A0407006](#) [60923](#) [60921](#) [906-122-5047](#) [2102321-1](#) [F81ELBNNNSNM003](#) [F81ELBNNNSNM005](#) [F81ELBNNNSNM010](#) [FAP6WWDLCZ](#) [FHMPW-6-ABL](#) [FHMPW-6-BCG](#) [FQMAP65W](#) [FHC39N-08-10A](#) [FHC3XO-08-10A](#) [FHC3XO-08-10B](#) [FHC3ZO-08-10A](#) [FHC3ZO-08-10B](#) [FHC3ZA-08-10A](#) [FHC3ZA-08-10B](#) [FC2WA-12-10AS](#) [FHCXO-20F-10A](#) [FHCXO-24F-10A](#) [FC39N-16-10A](#) [FLCS2/9SOCA9AG](#) [FLCS2/9SOCPXAQ](#) [FLCS2/9SOCU9BU](#) [FSCS2/9SOCA9AG](#) [FSCS2/9SOCPXAQ](#) [FSCS2/9SOCU9BU](#) [FC29N-12-10U](#) [LXCRN1C1CL1N](#) [9446W14S-6S](#) [9442W14S-5S](#) [F780904000](#) [944-1023](#) [1534631-1](#) [181-035-1000](#) [20100014231](#) [F718111220](#) [F718190204](#) [17-300940](#)