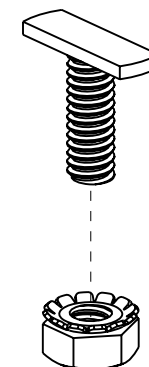
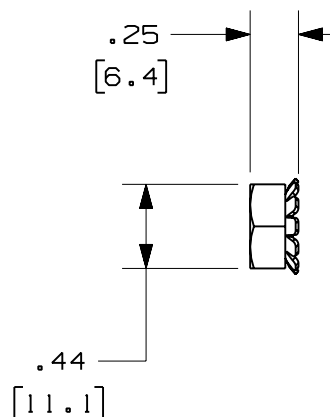


|                        |                                |
|------------------------|--------------------------------|
| PANDUIT<br>PART NUMBER | WEIGHT                         |
| FRTBKT-X               | 0.17 LB/10 PCS<br>(80g/10 PCS) |



**NOTES:**

1. SEE CURRENT CATALOG FOR ADDITIONAL PART SUFFIXES TO INDICATE PACKAGE QUANTITY.
2. THE FIBERRUNNER 4x4, 6x4 AND 12x4 T-BOLT KIT INCLUDES:  
TEN (10) 1/4-20 T-BOLTS,  
TEN (10) 1/4-20 HEX KEPS NUTS.
3. FINISH COLOR: CLEAR ZINC PLATE.
4. DIMENSIONS IN PARENTHESES ARE IN METRIC.



ENG. REF.: D38241BF\_DC\_FRTBKT-X\_02.prt

CAD FILENAME/LAYERS

FRTBKT-X.pdf

**PANDUIT** CORP TINLEY PARK, ILLINOIS  
**FIBERRUNNER 4x4, 6x4 AND 12x4**  
**T-BOLT KIT (FRTBKT-X)**  
 CUSTOMER DRAWING

UNLESS OTHERWISE SPECIFIED,  
 DIMENSIONAL TOLERANCES ARE:  
 (.X) ± (.XXX) ±  
 (.XX) ± .03 (.8) ANGLES ±

UNLESS OTHERWISE SPECIFIED,  
 ALL DIMENSIONS ARE GIVEN IN  
 INCHES, THIRD ANGLE PROJECTION.

DRAWN BY JHNU

MAT'L:

DATE 11-7-01

STEEL

SCALE NONE

DRAWING NO. 38241-05

DWG  
A  
SIZE

| REV | DATE     | BY  | CHK | DESCRIPTION  | ECN      | R  | CUST | SUP | GMBH |
|-----|----------|-----|-----|--|----------|----|------|-----|------|
| -   | -----    | --- | --  | G. REVISED GENERAL NOTES.                            | -----    | -- | --   |     |      |
| -   | -----    | --- | --  | F. REVISED PART WEIGHT.<br>E. REVISED DRAWING TITLE. | -----    | -- | --   |     |      |
| 3   | 12-29-06 | MSO | RN  | D. REVISED CAD FILENAME.<br>C. REVISED AND REDRAWN.  | 38241-05 | RN | RN   |     |      |

## X-ON Electronics

Largest Supplier of Electrical and Electronic Components

*Click to view similar products for [Screws & Fasteners](#) category:*

*Click to view products by [Panduit](#) manufacturer:*

Other Similar products are found below :

[5721-1440-1/4-SS](#) [593503FX](#) [0098.0094](#) [0098.9206](#) [0098.9219](#) [0098.9262](#) [596-2114-013](#) [59781-6](#) [0098.0026](#) [0098.9210](#) [0098.9212](#) [60227-01](#) [60227-04](#) [60227-08](#) [60687-01](#) [LOCK WASHER Black](#) [62153-11](#) [M316-KSSTMCZ100](#) [M3440-SS](#) [M3442-SS](#) [M3448-SS](#) [6292-1](#) [6-306105-9](#) [6-306131-4](#) [690432-1](#) [699161-000](#) [7230-3](#) [7244](#) [7248-1](#) [7248-2](#) [745564-1](#) [F1209](#) [751-00001](#) [7680](#) [809704-1](#) [8700](#) [8860220](#) [9047](#) [9521](#) [992326-6](#) [992763-3](#) [1-18024-0](#) [1-18028-2](#) [A168P1](#) [A495P1](#) [1-24921-1](#) [125416-1](#) [1260](#) [13-0036](#) [1301810148](#) [1301810313](#)