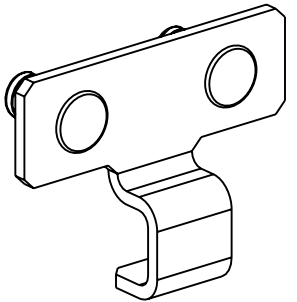
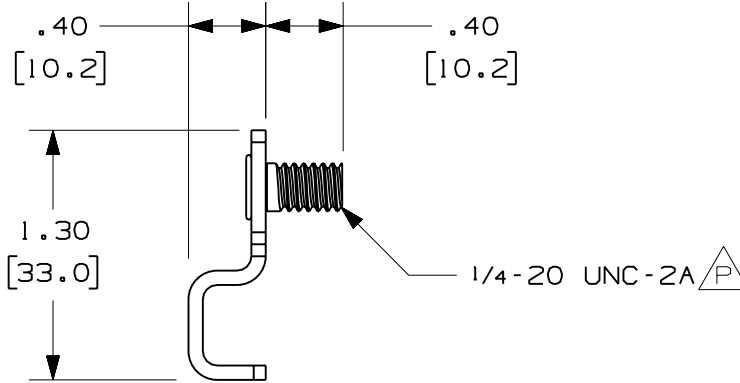
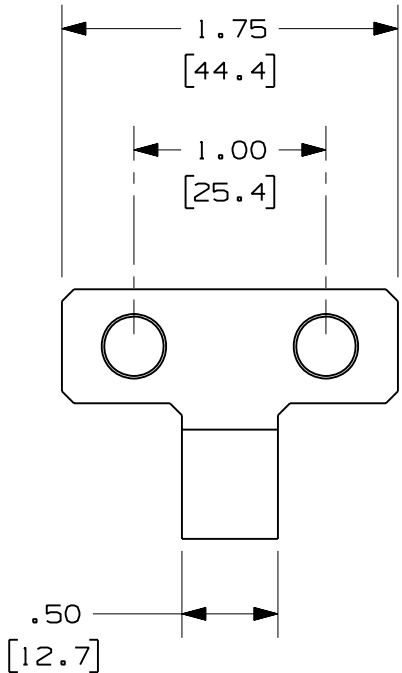


PANDUIT PART NUMBER	WEIGHT
FRUIB-X	0.55 LB/10 PCS (249g/10 PCS)



NOTES:

1. SEE CURRENT CATALOG FOR ADDITIONAL PART SUFFIXES TO INDICATE PACKAGE QUANTITY.
2. THE FIBER ROUTING UNIVERSAL INNERDUCT BRACKET ALLOWS FOR INNERDUCT OR CORRUGATED LOOM TUBING TO BE MOUNTED TO ANY FLAT SURFACE.
3. THE FIBER ROUTING UNIVERSAL INNERDUCT BRACKET KIT INCLUDES:
ONE (1) UNIVERSAL INNERDUCT BRACKET,
TWO (2) 1/4-20 HEX KEPS NUTS.
4. DIMENSIONS IN PARENTHESES ARE IN METRIC.



ENG. REF.: D37363CK_DC_FRUIB_03.prt

CAD FILENAME/LAYERS
FRUIB-X.pdf

REV	DATE	BY	CHK	DESCRIPTION	ECN	R	CUST	SUP	GMBH
-	-----	---	--	P. ADDED LOCAL NOTE	-----	--	---		
3	7-25-06	DTP	RN	O. REVISED PART WEIGHT N. REVISED AND REDRAWN	37363-24	RN	RN		

<h1>PANDUIT</h1> CORP TINLEY PARK, ILLINOIS		FIBER ROUTING UNIVERSAL INNERDUCT BRACKET (FRUIB-X) CUSTOMER DRAWING	
		UNLESS OTHERWISE SPECIFIED, DIMENSIONAL TOLERANCES ARE: (.X) ± (.XXX) ± (.XX) ± .03 (.8) ANGLES ±	UNLESS OTHERWISE SPECIFIED, ALL DIMENSIONS ARE GIVEN IN INCHES, THIRD ANGLE PROJECTION.
DRAWN BY JHNU	MAT'L: STEEL	SCALE NONE	DRAWING NO. 37363-24
DATE 6-22-00	CHECK'D JAWA	SIZE A	

X-ON Electronics

Largest Supplier of Electrical and Electronic Components

Click to view similar products for [Racks & Rack Cabinet Accessories](#) category:

Click to view products by [Panduit](#) manufacturer:

Other Similar products are found below :

[M00-PLN](#) [F2424](#) [8351-832-A-24](#) [9104](#) [9105](#) [PLFF2000](#) [H-9163-B](#) [1427C3](#) [HTS10](#) [PC-79](#) [SC10-3A](#) [SC4-28](#) [CG3-340S/12](#) [CP-001BK](#)
[M6123-4007-SS](#) [AX61400TB](#) [TS170](#) [LP40](#) [5261304-07](#) [CG3-160G](#) [7112C-PLN](#) [ALUM](#) [CM10](#) [8610-3124-S-26](#) [TS81](#) [7142](#) [GP134](#)
[M6125-4007-A-24](#) [M6127-4007-SS](#) [PBCOVER](#) [512](#) [AEG-4000G](#) [AEG-3000G](#) [HD99](#) [SR2-66A2](#) [FP10B4HP-1](#) [FP52-2](#) [1406-1006-01](#)
[29478](#) [TS2535](#) [TS169-6](#) [CAC2](#) [HA19-3U](#) [BR-19-10-1](#) [TS180](#) [CG3-ESD](#) [SC11-1](#) [CFS-1.00/2.20](#) [AX6145WM](#) [HEC0800PB](#) [ZC633R](#)