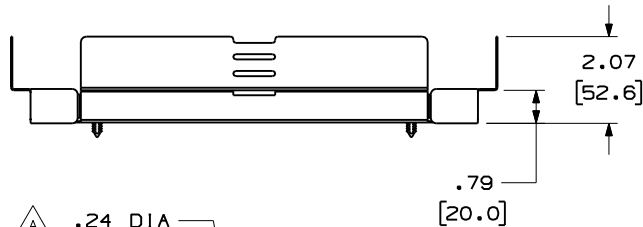
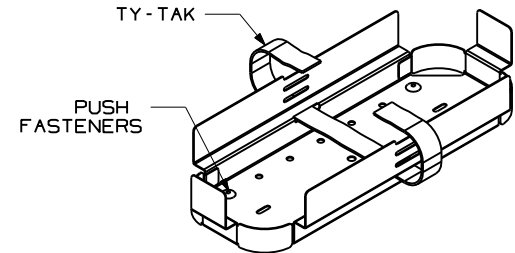
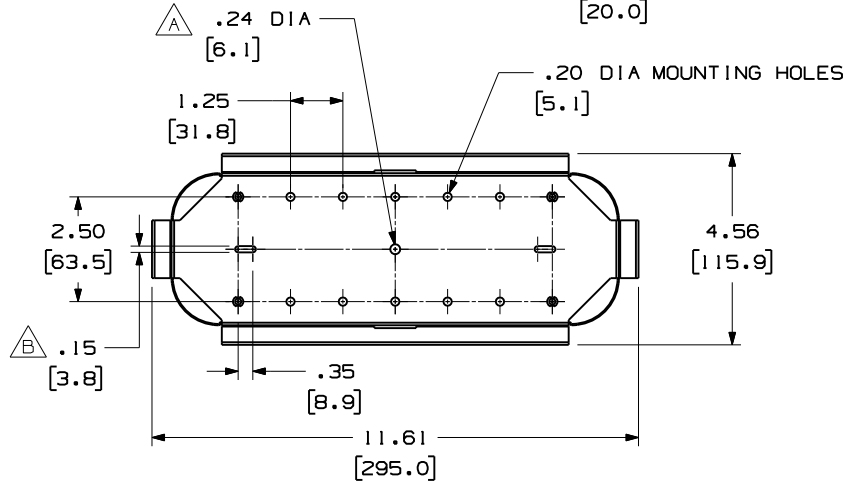


THIS COPY IS PROVIDED ON A RESTRICTED BASIS AND IS NOT TO BE USED IN ANY WAY DETRIMENTAL TO THE INTERESTS OF PANDUIT CORP.

| | |
|-------------|-----------------------|
| PANDUIT P/N | WEIGHT |
| FST24H3 | .2 LB/EA 90 g/EACH |



- NOTES:
1. SEE CATALOG FOR COMPLETE LIST OF PARTS APPLICABLE FOR USE WITH THIS PRODUCT.
 2. DIMENSIONS IN PARENTHESIS ARE METRIC.
 3. SPLICE TRAY HOLDER WILL ACCOMMODATE UP TO (3) FST24 SPLICE TRAYS.
 4. SPLICE TRAY HOLDER IS SUPPLIED WITH 1 TY-TAK AND 4 PUSH FASTENERS
 5. MATERIAL - ALUMINUM



MODEL FILENAME V10049FN_FST24H3_ASSY_01.prt
CAD FILENAME/LAYERS V10049FN_DC_01A.prt (1)

PANDUIT CORP. TINLEY PARK, ILLINOIS
SPLICE TRAY HOLDER (FST24H3)
CUSTOMER DRAWING

UNLESS OTHERWISE SPECIFIED, DIMENSIONAL TOLERANCES ARE:
(.X) ± .03 (,.XXX) ± .005
(.XX) ± .015 ANGLES ± 1°

UNLESS OTHERWISE SPECIFIED, ALL DIMENSIONS ARE GIVEN IN INCHES, THIRD ANGLE PROJECTION.

| REV | DATE | BY | CHK | DESCRIPTION | ECN | R | CUST | SUP | OTH |
|-----|---------|------|-----|--|----------|---|------|-----|-----|
| O1 | 5-10-02 | RYB | | A. ADD .24 DIA HOLE; B. ADD .15 X .35 SLOTS (2X); | 10049-59 | | | | |
| R | 5-2-02 | JDWE | | RELEASED TO PRODUCTION | 10049-59 | | | | |

DRAWN BY JDWE
DATE 5-2-02
CHK'D

MAT'L: SEE NOTES

SCALE NONE
DRAWING NO. 10049-59
DWG SIZE A

X-ON Electronics

Largest Supplier of Electrical and Electronic Components

Click to view similar products for [Wire Ducting & Raceways](#) category:

Click to view products by [Panduit](#) manufacturer:

Other Similar products are found below :

[800A-LB](#) [801I-LSP](#) [802A-ECSP](#) [802I-ICSP](#) [923223-000](#) [PRAF6WH-X](#) [A0405538](#) [1301150342](#) [1301160034](#) [1301170070](#) [1301180011](#)
[1301230083](#) [1301230153](#) [1301240273](#) [1301250006](#) [1302261238](#) [1302261321](#) [1302262552](#) [1302263103](#) [1302263178](#) [1302263259](#)
[1302263816](#) [1302263860](#) [1302264375](#) [1302264390](#) [1301150343](#) [1301160030](#) [1301170050](#) [1301170051](#) [1301170061](#) [1301180013](#)
[1301230086](#) [1301230130](#) [1301240054](#) [1302260055](#) [1302260376](#) [1302261343](#) [1302261344](#) [1302262674](#) [1302263095](#) [1302263166](#)
[1302263209](#) [1302263513](#) [1302263851](#) [1302263870](#) [1302264137](#) [1302264218](#) [DD1/J](#) [AX101472](#) [AX102007](#)