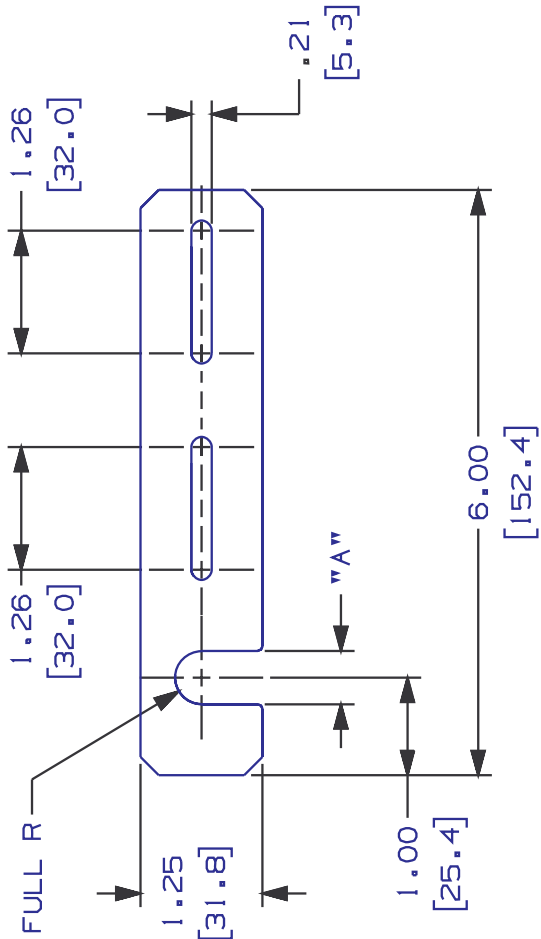


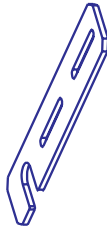
THIS COPY IS PROVIDED ON A RESTRICTED BASIS AND IS NOT TO BE USED IN ANY WAY DETRIMENTAL TO THE INTERESTS OF PANDUIT CORP.

PANDUIT P/N	"A"	WEIGHT
FTRBE12	.54 (13.7)	5.4 LB/10 PCS. (2430 G/10 PCS.)
FTRBE12M	.54 (13.7)	5.4 LB/10 PCS. (2430 G/10 PCS.)
FTRBE58	.65 (16.5)	5.3 LB/10 PCS. (2410 G/10 PCS.)



NOTES:

- SEE CURRENT CATALOG FOR ADDITIONAL PART SUFFIXES TO INDICATE COLOR AND OR PACKAGE QUANTITY.
- BRACKET ATTACHES TO EXISTING 1/2", 5/8", OR 12mm THREADED ROD (NOT INCLUDED).
- FTRBE12 AND FTRBE58 KITS CONTAIN ONE BRACKET AND TWO 10-32 x 1/2" PANHEAD SCREWS WITH LOCKWASHERS AND HEX NUTS, AND TWO 1/2" OR 5/8" SPLIT NUTS.
- FTRBE12M KIT CONTAINS ONE BRACKET, TWO M5X0.8X16mm PANHEAD MACHINE SCREWS WITH HEX NUTS AND LOCKWASHERS, AND TWO 12mm SPLIT NUTS.
- DIMENSIONS IN PARENTHESIS ARE IN METRIC.



CAD FILENAME/LAYERS

D35245B0_DC_FTRBE_01.PRT

PANDUIT

CORP. TINLEY PARK, ILLINOIS

FIBER-DUCT BRACKET KIT (WITH EXISTING ROD)
(FTRBE12, FTRBE12M, FTRBE58)
CUSTOMER DRAWING

UNLESS OTHERWISE SPECIFIED,
DIMENSIONAL TOLERANCES ARE:
(.XX) ± .04 (1.0) ANGLES ±
(.XXX) ±

UNLESS OTHERWISE SPECIFIED,
ALL DIMENSIONS ARE GIVEN
IN INCHES, THIRD ANGLE PROJECTION.

DRAWN BY MAT'L:

SCALE NONE

DATE 11-20-96

11 GAGE
C.R.S.

DWG

SIZE A

CHK'D CEF

SUP

CUST

R

ECN

35245-15

35245-15

CEP

CEP

RELEASED TO PRODUCTION

DESCRIPTION

BY CHK

DATE

11-20-96

DW

1-19-99

REV

X-ON Electronics

Largest Supplier of Electrical and Electronic Components

Click to view similar products for [Racks & Rack Cabinet Accessories](#) category:

Click to view products by [Panduit](#) manufacturer:

Other Similar products are found below :

[M00-PLN](#) [F2424](#) [8351-832-A-24](#) [9104](#) [9105](#) [PLFF2000](#) [H-9163-B](#) [1427C3](#) [HTS10](#) [PC-79](#) [SC10-3A](#) [SC4-28](#) [CG3-340S/12](#) [CP-001BK](#)
[M6123-4007-SS](#) [TS170](#) [LP40](#) [5261304-07](#) [CG3-160G](#) [7112C-PLN](#) [ALUM](#) [CM10](#) [8610-3124-S-26](#) [TS81](#) [7142](#) [GP134](#) [M6125-4007-A-24](#)
[M6127-4007-SS](#) [PBCOVER](#) [512](#) [AEG-4000G](#) [AEG-3000G](#) [HD99](#) [SR2-66A2](#) [FP10B4HP-1](#) [FP52-2](#) [1406-1006-01](#) [29478](#) [TS2535](#) [TS169-](#)
[6](#) [CAC2](#) [HA19-3U](#) [BR-19-10-1](#) [TS180](#) [CG3-ESD](#) [SC11-1](#) [CFS-1.00/2.20](#) [AX6145WM](#) [HEC0800PB](#) [ZC633R](#) [140PLN](#)