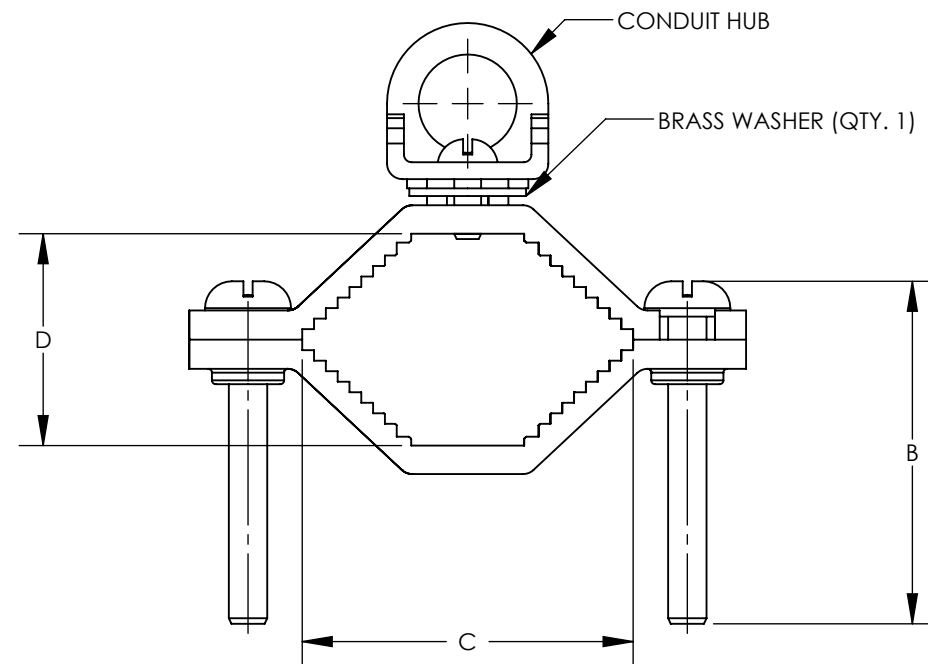
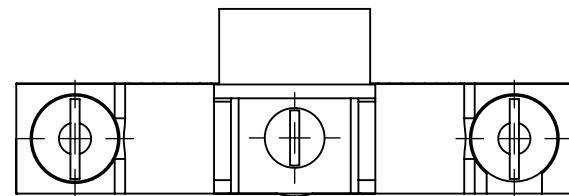


NOTES:

- MATERIAL:
BODY - BRONZE (GUN METAL)
SCREW - STEEL, ZINC PLATED
- PARTS ARE cULus LISTED TO UL467 AS
GROUNDING & BONDING EQUIPMENT.
- SEE WWW.PANDUIT.COM FOR PART NUMBER
SUFFIX DESIGNATION FOR PACKAGE SIZE.



PART NUMBER	CONDUIT HUB SIZE	DIMENSIONS IN [mm] +/- .05 [1.3]			DESCRIPTION	WATER PIPE	GROUNDING WIRE
		B	C	D			
GPC4-1-12	1/2"	1.65 [41.9]	1.00 [25.4]	0.56 [14.2]	GROUND CLAMP FOR RIGID CONDUIT WITH 1/2 HUB	1/2" - 1"	8 - 4 STR
GPC4-1-34	3/4"	1.65 [41.9]	1.00 [25.4]	0.56 [14.2]	GROUND CLAMP FOR RIGID CONDUIT WITH STEEL SCREWS 3/4 HUB	1/2" - 1"	8 - 4 STR
GPC4-1-1	1"	1.65 [41.9]	1.00 [25.4]	0.56 [14.2]	GROUND CLAMP FOR RIGID CONDUIT WITH STEEL SCREWS 1 HUB	1/2" - 1"	8 - 4 STR
GPC4-2-12	1/2"	2.22 [56.4]	2.08 [52.8]	1.33 [33.8]	GROUND CLAMP FOR RIGID CONDUIT WITH 1/2 HUB	1-1/4" - 2"	8 - 4 STR
GPC4-2-34	3/4"	2.22 [56.4]	2.08 [52.8]	1.33 [33.8]	GROUND CLAMP FOR RIGID CONDUIT WITH STEEL SCREWS 3/4 HUB	1-1/4" - 2"	8 - 4 STR
GPC4-2-1	1"	2.22 [56.4]	2.08 [52.8]	1.33 [33.8]	GROUND CLAMP FOR RIGID CONDUIT WITH STEEL SCREWS 1 HUB	1-1/4" - 2"	8 - 4 STR
GPC4-4-12	1/2"	4.25 [108.0]	3.81 [96.8]	2.75 [69.9]	GROUND CLAMP FOR RIGID CONDUIT WITH 1/2 HUB	2-1/2" - 4"	8 - 4 STR
GPC4-4-34	3/4"	4.25 [108.0]	3.81 [96.8]	2.75 [69.9]	GROUND CLAMP FOR RIGID CONDUIT WITH 3/4 HUB	2-1/2" - 4"	8 - 4 STR
GPC4-4-1	1"	4.25 [108.0]	3.81 [96.8]	2.75 [69.9]	GROUND CLAMP FOR RIGID CONDUIT WITH 1 HUB	2-1/2" - 4"	8 - 4 STR
GPC4-6-12	1/2"	5.20 [132.1]	6.00 [152.4]	2.90 [73.7]	GROUND CLAMP FOR RIGID CONDUIT WITH 1/2 HUB	4-1/2" - 6"	8 - 4 STR
GPC4-6-34	3/4"	5.20 [132.1]	6.00 [152.4]	2.90 [73.7]	GROUND CLAMP FOR RIGID CONDUIT WITH 1/2 HUB	4-1/2" - 6"	8 - 4 STR
GPC4-6-1	1"	5.20 [132.1]	6.00 [152.4]	2.90 [73.7]	GROUND CLAMP FOR RIGID CONDUIT WITH STEEL SCREWS 1 HUB	4-1/2" - 6"	8 - 4 STR

REV	DATE	BY	CHK	APR	DESCRIPTION	ECN	TITLE	ITEM REVISION NAME	DATASET FILE NAME	MATERIAL	DRAWING NUMBER	SHEET 1 OF 1	SIZE
							BRONZE GROUND PIPE CLAMP CUSTOMER DRAWING	10J018AK/01	10J018AK-JC/01.SLDDRW	SEE NOTES	10J018AK-JC		B
01	8/12	JHNU	SRBI	RGB	REVISED P/N'S: GPC4-1-12 WAS GPC6-1-12, GPC4-1-34 WAS GPC6-1-34, GPC4-1-1 WAS GPC6-1-1, GPC4-2-12 WAS GPC6-2-12, GPC4-2-34 WAS GPC6-2-34, GPC4-2-1 WAS GPC6-2-1, GPC4-4-12 WAS GPC6-4-12, GPC4-4-34 WAS GPC6-4-34, GPC4-4-1 WAS GPC 6-4-1, GPC4-6-12 WAS GPC6-6-12, GPC4-6-34 WAS GPC6-6-34, GPC4-6-1 WAS GPC6-6-1	10J018AK-JC	UNLESS OTHERWISE SPECIFIED, DIMENSIONAL TOLERANCES ARE: IN [mm] .X ± .XXX ± .XX ± ANGLES ±						
00	7/12	JHNU	SRBI	RGB	DRAWING RELEASED	10J018AK-JC	THIRD ANGLE PROJECTION						
							DRAWN BY JHNU	DATE 7/12	CHK SRBI	SCALE N/A			

X-ON Electronics

Largest Supplier of Electrical and Electronic Components

Click to view similar products for [Cable Mounting & Accessories](#) category:

Click to view products by [Panduit](#) manufacturer:

Other Similar products are found below :

[582603-1](#) [009333-000](#) [727844N003](#) [747](#) [809090N001](#) [843188-000](#) [8666](#) [967279N002](#) [DB-11](#) [1300840039](#) [1300900096](#) [1301800416](#)
[1302264450](#) [1300830184](#) [1300830729](#) [1300900039](#) [1301580036](#) [1301850553](#) [1301860939](#) [1302000074](#) [1302261315](#) [1302264431](#)
[1337706-2](#) [APA18-AK](#) [1724](#) [1-787307-1](#) [185491N001](#) [1868](#) [HP-6N](#) [C-202-C](#) [202C221-13-0](#) [CA7308-000](#) [8S23-75FR-CS8184](#) [2684](#) [9648](#)
[3089](#) [988382-000](#) [A72821-000](#) [AA401](#) [173506-000](#) [1823](#) [202C292-13-0](#) [202C302-13-0](#) [2109](#) [300625](#) [3330](#) [3412](#) [356247-1](#) [M9142](#)
[M9143](#)