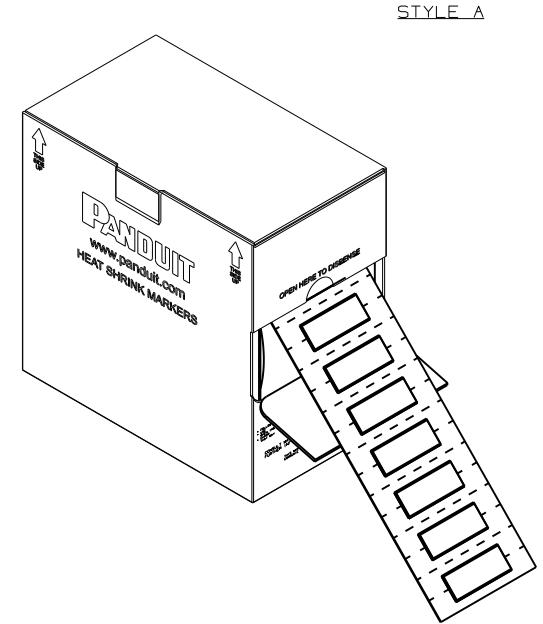
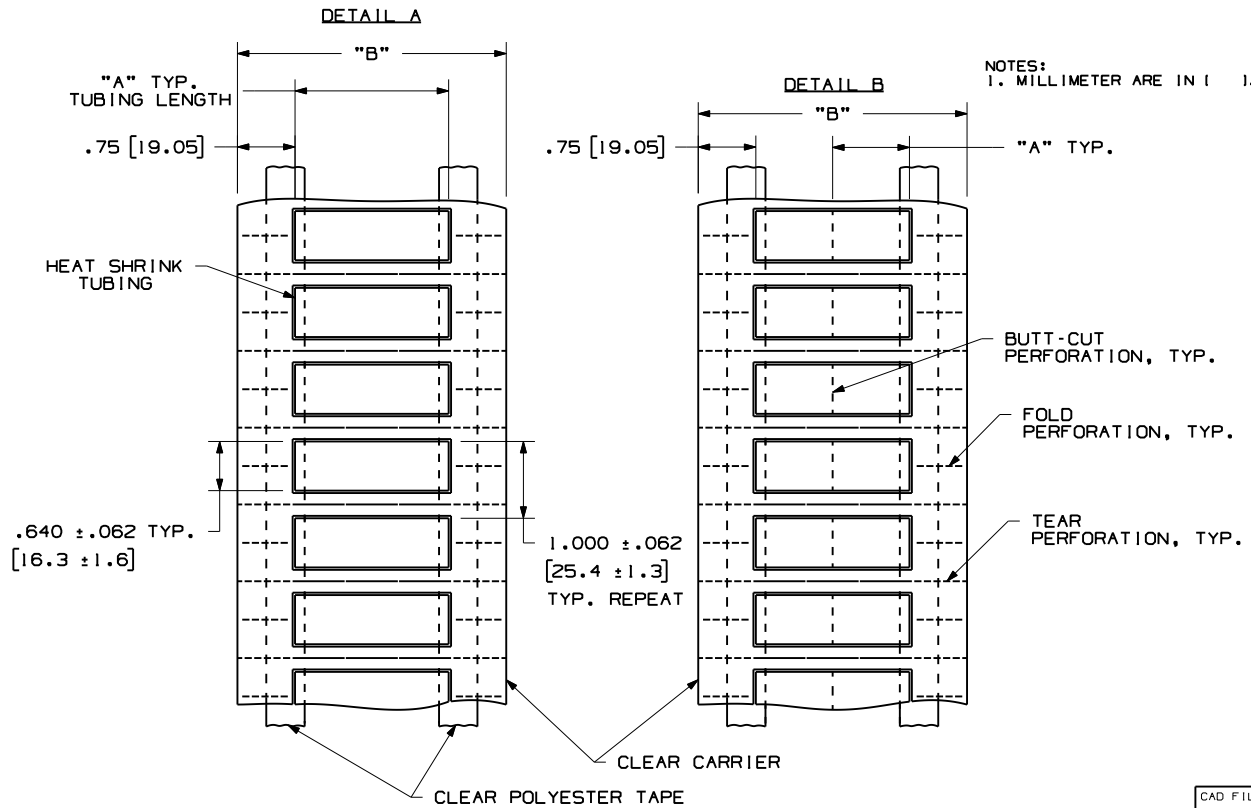


THIS COPY IS PROVIDED ON A RESTRICTED BASIS AND IS NOT TO BE USED IN ANY WAY DETRIMENTAL TO THE INTERESTS OF PANDUIT CORP.

| PART NUMBER   | SEE DETAIL | MATERIAL | "A" +/- .062   | "B" +/- .062   | INSIDE NOMINAL DIA. | MIN ID SUPPLIED | MAX. RECOVERED | MARKER ACROSS | TUBING COLOR | PKG. QTY. | SEE STYLE |
|---------------|------------|----------|----------------|----------------|---------------------|-----------------|----------------|---------------|--------------|-----------|-----------|
| H100X064HST-2 | B          | GMUFR31  | 1.00<br>[25.4] | 3.50<br>[88.9] | 3/8 in.<br>[9.5 mm] | 0.38<br>[9.6]   | 0.12<br>[3.0]  | 2             | YELLOW       | 1000      | A         |
| H200X064HST-2 | A          |          | 2.00<br>[50.8] |                |                     |                 |                | 1             |              | 500       |           |



|  |  |   |                         |
|--|--|---|-------------------------|
| CAD FILENAME/LAYERS  |  | 100815BG-DC-C10960/00A  |                         |
| <h1>PANDUIT</h1> CORP. TINLEY PARK, ILLINOIS   |  |   |                         |
| <b>CUSTOMER DRAWING H**X064H*T-2</b><br><b>TWO-SIDED HEAT SHRINK LABEL</b><br><b>FLUID RESISTANT</b> |  |   |                         |
| UNLESS OTHERWISE SPECIFIED, DIMENSIONAL TOLERANCES ARE:  |  | UNLESS OTHERWISE SPECIFIED, ALL DIMENSIONS ARE GIVEN IN INCHES, THIRD ANGLE PROJECTION. |                         |
| (.X) ± .12<br>(.XX) ± .062   |  | (.XXX) ± .020<br>ANGLES ±   |                         |
| DRAWN BY<br><b>RVU</b>   | MAT'L;<br><b>HEAT SHRINK TUBING, GMUHF21</b> | SCALE<br><b>NTS</b>   |                         |
| DATE<br><b>11/14/11</b>  | CHK'D  | DRAWING NO.<br><b>C10960</b>  | DWG<br><b>A</b><br>SIZE |

| REV | DATE     | BY  | CHK | DESCRIPTION      | ECN  | R | CUST | SUP |
|-----|----------|-----|-----|------------------|------|---|------|-----|
| 0   | 12/13/11 | RVU |     | DRAWING RELEASE. | 6566 | R |      |     |

## X-ON Electronics

Largest Supplier of Electrical and Electronic Components

*Click to view similar products for [Wire Labels & Markers](#) category:*

*Click to view products by [Panduit](#) manufacturer:*

Other Similar products are found below :

[89078GBEST](#) [89082GBESR](#) [89082GBEST](#) [PCL025-4](#) [5761-2SF](#) [58400](#) [586R734H02](#) [M1.040.0000.6](#) [CRS-CM5M](#) [CRS-M18M](#) [CS1836-000](#) [CS8626-000](#) [CU6337-000](#) [CU6342-000](#) [CU6343-000](#) [CWD01-0](#) [CWD012-0](#) [CWD012-7](#) [CWD015-3](#) [CWD015-7](#) [CWD02-0](#) [CWD02-3](#) [CWD02-4](#) [CWD02-6](#) [CWD02-8](#) [CWD02-A](#) [CWD02-D](#) [CWD02-H](#) [CWD02-K](#) [CWD02-L](#) [CWD02-M](#) [CWD02-P](#) [CWD02-Q](#) [CWD02-R](#) [CWD02-U](#) [CWD02-W](#) [CWD02-Y](#) [CWD03-+](#) [CWD03-0](#) [CWD03-P](#) [CWD06-0](#) [CWD06-8](#) [CWD06-9](#) [CWD06-L](#) [CWD06-N](#) [CWD09-0](#) [CWD09-5](#) [CWD09-7](#) [6806810001](#) [CZ2857-000](#)