

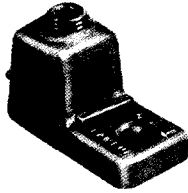
# PANDUIT® Cast Copper Mechanical Connectors (Types HL, HLB, & HLA-90)

## Copper Lugs

For Use With Copper Cables Only

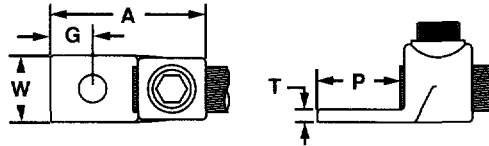
### Premium Single Barrel Lug Type HL

One-Hole Straight Tongue



Part Number	Copper Conductor Size Range	Navy Cable Size	Bolt Hole Size	Hex Key Size	Dimensions in Inches					Std. Pkg. Qty.
					W	P	A	G	T	
HL1-25-X	14 Sol.-8 Str.	4-14	1/4"	**	.56	.63	1.25	.31	.19	10
HL4-1-X	8 Sol.-4 Str.	23-40	1/4"	**	.56	.63	1.25	.31	.19	10
HL8-1-X	4 Sol.-1 Str.	50-75	1/4"	7/16"	.75	.69	1.56	.34	.22	10
HL13-1-5	1 Str.-2/0 Str.	100-125	3/8"	9/16"	.81	.88	1.88	.44	.22	5
HL21-1-5	2/0 Str.-4/0 Str.	150-200	3/8"	9/16"	1.00	1.00	2.19	.50	.25	5
HL30-1-2	4/0 Str.-300 MCM	250-300	1/2"	5/8"	1.06	1.25	2.50	.63	.31	2
HL50-1-2	300 MCM-500 MCM	400-500	1/2"	3/4"	1.38	1.50	3.00	.75	.34	2
HL75-1-1	500 MCM-750 MCM	500-750	5/8"	7/8"	1.63	1.75	3.44	.88	.38	1
HL100-1-1	750 MCM-1000 MCM	800-1000	5/8"	7/8"	1.88	1.88	3.81	.94	.50	1

\*\* Uses slotted head set screw



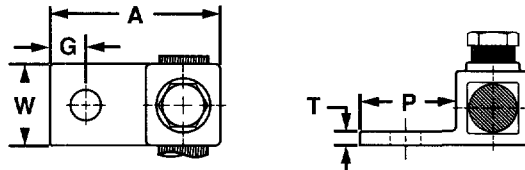
### Premium Single Barrel Flag Lug—Type HLB

One-Hole Straight Tongue



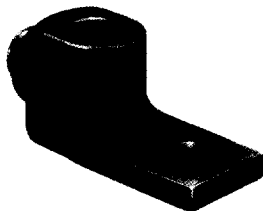
Part Number	Copper Conductor Size	Bolt Hole Size	Hex Key Size	Dimensions in Inches					Std. Pkg. Qty.
				W	P	A	G	T	
HLB4-1-X	8 Sol. - 4 Str.	1/4"	**	.50	.63	1.25	.31	.19	10

\*\* Uses slotted head set screw



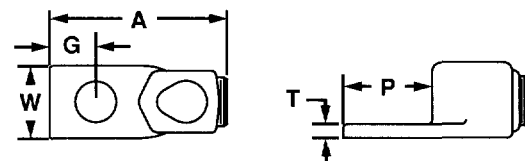
### Premium Single Barrel 90° Lug—Type HLA-90

One-Hole Straight Tongue



Part Number	Copper Conductor Size	Bolt Hole Size	Hex Key Size	Dimensions in Inches					Std. Pkg. Qty.
				W	P	A	G	T	
HLA4-1-90-X	8 Sol. - 4 Str.	1/4"	**	.56	.63	1.81	.31	.19	10
HLA8-1-90-X	4 Sol. - 1 Str.	1/4"	7/16"	.75	.69	1.50	.34	.22	10
HLA13-1-90-5	1 Str. - 2/0 Str.	3/8"	9/16"	.81	.88	2.38	.44	.22	5
HLA21-1-90-5	2/0 Str. - 4/0 Str.	3/8"	9/16"	1.00	1.00	2.69	.50	.25	5

\*\* Uses slotted head set screw



## X-ON Electronics

Largest Supplier of Electrical and Electronic Components

*Click to view similar products for [Terminals](#) category:*

*Click to view products by [Panduit](#) manufacturer:*

Other Similar products are found below :

[00-054007-01074-6](#) [00-054007-70206-1](#) [00-054007-70210-8](#) [00-054007-70217-7](#) [00-054007-70226-9](#) [00-054007-70228-3](#) [00-054007-70248-1](#) [00-054007-70256-6](#) [00-054007-70301-3](#) [00-054007-70316-7](#) [0-0320562-0](#) [00-054007-49560-4](#) [00-054007-70209-2](#) [00-054007-70225-2](#) [00-054007-70227-6](#) [00-054007-70231-3](#) [00-054007-70241-2](#) [00-054007-70242-9](#) [00-054007-70244-3](#) [00-054007-70246-7](#) [00-054007-70263-4](#) [00-054007-70288-7](#) [00-054007-70290-0](#) [00-054007-70300-6](#) [00-054007-70304-4](#) [01-2065-1-0216](#) [01-2900-1-04412](#) [00581P0075](#) [600TS-10](#) [60205-1](#) [604200-1](#) [605601-1](#) [60598-1-CUT-TAPE](#) [61314-6-C](#) [61810-3](#) [61-S](#) [61-SN](#) [626-0194](#) [62-NBM-A](#) [62-SN](#) [62-SP](#) [63-S](#) [640179-1](#) [M55155/059I03](#) [M55155/079C01](#) [M55155/099H02](#) [M55155/109H01](#) [M55155/109H02](#) [M55155/12XH05](#) [M55155/16XH02](#)