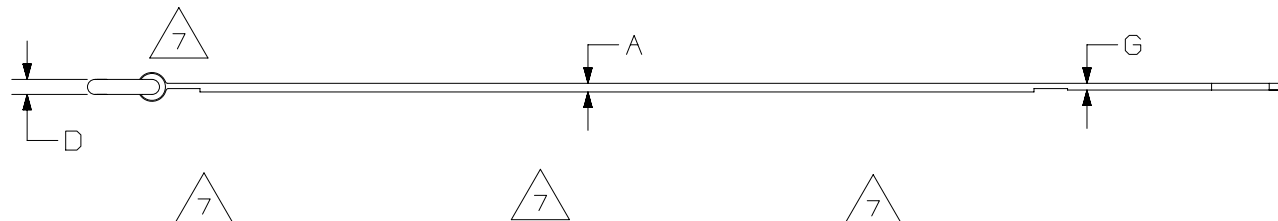
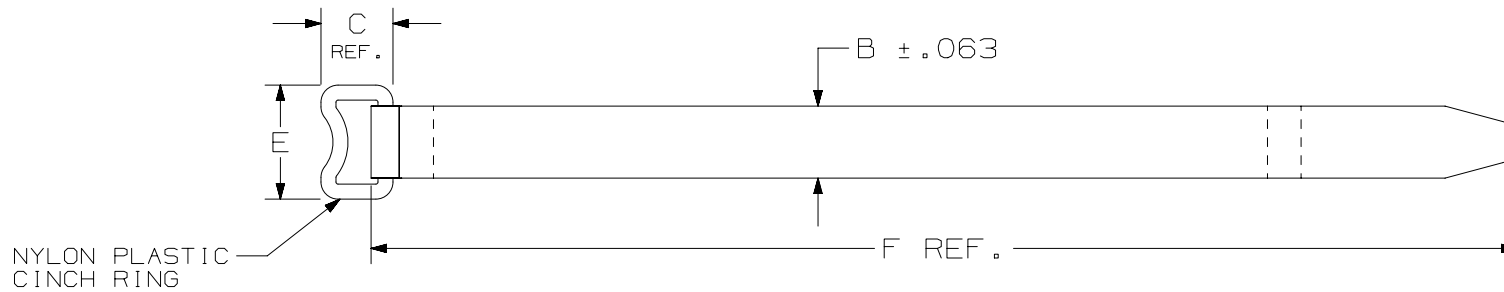


THIS COPY IS PROVIDED ON A RESTRICTED BASIS AND IS NOT TO BE USED IN ANY WAY DETRIMENTAL TO THE INTERESTS OF PANDUIT CORP.

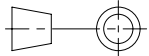


PANDUIT PART NO.	BUNDLE DIA.		A in (mm)	B in (mm)	C in (mm)	D in (mm)	E in (mm)	F in (mm)	G in (mm)	MIN. LOOP TENSILE lbs. (N)	CROSS SECTION
	MIN. in (mm)	MAX. in (mm)									
HLC3S	2.0 (50.8)	3.0 (76.2)	.080 (2.0)	.750 (19.1)	.750 (19.1)	.183 (4.6)	1.10 (27.9)	12.0 (305)	.080 (2.0)	50 (222)	STANDARD
HLC5S	3.0 (76.2)	5.0 (127)	.080 (2.0)	.750 (19.1)	.750 (19.1)	.183 (4.6)	1.10 (27.9)	18.0 (457)	.080 (2.0)	50 (222)	STANDARD

NOTES:

- 1) SEE CURRENT PRICE SHEET FOR PART NUMBER SUFFIX DESIGNATION FOR PACKAGE SIZE AND COLOR.
- 2) MINIMUM 2" OVERLAP REQUIRED TO ACHIEVE LOOP TENSILE RATING.

REV	DATE	BY	CHK	APR	DESCRIPTION	ECN
9	01-25-19	SAT	DWW	ML	C. REMOVED WEIGHT COLUMN.	SS-26935
8	3/16/18	JSP	DWW	ML	B. ADDED TOLERNACE TO DIM. B.	SS-26935
7	5/20/14	RVU	DJW	KLN	A: .080 WAS .100. D: .183 WAS .156. G: .080 WAS .100. REMOVE .150 LEADER.	GAECN01997
6	3/31/06	ERW			ADDED "APPROXIMATE WEIGHT PER 100PCS" COLUMN.	26935

TITLE TAK-TY HOOK & LOOP CABLE TIES HLC SERIES		PANDUIT
CUSTOMER DRAWING		
ITEM REVISION NAME SS-26935/AD		MATERIAL: WOVEN NYLON HOOK/LOOP COLOR: BLACK
DATASET FILE NAME SS-26935/AD		
UNLESS OTHERWISE SPECIFIED, DIMENSIONAL TOLERANCES ARE: IN [mm] .x ± .xxx ± .030 [.762] .xx ± .125 [3.175] ANGLES ±		DRAWING NUMBER: SS-26935
 THIRD ANGLE PROJECTION		
DRAWN BY KET	DATE 11/23/94	CHK HVP
SCALE NONE		SIZE A

X-ON Electronics

Largest Supplier of Electrical and Electronic Components

Click to view similar products for [Cable Ties](#) category:

Click to view products by [Panduit](#) manufacturer:

Other Similar products are found below :

[65037-C](#) [770-1751-10](#) [REL50L0C2](#) [20093-0](#) [SF600-120X](#) [SJ3518FR-1x50](#) [SJ3526N-Beige-2"x50yd](#) [SJ3526N BLACK 58" X 50YD](#) [SJ3571](#)
[SJ-3571-1"x50yd-Black](#) [PLT2S-C4](#) [34-455-C](#) [3722](#) [561-B110120](#) [561-N3510](#) [TYZ528M](#) [34-463-C](#) [URT20S-M](#) [06226](#) [08350-0](#) [08600-0](#)
[08376-0](#) [10037-0](#) [10325-0](#) [10362-0](#) [10606-0](#) [1122-4JW8](#) [561-EZ250](#) [561-EZ625](#) [SJ3527N-Beige-2"x50yd](#) [SJ3527N-LOOP-BLACK-1](#)
[SJ3572-2"x50yd-Black](#) [CF5625-000](#) [65004-C](#) [65005-C](#) [65007-C](#) [65036-C](#) [157-00039](#) [770-1708](#) [770-1753-10](#) [770-1752](#) [SPNY-041-9](#)
[SF400-120X](#) [3719](#) [08582-0](#) [08386-0](#) [10431-0](#) [08359-0](#) [10620-0](#) [10345-0](#)