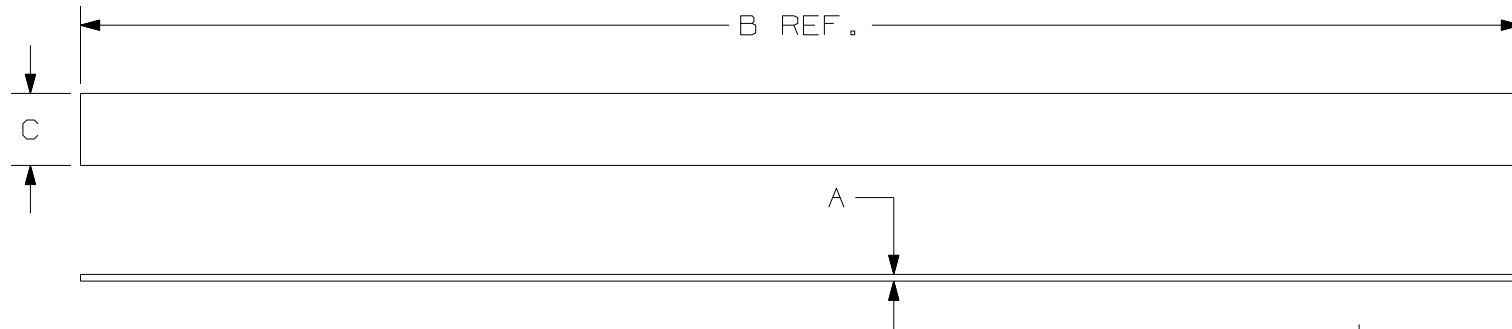


THIS COPY IS PROVIDED ON A RESTRICTED BASIS AND IS NOT TO BE USED IN ANY WAY DETRIMENTAL TO THE INTERESTS OF PANDUIT CORP.



PANDUIT PART NO.	BUNDLE DIA.		A in (mm)	B in (mm)	C in (mm)	D in (mm)	COLOR	UL LISTED * RATE LOAD lbs. (N)	APPROXIMATE WEIGHT lbs/10 ROLLS (g) (100 PIECES)
	MIN. (mm)	MAX. (mm)							
HLSP1.5S-X0	.25 (6.4)	1.5 (38.1)	.100 (2.5)	6.00 (152)	.750 (19.1)	2.8 (71)	BLACK	50 (222)	.43 (194)
HLSP1.5S-X12	.25 (6.4)	1.5 (38.1)	.100 (2.5)	6.00 (152)	.750 (19.1)	2.8 (71)	MAROON	50 (222)	.43 (194)
HLSP3S-X0	.25 (6.4)	3.2 (81.3)	.100 (2.5)	12.00 (305)	.750 (19.1)	3.6 (91)	BLACK	50 (222)	.84 (380)
HLSP3S-X12	.25 (6.4)	3.2 (81.3)	.100 (2.5)	12.00 (305)	.750 (19.1)	3.6 (91)	MAROON	50 (222)	.84 (380)
HLSP5S-X0	.25 (6.4)	5.0 (127)	.100 (2.5)	18.00 (457)	.750 (19.1)	4.5 (114)	BLACK	50 (222)	1.24 (562)
HLSP5S-X12	.25 (6.4)	5.0 (127)	.100 (2.5)	18.00 (457)	.750 (19.1)	4.5 (114)	MAROON	50 (222)	1.24 (562)

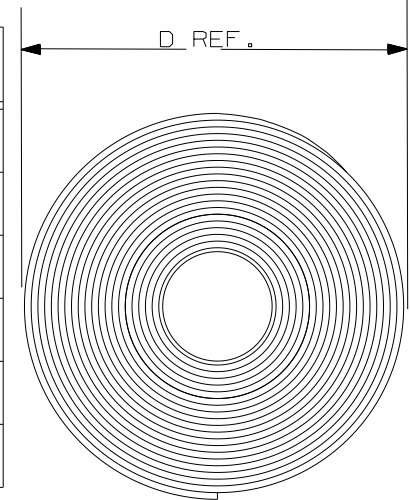


ILLUSTRATION "A"

NOTES:

- 1) HLSP TIES AVAILABLE IN BLACK AND MAROON ONLY.
- \* 2) MINIMUM 2" (50.8 mm) OVERLAP REQUIRED TO ACHIEVE UL LISTED RATED LOAD. (1.5 IN<sup>2</sup> OR 968 mm<sup>2</sup>)
- 3) SUITABLE FOR USE IN AIR HANDLING SPACES PER NEC SEC. 300-22 (C) AND (D).
- 4) ALL LENGTHS PACKED IN ROLL FORM. (SEE ILLUSTRATION "A")

DIMENSIONS IN PARENTHESIS ARE IN METRIC UNITS

W10001DM/05-SS-27183

PANDUIT CORP. TINLEY PARK, ILLINOIS

TAK-TY HOOK & LOOP CABLE TIES  
HLSP SERIES  
FLAMMABILITY RATING: UL 94-V2

UNLESS OTHERWISE SPECIFIED,  
DIMENSIONAL TOLERANCES ARE:  
(.X) ± (.XXX) ± .035  
(.XX) ± ANGLES ±

UNLESS OTHERWISE SPECIFIED,  
ALL DIMENSIONS ARE GIVEN  
IN INCHES, THIRD ANGLE PROJECTION.

DRAWN BY  
K. TROST

MAT'L:

SCALE NONE

DATE  
12-29-98

POLYPROPYLENE HOOK/  
NYLON KNIT LOOP

DRAWING NO.

SS-27183

DWG  
A  
SIZE

REV	DATE	BY	CHK	DESCRIPTION	ECN	R	CUST	SUP
5	2/3/10	JABO	TGS	CORRECTED -X0 UL LISTED RATE LOAD	SS-27183	5	TGS	

## X-ON Electronics

Largest Supplier of Electrical and Electronic Components

*Click to view similar products for [Cable Ties](#) category:*

*Click to view products by [Panduit](#) manufacturer:*

Other Similar products are found below :

[65037-C](#) [770-1751-10](#) [REL50L0C2](#) [20093-0](#) [SF600-120X](#) [SJ3518FR-1x50](#) [SJ3526N-Beige-2"x50yd](#) [SJ3526N BLACK 58" X 50YD](#) [SJ3571](#)  
[SJ-3571-1"x50yd-Black](#) [PLT2S-C4](#) [34-455-C](#) [3722](#) [561-B110120](#) [561-N3510](#) [TYZ528M](#) [34-463-C](#) [URT20S-M](#) [06226](#) [08350-0](#) [08600-0](#)  
[08376-0](#) [10037-0](#) [10325-0](#) [10362-0](#) [10606-0](#) [1122-4JW8](#) [561-EZ250](#) [561-EZ625](#) [SJ3527N-Beige-2"x50yd](#) [SJ3527N-LOOP-BLACK-1](#)  
[SJ3572-2"x50yd-Black](#) [CF5625-000](#) [65004-C](#) [65005-C](#) [65007-C](#) [65036-C](#) [157-00039](#) [770-1708](#) [770-1753-10](#) [770-1752](#) [SPNY-041-9](#)  
[SF400-120X](#) [3719](#) [08582-0](#) [08386-0](#) [10431-0](#) [08359-0](#) [10620-0](#) [10345-0](#)