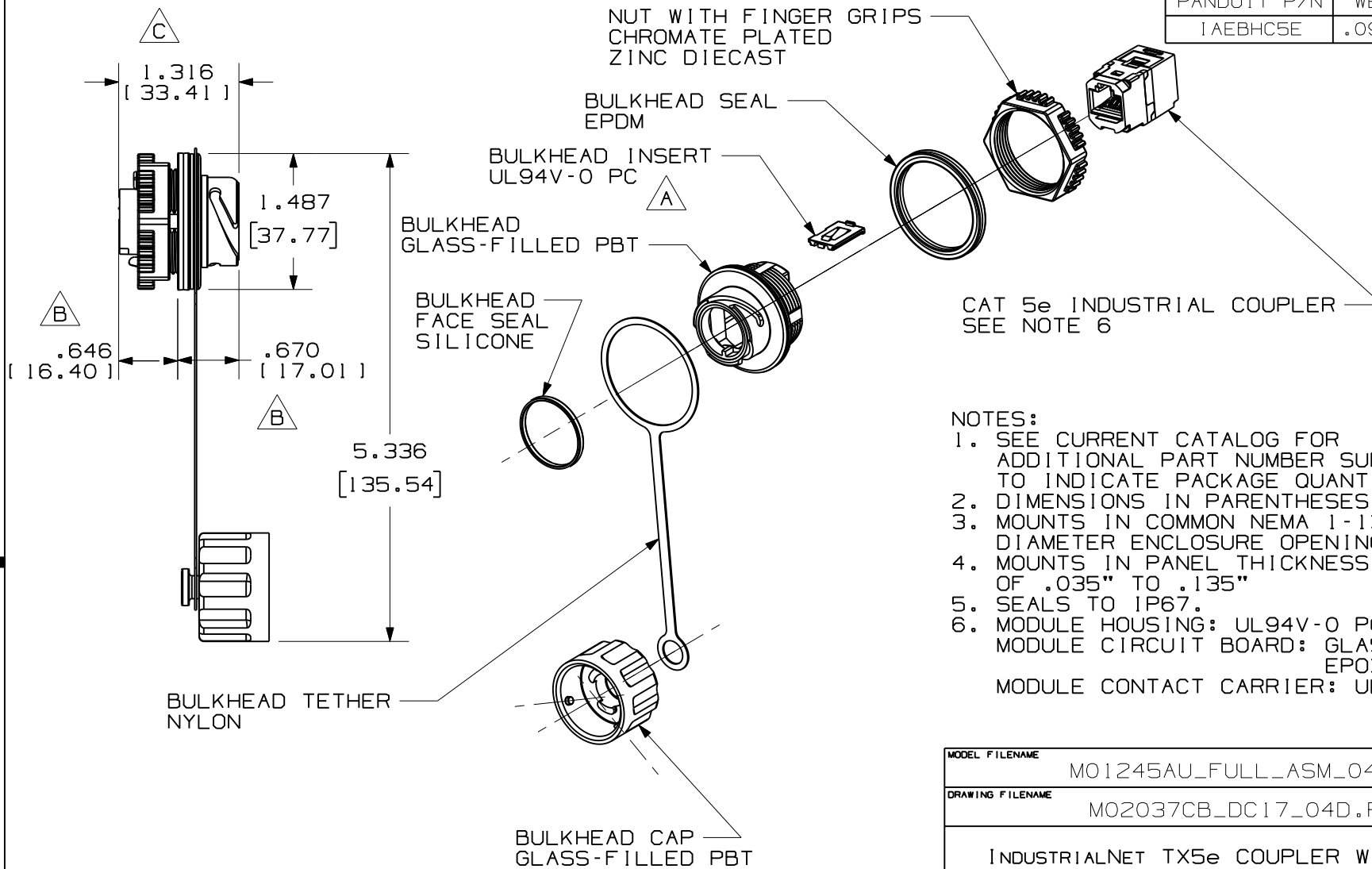


THIS COPY IS PROVIDED ON A RESTRICTED BASIS AND IS NOT TO BE USED IN ANY WAY DETRIMENTAL TO THE INTERESTS OF PANDUIT CORP.

PANDUIT P/N	WEIGHT (APPROX.)
1AEBHC5E	.0988 LB(44.8g) EA



NOTES:

1. SEE CURRENT CATALOG FOR ADDITIONAL PART NUMBER SUFFIXES TO INDICATE PACKAGE QUANTITY.
2. DIMENSIONS IN PARENTHESES ARE METRIC.
3. MOUNTS IN COMMON NEMA 1-13/64" (30.5mm) DIAMETER ENCLOSURE OPENING.
4. MOUNTS IN PANEL THICKNESS OF .035" TO .135"
5. SEALS TO IP67.
6. MODULE HOUSING: UL94V-0 PC  
 MODULE CIRCUIT BOARD: GLASS REINFORCED EPOXY RESIN  
 MODULE CONTACT CARRIER: UL94V-0 PC

MODEL FILENAME	MO1245AU_FULL_ASM_04.PRT	SIZE	A
DRAWING FILENAME	MO2037CB_DC17_04D.PRT		

INDUSTRIALNET TX5e COUPLER WITH BULKHEAD  
CUSTOMER DRAWING

<p>PANDUIT<sup>TM</sup> CORP. TINLEY PARK, ILL 60477</p>	I.I. NUMBER
	PRODUCT SPEC/ PKG SPEC
<p>THIRD ANGLE PROJECTION</p>	ASSY METHOD/ TEST METHOD
<p>ALL DIMENSIONS ARE GIVEN IN INCHES, UNLESS OTHERWISE SPECIFIED.</p> <p>DIMENSIONAL TOLERANCES ARE:          (.X) ± (.XXX) ±.010(1.25)          (.XX) ±.03(1.8) ANGLES ± 1°</p>	SCALE
DRAWN BY BJN	NONE
DATE 10-27-06	PART NO. SEE CHART
CHK'D CEF	DRAWING NO. 02037-17

REV	DATE	BY	CHK	DESCRIPTION	ECN	R	CUST	SUP	OTH
4	10-21-08	BJN	EJH	C. 1.316[ 33.41 ] WAS 1.305[ 33.16 ]	02037-17		VMB		
3	10-15-08	BJN	EJH	B. ADDED .646[ 16.40 ] & .670 [ 17.01 ] PANEL PROTRUDING DIMS	02037-17		VMB		
2	3-24-08	BJN	RJDU	A. PC WAS ABS	02037-17		VMB		
1	3-4-08	BJN	RJDU	REVISED & REDRAWN	02037-17		VMB		
R	10-27-06	BJN	CEF	RELEASED TO PRODUCTION	02037-17		CEF		

## X-ON Electronics

Largest Supplier of Electrical and Electronic Components

*Click to view similar products for [Modular Connectors](#) / [Ethernet Connectors](#) category:*

*Click to view products by [Panduit](#) manufacturer:*

Other Similar products are found below :

[8949-H88/06BLKA/SN](#) [74441-0010/BKN](#) [MP1010RX-1000](#) [MP44RX-1000](#) [PHP-6P6C-5](#) [GAX-3-66](#) [GAX-8-62](#) [GDCX-PA-66-50](#) [GDCX-PN-64](#) [GDCX-PN-66](#) [GDCX-PN-66-50](#) [GDLX-A-66](#) [GDLX-N-66](#) [GDLX-S-66](#) [GDLX-S-88K](#) [GDTX-S-88-50](#) [GDX-PA-1010](#) [GLX-N-1010M-BLK](#) [GLX-S-88M-BLK](#) [GMX-N-1010](#) [GMX-S-1010](#) [GMX-S-66](#) [GMX-SMT4-N-88](#) [GPX-2-64](#) [GSGX-N-2-88](#) [GSGX-N-4-88](#) [GSX-NS2-88-3.05](#) [GSX-NS2-88-3.05-50](#) [GSX-NS-88-3.05-50](#) [PT-108A-8C-UL](#) [PT-J951-8C](#) [PTS-J531-8CS-50UL](#) [1-1775629-2](#) [A-2014-0-4](#) [GWLX-S-88-GR](#) [GWLX-S9-88-YG](#) [DC-1021-8-WH-6](#) [1300530003](#) [1324640-4](#) [RJ11FTVC2G](#) [RJ11FTVC2N](#) [RJFTVX2SA1G](#) [132764-001](#) [1413235](#) [MP88X-1000](#) [MPS88RX-5000](#) [E5288-S000K3-L](#) [E5908-15A242-L](#) [155302-001](#) [AX100653](#)