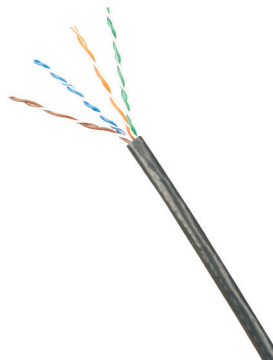


IndustrialNet™ Category 5e Solid Conductor UTP Copper Cable

specifications

Category 5e 4-pair UTP copper cable shall meet or exceed the ANSI/TIA-568-C.2 Category 5e and ODVA EtherNet/IP standards. The cable shall be power limited tray cable (PLTC). The solid copper conductors shall be 22 AWG with high density polyethylene (HDPE) insulation. The copper conductors shall be twisted in pairs and wrapped with a foam polypropylene tape to form a core. All pairs shall then be covered with an industrially rated black PVC jacket which shall be oil and sunlight resistant and flame retardant to CMX Outdoor/CMR for industrial Ethernet applications. This cable shall be rated for panel or on-machine applications where space is shared with 600V high voltage cables.



technical information

Category 5e component performance up to 100 meters:	Exceeds the requirements of ANSI/TIA-568-C.2 Category 5e and ODVA EtherNet/IP standards at swept frequencies up to 100 MHz
Electrical performance:	Meets all ODVA EtherNet/IP performance requirements
Standard compliances:	UL AWM Style 2570 (80°C 600V), UL 13 PLTC, Oil Res and Sun Res, UL 444 Sun Res, UL 1666 CMR
RoHS compliance:	Compliant (EU DIRECTIVE 2011/65/EU)
Conductors/insulators:	Four pairs of 22 AWG solid copper insulated with high density polyethylene (HDPE) insulation
Insulation diameter:	1.07 – 1.32mm (0.042 - 0.052 in.)
Flame rating:	CMX Outdoor/CMR
Installation tension:	110 N (25 lbf) maximum
Temperature rating:	-20°C to 75°C (-4°F to 167°F) during transport, installation and operation
Cable jacket:	Oil and sunlight resistant PVC
Cable diameter:	7.9mm (0.311 in.)
Cable weight:	14kg/305m (38 lbs./1000 ft.)
Packaging:	Packaged 305 meters (1000 feet) on a reel Package tested to ISTA Procedure 1A

key features and benefits

Third party tested:	Provides confidence that the cable delivers Category 5e performance for the 100 meter channel
Power Limited Tray Cable (PLTC) approved:	Can be used for Class 1 Div 2 hazardous location applications
Oil and sunlight performance rated cable jacket:	Delivers enhanced chemical resistance and mechanical performance
EtherNet/IP compliant design:	Provides performance levels required to support industrial network applications
600V rated jacket:	Approved for control panel or on-machine applications when the space is shared with 600V high voltage power cables, required for UL 508A

applications

IndustrialNet™ Category 5e Solid Conductor UTP Copper Cable provides reliability and high performance as an integral component of the end-to-end solution for industrial Ethernet based communications networks. The PLTC compliant cable with oil and UV resistant PVC jacket withstands harsh industrial conditions such as oil rigs and other hazardous Class 1 Div 2 environments. Rated for panel or on-machine

applications when the space is shared with 600V high voltage power cables, IndustrialNet™ Category 5e Solid Conductor UTP Copper Cable is ideal for control panel deployments featuring power source voltages. Category 5e rated cable is suitable for transmission of high performance 10BASE-T, 100BASE-T and 1000BASE-T uplinks featuring up to gigabit data transmission from the control panel to the consolidation point.

IndustrialNet™ Category 5e UTP Copper Cable

**CMX Outdoor/ IURHT5C04BL-UG
CMR 4-pair:**

IndustrialNet™ Category 6A/6/5e RJ45 Field Terminable Plug

Field terminable plug: ISPS688FA

IndustrialNet™ M12X-Code Field Terminable Plug

Field terminable plug: ISPS6A88MFA

IndustrialNet™ Category 5e Shielded 600V Rated Patch Cords

CM/CMX: ISTEPHCH1MTL*

IndustrialNet™ M12 D-Code to RJ45 Panel Mount Adapter

Panel mount adapter: ICAM12DRJS

IndustrialNet™ DIN Rail Mount Patch Panel

8-port: CDPP8RG

Mini-Com® DIN Rail Mount Adapter

1-port: CADIN1IW**

*For other lengths, change the length designation (1M) of the part number to the desired length (0.3M, 0.6M, 2M, 3M, 5M, or 10M); to designate color, replace TL (Teal) suffix with BL (Black), RD (Red), or YL (Yellow). For example, the part number for a 2-meter teal patch cord is ISTEPHCH2MTL.

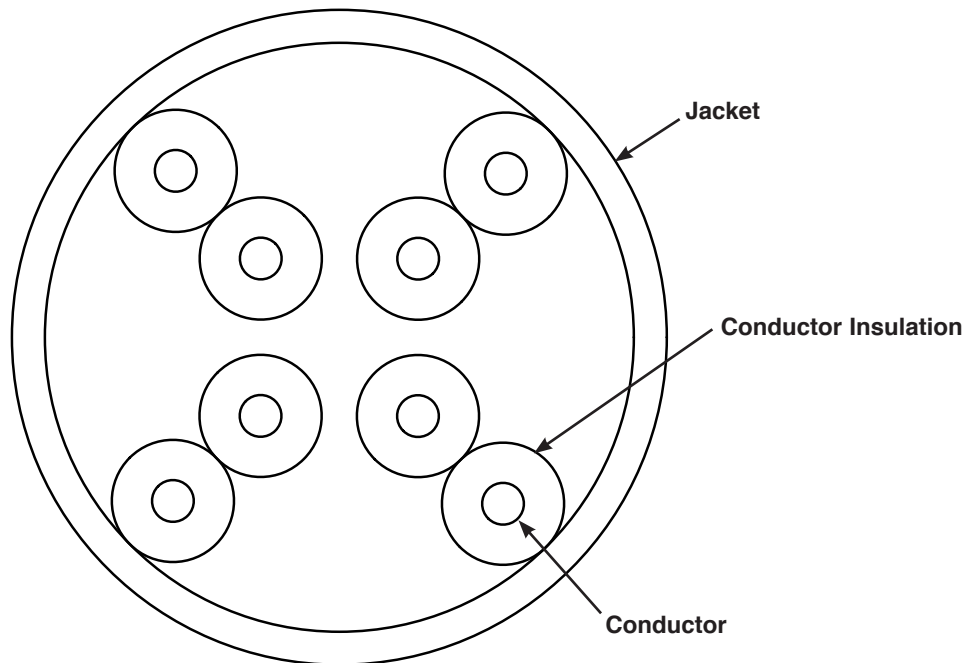
**For standard colors other than Off White, replace IW in part number with BL (Black), EI (Electric Ivory), IG (International Gray), or WH (White).

IndustrialNet™ Category 5e Solid Conductor UTP Copper Cable

additional specifications

Mechanical Test	
Maximum Pulling Force	178N (40 lbf.)
Minimum Bend Radius	31mm (1.2in.)
Electrical Test	
Nominal Velocity of Propagation (NVP)	70%
Operating Voltage, Maximum	80V

IURHT5C04BL Cable Cross-Section



WORLDWIDE SUBSIDIARIES AND SALES OFFICES

PANDUIT US/CANADA
Phone: 800.777.3300

PANDUIT EUROPE LTD.
London, UK
Phone: 44.20.8601.7200

PANDUIT SINGAPORE PTE. LTD.
Republic of Singapore
Phone: 65.6305.7575

PANDUIT JAPAN
Tokyo, Japan
Phone: 81.3.6863.6000

PANDUIT LATIN AMERICA
Guadalajara, Mexico
Phone: 52.33.3777.6000

PANDUIT AUSTRALIA PTY. LTD.
Victoria, Australia
Phone: 61.3.9794.9020

For a copy of Panduit product warranties, log on to www.panduit.com/warranty

For more information

Visit us at www.panduit.com/ia

iai@panduit.com

PANDUIT®

©2017 Panduit Corp.
ALL RIGHTS RESERVED.
COSP405--WW-ENG
3/2017

X-ON Electronics

Largest Supplier of Electrical and Electronic Components

Click to view similar products for [Multi-Conductor Cables](#) category:

Click to view products by [Panduit](#) manufacturer:

Other Similar products are found below :

[8916-GRY-100](#) [8917-BLK-100](#) [8917-GRN/YEL-100](#) [8918-GRN/YEL-100](#) [8920-BRN-1000](#) [8920-RED-1000](#) [89907-LT-DEC/GRY-500](#)
[CR3909-000](#) [CR3927-000](#) [01342.35T.01](#) [01364.35T.01](#) [003201-000](#) [CS2885-000](#) [CS8782-000](#) [CS9912-000](#) [6200UE-NAT-U1000](#) [CTC-](#)
[0062-20-9/5-9](#) [CTC-0062-22-9/5-9](#) [6304FE-877-U500](#) [6309UE-877-1000](#) [6320UE-NAT-U1000](#) [644833-000](#) [6502FE 8771000](#) [6504UE-877-](#)
[U1000](#) [CW9530-000](#) [CX6543-000](#) [CXA-0066-20-4-9CS2973](#) [CXA-0078-16-1-9CS2405](#) [CXA-0078-22-4-9CS2405](#) [CXA-0078-24-4-](#)
[9CS2405](#) [CXA-0140-16-6/9-9CS2405](#) [CY0660-000](#) [706/2R-BLACK-EACH](#) [720451-000](#) [730859-000](#) [MCC-USB-4-250](#) [752687-000](#)
[768146-000](#) [773159-000](#) [7934A-BLK-1000](#) [8125-CHR-100](#) [8164-CHR-1000](#) [820457-000](#) [8205-CHR-1000](#) [8240-BLK-U1000](#) [82723-NAT-](#)
[1000](#) [82907-NAT-500](#) [83003-YEL-500](#) [83005-WHT-500](#) [83006-DK-GRN-100](#)