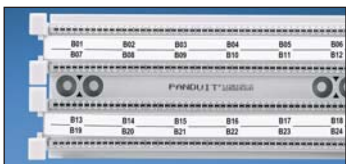


Component Labels for GP6™ PLUS Category 6 Standard Density Bases and GP6™ PLUS Standard Density Tower Kit



Suggested Label Solutions for TIA/EIA-606-A Compliance

| Punchdown System Part Number | Laser/Ink Jet Desktop Printer Label | TDP43ME Thermal Transfer Desktop Printer Label | PanTher™ LS8E Hand-Held Printer Label | Cougar™ LS9 Hand-Held Printer Label |
|------------------------------------|-------------------------------------|--|---------------------------------------|-------------------------------------|
| All GP Kits on pages C1.33 – C1.36 | C788X050Y1J | C788X050Y1T | C788X050Y1C | T100X000VPC-BK‡ |

For complete labeling solutions and product information, reference charts on pages O.1 – O.22.

‡For non-adhesive labeling solution, do not remove liner from label.

GP6™ PLUS Patch Connectors

- Patch into GP6™ PLUS Connecting Blocks
- Field terminable
- Cable clamp on cover facilitates easier wiring
- IDCs provide reliable, gas-tight connections
- Strain relief reduces stress on cable
- Contain two-piece, snap-together housing
- Polarized to prevent reverse installation to connector block
- Clear polycarbonate cover keeps conductors visible after termination
- Cover also provides proper wiring sequence



GPC5E1-XY



GPC5E2-XY

| Part Number | Part Description | Std. Pkg. Qty. | Std. Ctn. Qty. |
|------------------|---|----------------|----------------|
| GPC5E1-XY | Terminates 1-pair 24 AWL solid or stranded cable. | 10 | 100 |
| GPC5E2-XY | Terminates 2-pair 24 AWL solid or stranded cable. | 10 | 100 |

To ensure optimal performance, Panduit recommends use with other Panduit Category 6 components.

X-ON Electronics

Largest Supplier of Electrical and Electronic Components

Click to view similar products for [Wire Identification](#) category:

Click to view products by [Panduit](#) manufacturer:

Other Similar products are found below :

[CU6337-000](#) [CU6342-000](#) [FCA-410-12](#) [11631010](#) [1-1768037-1](#) [1-1768037-2](#) [1-1768050-0](#) [PXLK-VI](#) [Q62184-1](#) [A64304-000](#)

[HK032WE1NF038B](#) [1330-0519-10](#) [1395200-1](#) [1395202-1](#) [DMVF050WE-300S6](#) [D-SCE-1K-2.4-50-4-CS7834](#) [1538738-1](#) [E90935-000](#)

[EC1238-000](#) [EC1465-000](#) [EC1855-000](#) [EC1859-000](#) [EC1863-000](#) [EC5415-000](#) [EC7277-000](#) [EC7352-000](#) [EC7603-000](#) [EC7707-000](#)

[EC7735-000](#) [EC7768-000](#) [EC7828-000](#) [EC7854-000](#) [EC7952-000](#) [EC8128-000](#) [1768037-8](#) [1768041-7](#) [NC-127191-10-9](#)

[HS048WE2NF038B](#) [C03232-000](#) [HTCM-SCE-14-4H-9](#) [HTMS-3/16-9](#) [HT-SCE-1/4-2.0-4](#) [HT-SCE-3/16-2.0-4](#) [HTTMS-1/2-1.50-9](#) [HTTMS-](#)

[CM-1/2-4H-9](#) [HX-SCE-19.0-50-9](#) [HX-SCE-6.4-50-4](#) [C25254-000](#) [CA5939-000](#) [CA7155-000](#)