

NOTES:

1. MATERIAL:
BODY - ALUMINUM, TIN PLATED
SCREW - ALUMINUM, TIN PLATED
2. UL LISTED & CSA CERTIFIED FOR USE UP TO 600V & TEMPERATURE RATED 90°C (AL9CU)
NOTE: LAM2B350-12-3Y IS cULus
3. DUAL RATED FOR USE WITH COPPER OR ALUMINUM STRANDED CODE CONDUCTOR
4. THESE PARTS ARE RoHS COMPLIANT
5. USE OF OXIDE INHIBITING JOINT COMPOUND LIKE PANDUIT CMP-100 RECOMMENDED FOR PAD TO PAD AND CONDUCTOR SURFACES
6. SEE PACKAGING LABEL FOR TIGHTENING TORQUE INFORMATION
7. PKG QTY:
3 = 3
8. ** DENOTES NEMA HOLE SPACING

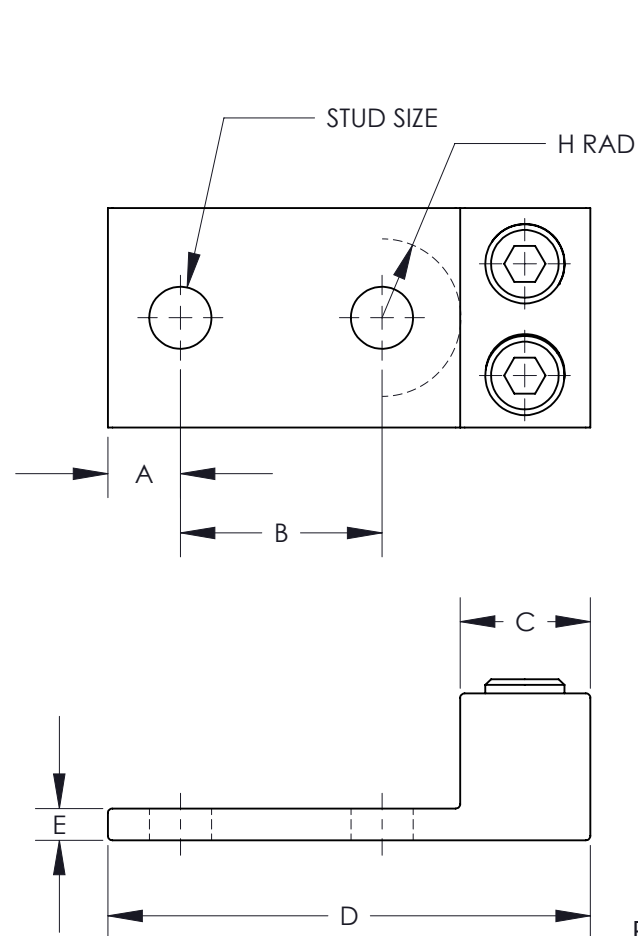


FIGURE 1

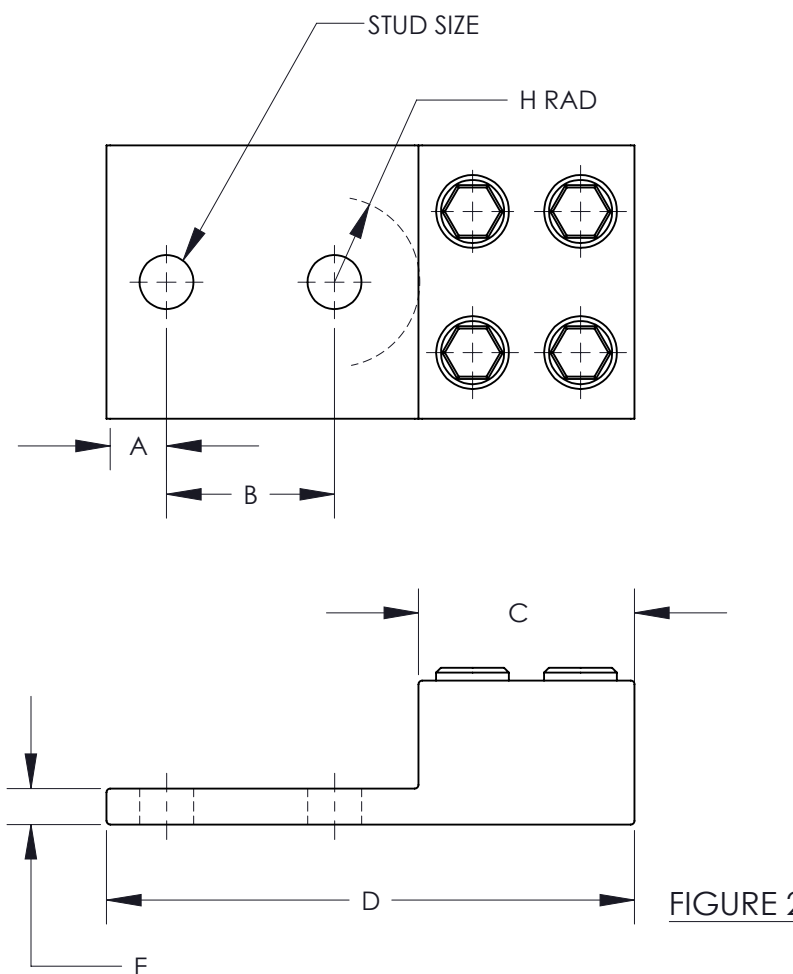


FIGURE 2

PART NUMBER	FIGURE	STUD SIZE	DIMENSIONS - IN [mm] +/- .02 [.5]								WIRE RANGE	HEX KEY*
			A	B	C	D	E	F	G	H		
LAM2B350-12-3Y	1	1/2	0.63 [16.0]	**1.75 [44.5]	1.13 [28.7]	4.19 [106.4]	0.25 [6.4]	1.25 [31.8]	1.94 [49.3]	0.68 [17.3]	350kcmil-6	3/8
LAM2LB600-12-3	2	1/2	0.63 [16.0]	**1.75 [44.5]	2.25 [57.2]	5.50 [139.7]	0.38 [9.7]	1.50 [38.1]	2.85 [72.4]	0.88 [22.4]	600kcmil-2	3/8
LAM2LB1000-12-3	2	1/2	0.63 [16.0]	**1.75 [44.5]	2.75 [69.9]	6.19 [157.2]	.56 [14.2]	1.88 [47.8]	3.48 [88.4]	1.06 [27.0]	1000-500kcmil	1/2

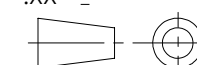
* HEX SIZE MAY DIFFER FROM CHART. DIFFERENCE IN SIZE WILL NOT AFFECT FIT, FORM, OR FUNCTION OF PART



						TITLE LAM2B, LAM2LB SERIES ALUMINUM MECHANICAL LUGS CUSTOMER DRAWING	
						ITEM REVISION NAME N41558BA-C41558/04	
						DATASET FILE NAME C41558/04.SLDDRW	
						UNLESS OTHERWISE SPECIFIED, DIMENSIONAL TOLERANCES ARE: IN [mm] .X ± .XXX ± .XX ± ANGLES ±	
						THIRD ANGLE PROJECTION	
00	2/13	JHNU	JHNU	RGB	REVISED TITLE BLOCK	N41558BA-C41558	
REV	DATE	BY	CHK	APR	DESCRIPTION	ECN	
						DRAWN BY JHNU	
						DATE 2/06	
						CHK JHNU	
						SCALE NONE	
						DRAWING NUMBER C41558_04	
						SHEET 1 OF 1	
						SIZE B	



SEE NOTES



THIRD ANGLE PROJECTION

X-ON Electronics

Largest Supplier of Electrical and Electronic Components

Click to view similar products for [Terminals](#) category:

Click to view products by [Panduit](#) manufacturer:

Other Similar products are found below :

[HT-13-10](#) [71M-250-32-NB](#) [01-2065-1-0216](#) [00581P0075](#) [M10-10RX](#) [M10BCK](#) [60205-1](#) [604200-1](#) [60598-1-CUT-TAPE](#) [60617-1-C](#) [60873-1](#) [M14-516R/SK](#) [M14-6RSX](#) [M18-8FBX](#) [M18-8R/LX](#) [M18BCK](#) [61314-6-C](#) [61-S](#) [61-SN-A](#) [62-NBM-A](#) [63-S](#) [640179-1](#) [640917-2-CUT-TAPE](#) [6501550002](#) [66107-2-C](#) [696683-1](#) [696834-1](#) [696861-1](#) [696931-1](#) [696999-1](#) [M8-516RK](#) [M86700006](#) [MA250DMFMX-A](#) [701-2007](#) [701-2307](#) [701-7761-03](#) [70F-110-32-PB](#) [718-N-A](#) [71M-187-20-NBL](#) [71M-250-32-NBL](#) [72F-187-20-NBL](#) [72M-250-32-NBL](#) [7310](#) [73F-250-32](#) [73F-250-32-NL](#) [F14-10C](#) [F-1M](#) [751-250](#) [76650-5002](#) [76828-149](#)