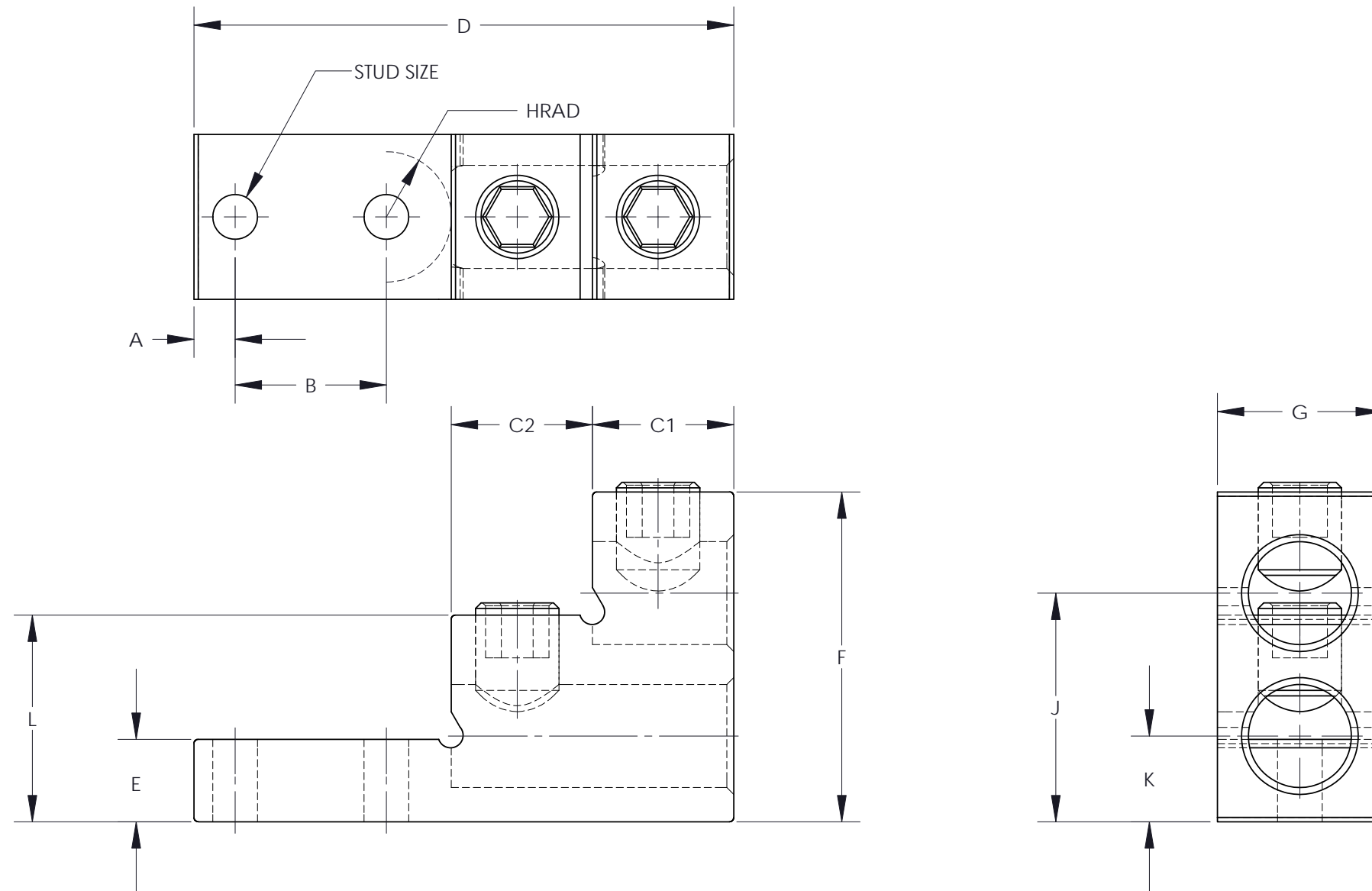


THIS COPY IS PROVIDED ON A RESTRICTED BASIS AND IS NOT TO BE USED IN ANY WAY DETRIMENTAL TO THE INTERESTS OF PANDUIT CORP.

NOTES:

1. MATERIAL:
BODY - ALUMINUM, TIN PLATED
SCREW - ALUMINUM, TIN PLATED
2. UL LISTED & CSA CERTIFIED FOR USE UP TO 600V & TEMPERATURE RATED 90 °C (AL9CU)
3. DUAL RATED FOR USE WITH COPPER OR ALUMINUM STRANDED CODE CONDUCTOR
4. THESE PARTS ARE RoHS COMPLIANT
5. USE OF OXIDE INHIBITING JOINT COMPOUND LIKE PANDUIT CMP-100 RECOMMENDED FOR PAD TO PAD AND CONDUCTOR SURFACES
6. SEE PACKAGING LABEL FOR TIGHTENING TORQUE INFORMATION
7. PKG QTY:
1 = 1



PART NUMBER	STUD SIZE	DIMENSIONS - IN [mm]												WIRE RANGE	HEX KEY*
		A	B	C1	C2	D	E	F	G	H	J	K	L		
LAM2SB600-38-1Y	3/8	.38 [9.5]	1.38 [35.1]	1.38 [35.1]	1.19 [30.2]	4.91 [124.7]	.75 [19.1]	3.00 [76.2]	1.50 [38.1]	.58 [14.7]	2.08 [52.8]	.78 [19.81]	1.88 [47.8]	600kcmil-2	3/8
LAM2SB750-38-1Y	3/8	.38 [9.5]	1.38 [35.1]	1.38 [35.1]	1.19 [30.2]	4.91 [124.7]	.75 [19.1]	3.00 [76.2]	1.50 [38.1]	.58 [14.7]	2.08 [52.8]	.78 [19.81]	1.88 [47.8]	750kcmil-1/0	3/8

* HEX SIZE MAY DIFFER FROM CHART. DIFFERENCE IN SIZE WILL NOT AFFECT FIT, FORM, OR FUNCTION OF PART

							PANDUIT CORP. TINLEY PARK, ILLINOIS	
							LAM2SB SERIES ALUMINUM MECHANICAL LUGS CUSTOMER DRAWING	
03	9/10	JHNU	JHNU	C. REVISED DIMENSIONS FOR LAM2SB600-38-1Y B. REVISED DIMENSIONS FOR LAM2SB750-38-1Y A. REMOVED TIGHTENING TORQUE & WEIGHT COLUMN			N41559BA-C41559	FLD FLD
02	1/07	JHNU	JHNU	ADDED PART WEIGHT COLUMN TO TABLE				
01	3/06	JHNU	LEM	REVISED RoHS NOTE				
00	2/06	JHNU	LEM	DRAWING RELEASED - RoHS COMPLIANT				
REV	DATE	BY	CHK	DESCRIPTION			ECN	-R SUP
							UNLESS OTHERWISE SPECIFIED DIMENSIONAL TOLERANCES ARE: (.X) ± (.XXX) ± (.XX) ± ANGLES ±	
							UNLESS OTHERWISE SPECIFIED, ALL DIMENSIONS ARE GIVEN IN INCHES, THIRD ANGLE PROJECTION	
							DRAWN BY JHNU	MAT'L:
							DATE 2/06	SCALE NONE
							CHK'D	DRAWING NO / CAD FILE C41559_03
								DWG B SIZE

X-ON Electronics

Largest Supplier of Electrical and Electronic Components

Click to view similar products for [Terminals](#) category:

Click to view products by [Panduit](#) manufacturer:

Other Similar products are found below :

[00-054007-01074-6](#) [00-054007-70206-1](#) [00-054007-70210-8](#) [00-054007-70217-7](#) [00-054007-70226-9](#) [00-054007-70228-3](#) [00-054007-70248-1](#) [00-054007-70256-6](#) [00-054007-70301-3](#) [00-054007-70316-7](#) [0-0320562-0](#) [00-054007-49560-4](#) [00-054007-70209-2](#) [00-054007-70225-2](#) [00-054007-70227-6](#) [00-054007-70231-3](#) [00-054007-70241-2](#) [00-054007-70242-9](#) [00-054007-70244-3](#) [00-054007-70246-7](#) [00-054007-70263-4](#) [00-054007-70288-7](#) [00-054007-70290-0](#) [00-054007-70300-6](#) [00-054007-70304-4](#) [01-2065-1-0216](#) [01-2900-1-04412](#) [00581P0075](#) [600TS-10](#) [60205-1](#) [604200-1](#) [605601-1](#) [60598-1-CUT-TAPE](#) [61314-6-C](#) [61810-3](#) [61-S](#) [61-SN](#) [626-0194](#) [62-NBM-A](#) [62-SN](#) [62-SP](#) [63-S](#) [640179-1](#) [M55155/059I03](#) [M55155/079C01](#) [M55155/099H02](#) [M55155/109H01](#) [M55155/109H02](#) [M55155/12XH05](#) [M55155/16XH02](#)