

FIGURE 1

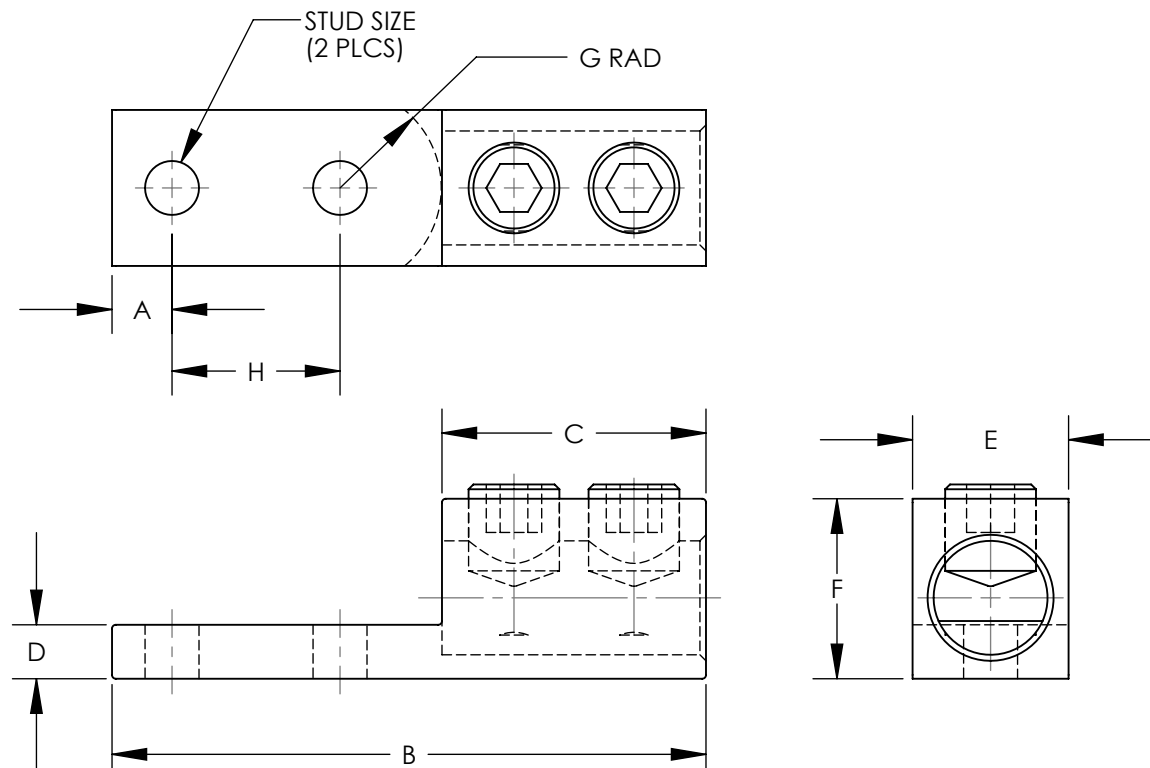


FIGURE 2

NOTES:

1. MATERIAL:  
BODY - ALUMINUM, TIN PLATED  
SCREW - ALUMINUM, TIN PLATED
2. UL LISTED & CSA CERTIFIED FOR USE UP TO 600V & TEMPERATURE RATED 90°C (AL9CU)  
NOTE: LAMB350-12-6Y & LAMB600-12-3Y ARE cULus
3. DUAL RATED FOR USE WITH COPPER OR ALUMINUM STRANDED CODE CONDUCTOR
4. THESE PARTS ARE RoHS COMPLIANT
5. USE OF OXIDE INHIBITING JOINT COMPOUND LIKE PANDUIT CMP-100 RECOMMENDED FOR PAD TO PAD AND CONDUCTOR SURFACES
6. SEE PACKAGING LABEL FOR TIGHTENING TORQUE INFORMATION
7. PKG QTY:  
6 = 6  
3 = 3
8. \*\* DENOTES NEMA HOLE SPACING



PART NUMBER	FIGURE	WIRE RANGE COPPER/ALUMINUM	WIRE STRIP LENGTH IN [mm]	STUD SIZE IN.	DIM A IN [mm]	DIM B IN [mm]	DIM C IN [mm]	DIM D IN [mm]	DIM E IN [mm]	DIM F IN [mm]	DIM G IN [mm]	DIM H IN [mm]	HEX KEY*
LAMB350-12-6Y	1	350 kcmil - 6 AWG	1.13 [28.7]	1/2	.63 [16.0]	4.19 [106.4]	1.13 [28.7]	.25 [6.4]	1.13 [28.7]	1.25 [31.8]	.68 [17.3]	**1.75 [44.5]	5/16
LAMB600-12-3Y	1	600 kcmil - 2 AWG	1.38 [35.1]	1/2	.63 [16.0]	4.69 [119.1]	1.38 [35.1]	.44 [11.2]	1.50 [38.1]	1.56 [39.6]	.93 [23.6]	**1.75 [44.5]	1/2
LAMLB1000-12-3	2	500kcmil - 1000 kcmil	2.75 [69.9]	1/2	.63 [16.0]	6.19 [157.2]	2.75 [69.9]	.56 [14.2]	1.63 [41.4]	1.88 [47.8]	1.06 [27.0]	**1.75 [44.5]	1/2

\* HEX SIZE MAY DIFFER FROM CHART. DIFFERENCE IN SIZE WILL NOT AFFECT FIT, FORM, OR FUNCTION OF PART

C41568\_03

**PANDUIT CORP. TINLEY PARK, ILLINOIS**

LAMB,LAMLB ALUMINUM MECHANICAL LUGS  
CUSTOMER DRAWING

REV	DATE	BY	CHK	DESCRIPTION	ECN	-R	SUP	CHK'D	DATE	DATE	DATE	SCALE	DRAWING NO / CAD FILE	DWG SIZE
03	12/11	JHNU	JHNU	D. REVISED HEX KEY FOR LAMB350-12: 5/16" WAS 3/8"	N41568BB-C41568	RGB	RGB					NONE	C41568	B SIZE
02	9/10	JHNU	JHNU	C. REMOVED INSTALLATION TORQUE COLUMN B. REMOVED LAMLB800-12-3Y A. ADDED LAMLB1000-12-3	N41568BB-C41568	FLD	FLD					NONE	C41568	B SIZE
01	3/06	JHNU	LEM	REVISED RoHS NOTE	PC00334							NONE	C41568	B SIZE
00	2/06	JHNU	LEM	DRAWING RELEASED - RoHS COMPLIANT	PC00299							NONE	C41568	B SIZE

UNLESS OTHERWISE SPECIFIED  
DIMENSIONAL TOLERANCES ARE:  
(.X) ± --- (.XXX) ± ---  
(.XX) ± --- ANGLES ± ---

UNLESS OTHERWISE SPECIFIED,  
ALL DIMENSIONS ARE GIVEN IN  
INCHES, THIRD ANGLE PROJECTION

DRAWN BY  
JHNU  
DATE  
2/06

MAT'L:  
SEE  
NOTE 3  
ABOVE

SCALE  
NONE  
DRAWING NO / CAD FILE  
C41568  
DWG  
B  
SIZE

## X-ON Electronics

Largest Supplier of Electrical and Electronic Components

*Click to view similar products for [Terminals](#) category:*

*Click to view products by [Panduit](#) manufacturer:*

Other Similar products are found below :

[00-054007-01074-6](#) [00-054007-70206-1](#) [00-054007-70210-8](#) [00-054007-70217-7](#) [00-054007-70226-9](#) [00-054007-70228-3](#) [00-054007-70248-1](#) [00-054007-70256-6](#) [00-054007-70301-3](#) [00-054007-70316-7](#) [0-0320562-0](#) [00-054007-49560-4](#) [00-054007-70209-2](#) [00-054007-70225-2](#) [00-054007-70227-6](#) [00-054007-70231-3](#) [00-054007-70241-2](#) [00-054007-70242-9](#) [00-054007-70244-3](#) [00-054007-70246-7](#) [00-054007-70263-4](#) [00-054007-70288-7](#) [00-054007-70290-0](#) [00-054007-70300-6](#) [00-054007-70304-4](#) [01-2065-1-0216](#) [01-2900-1-04412](#) [00581P0075](#) [600TS-10](#) [60205-1](#) [604200-1](#) [605601-1](#) [60598-1-CUT-TAPE](#) [61314-6-C](#) [61810-3](#) [61-S](#) [61-SN](#) [626-0194](#) [62-NBM-A](#) [62-SN](#) [62-SP](#) [63-S](#) [640179-1](#) [M55155/059I03](#) [M55155/079C01](#) [M55155/099H02](#) [M55155/109H01](#) [M55155/109H02](#) [M55155/12XH05](#) [M55155/16XH02](#)