

A. System Overview

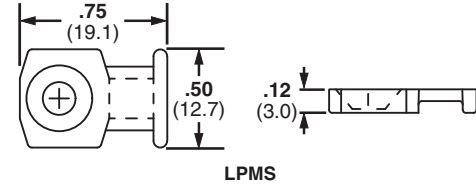
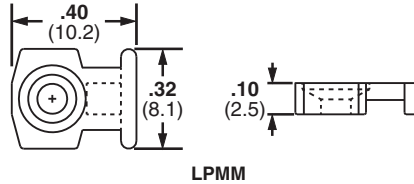
Low Profile Mounts – Screw Applied

- Low profile design keeps bundle close to mounting surface
- Small overall size
- Install with a screw or rivet for a strong, secure installation
- For indoor use only
- Material: Nylon 6.6

B1. Cable Ties

B2. Cable Accessories

B3. Stainless Steel Ties



| Part Number | Used with Cable Ties‡ | Color | Mounting Method | Std. Pkg. Qty. | Std. Ctn. Qty. |
|------------------|-----------------------|---------|---------------------------|----------------|----------------|
| LPMM-S2-C | M | Natural | #2 (M2) Countersunk Screw | 100 | 1000 |
| LPMM-S5-C | M | | #5 (M3) Countersunk Screw | 100 | 1000 |
| LPMS-S8-C | M, I, S | | #8 (M4) Countersunk Screw | 100 | 1000 |

‡Cable tie cross section sizes: M = Miniature, I = Intermediate, and S = Standard.

C1. Wiring Duct

C2. Surface Raceway

C3. Abrasion Protection

C4. Cable Management

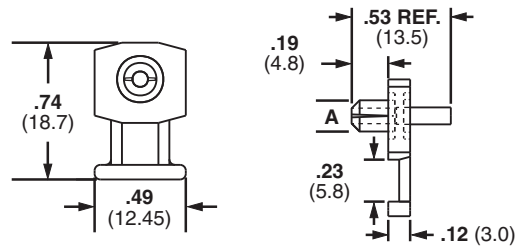
Low Profile Mounts – Push Rivet Applied

- Eliminate screws
- Secure wires to any pre-drilled panel
- Can be installed in any panel thickness
- Low profile design keeps bundle close to mounting surface
- For indoor use only
- Material: Nylon 6.6

D1. Terminals

D2. Power Connectors

D3. Grounding Connectors



| Part Number | Used with Cable Ties‡ | Hole Diameter A | | Color | Mounting Method | Std. Pkg. Qty. | Std. Ctn. Qty. |
|---------------------|-----------------------|-----------------|-----|--------|---------------------|----------------|----------------|
| | | In. | mm | | | | |
| KIMS-H366-C2 | M, I, S | .144 | 3.7 | Red | Integral Push Rivet | 100 | 1000 |
| KIMS-H430-C6 | | .169 | 4.3 | Blue | Integral Push Rivet | 100 | 1000 |
| KIMS-H500-C4 | | .196 | 5.0 | Yellow | Integral Push Rivet | 100 | 1000 |

‡Cable tie cross section sizes: M = Miniature, I = Intermediate, and S = Standard.

E1. Labeling Systems

E2. Labels

E3. Pre-Printed & Write-On Markers

E4. Permanent Identification

E5. Lockout/Tagout & Safety Solutions

F. Index

X-ON Electronics

Largest Supplier of Electrical and Electronic Components

Click to view similar products for [Cable Tie Mounts](#) category:

Click to view products by [Panduit](#) manufacturer:

Other Similar products are found below :

[3-350087-0](#) [CTB75X75BKA-C](#) [561-EZAB580T](#) [561-EZS375B40](#) [561-TA250125](#) [08443-0](#) [10035-0](#) [561-TA00600](#) [1689174-1](#) [08445-0](#)
[10351-0](#) [561-TA250125B](#) [20015-0](#) [10350-0](#) [10029-0](#) [08484-0](#) [08446-0](#) [08318-0](#) [PAM075NY-A-C](#) [MTH1-3](#) [10044](#) [151-01802](#) [151-11319](#)
[151-11819](#) [PLWP1SB-D](#) [PLWP1M-C](#) [PLWP2SA-D](#) [PLWP2SB-D](#) [PLWP2S-C](#) [PLWP1S-D](#) [PLWP1M-D](#) [TA1S8-C](#) [ABM3H-A-L](#) [ABM3H-](#)
[AT-T0](#) [EMS-A-C0](#) [EMSK3-1-3-0](#) [10079](#) [10030](#) [151-10930](#) [151-10920](#) [3590](#) [151-28320](#) [151-28349](#) [151-28530](#) [151-10914](#) [151-10904](#) [151-](#)
[10915](#) [151-10916](#) [151-10906](#) [115-06960](#)