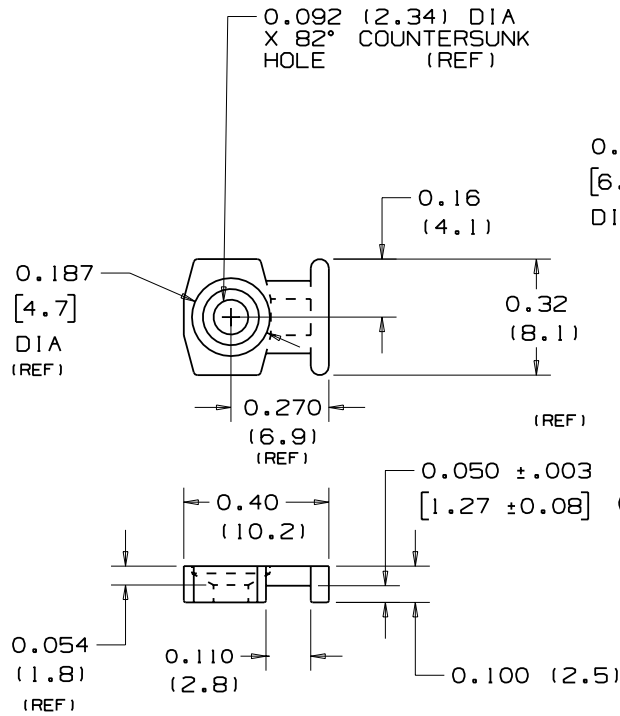
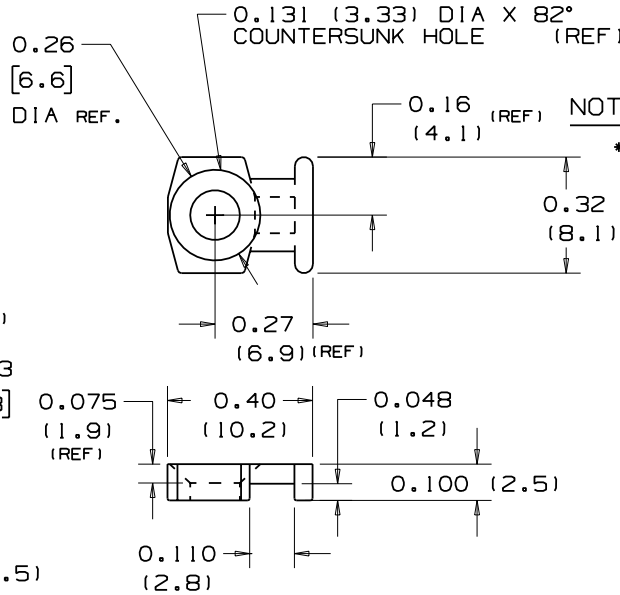


THIS COPY IS PROVIDED ON A RESTRICTED BASIS AND IS NOT TO BE USED IN ANY WAY DETRIMENTAL TO THE INTERESTS OF PANDUIT CORP.

PANDUIT PART NO. *	USE WITH THESE CABLE TIE CROSS-SECTIONS	WEIGHT lbs/100pcs. (g)	SCREW OR RIVET SIZE
LPMM-S2	MINIATURE	0.031 (14.1)	0.088(2.2) DIA. RIVET OR #2 (M2) SCREW
LPMM-S5	MINIATURE	0.025 (11.4)	#5 (M3) SCREW



LPMM-S2



LPMM-S5

NOTES:

* 1) SEE CURRENT PRICE SHEET FOR PART NUMBER SUFFIX DESIGNATION FOR PACKAGE SIZE AND PART COLOR.



FULL SIZE

DIMENSIONS IN PARENTHESES ARE IN METRIC UNITS.

CAD FILENAME/LAYERS G00239CR_PB_LPMM_04



CORP. TINLEY PARK, ILLINOIS

LOW PROFILE MOUNTS LPMM-

REV	DATE	BY	CHK	DESCRIPTION	ECN	R	CUST	SUP
4	3/7/06	JAD		REVISED AND UPDATE DIMENSION, ADD .xxx TOL	GB0239CR	4		
3	9/11/03	JAD		REVISED PICTORIALLY, RELOCATED DIMENSIONS	GB0239CR	3		
2	6/27/01	LGG		ADDED (REF) TO DIM AND UPDATED FOR WEB	GB0239CR	2		
1	8/10/00	JAD		ADDED (REF) TO 10 DIMENSIONS, DELETED .020 (1.51) DIM LPMM-S2	GB0239CR	1		
R	5-15-95	MJK		Ⓐ ADDED COUNTERBORE DIMENSIONS REVISED & REDRAWN (SS-5782) TO CAD FORMAT	GB0239CR	R		

UNLESS OTHERWISE SPECIFIED, DIMENSIONAL TOLERANCES ARE: (.X) ± .0005 (.XXX) ± .005 (.13) (.XX) ± .020 (.51) ANGLES ± .0005		UNLESS OTHERWISE SPECIFIED, ALL DIMENSIONS ARE GIVEN IN INCHES, THIRD ANGLE PROJECTION.	
DRAWN BY MJK	MAT'L: NYLON 6/6		SCALE 2:1
DATE 5-15-95			DRAWING NO. GB0239CR
CHK'D			DWG A SIZE

X-ON Electronics

Largest Supplier of Electrical and Electronic Components

Click to view similar products for [Cable Tie Mounts](#) category:

Click to view products by [Panduit](#) manufacturer:

Other Similar products are found below :

[3-350087-0](#) [CTB75X75BKA-C](#) [561-EZAB580T](#) [561-EZS375B40](#) [561-TA250125](#) [08443-0](#) [10035-0](#) [561-TA00600](#) [1689174-1](#) [08445-0](#)
[10351-0](#) [561-TA250125B](#) [20015-0](#) [10350-0](#) [10029-0](#) [08484-0](#) [08446-0](#) [08318-0](#) [PAM075NY-A-C](#) [MTH1-3](#) [10044](#) [151-01802](#) [151-11319](#)
[151-11819](#) [PLWP1SB-D](#) [PLWP1M-C](#) [PLWP2SA-D](#) [PLWP2SB-D](#) [PLWP2S-C](#) [PLWP1S-D](#) [PLWP1M-D](#) [TA1S8-C](#) [ABM3H-A-L](#) [ABM3H-](#)
[AT-T0](#) [EMS-A-C0](#) [EMSK3-1-3-0](#) [10079](#) [151-10930](#) [151-10920](#) [3590](#) [151-28320](#) [151-28349](#) [151-28530](#) [151-10914](#) [151-10904](#) [151-10915](#)
[151-10916](#) [151-10906](#) [115-06960](#) [06297](#)