

PanTher™ LS8E and LS8EQ Hand-Held Thermal Transfer Printers

The PanTher™ LS8E and LS8EQ Hand-Held Thermal Transfer Printers produce high-quality, industrial labels on a wide variety of label materials for electrical and network applications such as wire/cable, components, safety, and facility identification.

A partial cut feature provides the flexibility to create tear-apart labels for quicker installation. The printers use label cassettes that contain an integrated memory device for automatic formatting, recall of last legend used, and the number of labels remaining in the cassette. These fast-loading P1™ label cassettes include both label material and ribbon to make changing labels easy.

Part of the complete line of identification solutions from Panduit, the PanTher™ LS8E and LS8EQ Printers are compact, rugged, and easy to use on-site to meet the demanding requirements of electrical and network users, while delivering productivity gains throughout the physical infrastructure.



Key Features

Benefits

| | |
|--|--|
| QWERTY keypad <small>PATENTED</small> | Innovative design delivers faster text entry and label design for enhanced productivity |
| Label cut-to-length functionality | Eliminates label waste and time associated with trimming labels |
| Cassettes with automatic label recognition | Label cassettes contain an integrated memory device for automatic formatting, recall of last legend used, and number of labels remaining in the cassette |
| Fast-loading label cassette | Contains both label material and ribbon to make changing labels easy |
| Unique cutter design allows full or partial label cutting | Flexibility to create individually cut labels or a strip of tear-apart labels for quicker installation |
| Market specific labeling tools | Simplify label creation for network components, panel building, and construction and maintenance |
| USB interface | Allows importing data, system upgrades, and printing labels from a wireless laptop or desktop computer |

Label Types

| |
|-----------------------------------|
| Self-Laminating Labels |
| Turn-Tell® Labels |
| Marker Plates |
| Flag Labels |
| Die-Cut Heat Shrink Labels |
| Die-Cut Vinyl Cloth Labels |
| Die-Cut Nylon Cloth Labels |
| Die-Cut Component Labels |

Label Types

| |
|---|
| Continuous Heat Shrink Labels |
| Continuous Vinyl Cloth Labels |
| Continuous Nylon Cloth Labels |
| Continuous Terminal Block Labels |
| Continuous Reflective Tapes |
| Continuous Tapes |
| Ultimate ID® Network Labels |

PanTher™ LS8E and LS8EQ Ordering Information



LS8EQ



LS8E

| Part Number | Part Description | Std. Pkg. Qty. |
|----------------------|---|----------------|
| LS8EQ-KIT-ACS | Includes LS8EQ printer with QWERTY keypad, one cassette of S100X150VAC self-laminating labels, six AA alkaline batteries, LS8E-ACS, LS8-CASE, LS8-PCKIT, LS8-IB, LS8-WS, quick reference card, and operator's manual. | 1 |
| LS8EQ-KIT | Includes LS8EQ printer with QWERTY keypad, one cassette of S100X150VAC self-laminating labels, six AA alkaline batteries, LS8-CASE, LS8-PCKIT, LS8-IB, LS8-WS, quick reference card, and operator's manual. | 1 |
| LS8EQ | Includes LS8EQ printer with QWERTY keypad, one cassette of S100X150VAC self-laminating labels, six AA alkaline batteries, and quick reference card. | 1 |
| LS8E-KIT-ACS | Includes LS8E printer, one cassette of S100X150VAC self-laminating labels, six AA alkaline batteries, LS8E-ACS, LS8-CASE, LS8-PCKIT, LS8-IB, LS8-WS, quick reference card, and operator's manual. | 1 |
| LS8E-KIT | Includes LS8E printer, one cassette of S100X150VAC self-laminating labels, six AA alkaline batteries, LS8-CASE, LS8-PCKIT, LS8-IB, LS8-WS, quick reference card, and operator's manual. | 1 |
| LS8E | Includes LS8E printer, one cassette of S100X150VAC self-laminating labels, six AA alkaline batteries, and quick reference card. | 1 |

Accessories for LS8E and LS8EQ printers

| | | |
|------------------|---|---|
| LS8E-ACS* | 120 VAC power adapter for North America. | 1 |
| LS8-CASE | Rigid carrying case. | 1 |
| LS8-PCKIT | Includes USB cable and PC interface software for importing data, system upgrades, or printing from a wireless laptop or desktop computer. | 1 |
| LS8-IB | Protective impact bumper. | 1 |
| LS8-WS | Wrist strap. | 1 |
| LS8-CLN | Cleaning kit. | 1 |

*Cannot be used to charge batteries. Other adapters available, replace S with A (Australia), C (China), E (Europe), and U (UK).

Self-Laminating Label Cassettes



- Fast loading P1™ Label Cassette includes both label material and ribbon to make changing labels easy
- Self-laminating adhesive labels for wire/cable identification include a colored print-on area and clear overlamine



Self-Laminating Vinyl (VA, VB, VD, VH, VI)

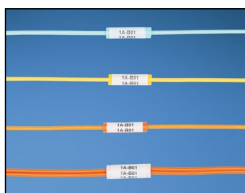


40°F to 150°F (-40°C to 66°C)

| Part Number | Print-On Area color | Width | | Length | | Print-On Area Height | | Min. Cable O.D. | | Max. Cable O.D. | | Wire/Cable Size Range | Labels Per Cassette | Std. Pkg. Qty. | Std. Ctn. Qty. |
|-------------|---------------------|-------|------|--------|-------|----------------------|------|-----------------|------|-----------------|------|-----------------------|---------------------|----------------|----------------|
| | | In. | mm | In. | mm | In. | mm | In. | mm | In. | mm | | | | |
| S050X075VAC | White | 0.50 | 12.7 | 0.75 | 19.1 | 0.25 | 6.4 | 0.08 | 2.0 | 0.16 | 4.0 | 18 – 14 AWG | 450 | 1 | 10 |
| S050X125VAC | White | 0.50 | 12.7 | 1.25 | 31.8 | 0.38 | 9.7 | 0.12 | 3.1 | 0.28 | 7.0 | 12 – 10 AWG | 225 | 1 | 10 |
| S050X150VAC | White | 0.50 | 12.7 | 1.50 | 38.1 | 0.50 | 12.7 | 0.16 | 4.0 | 0.32 | 8.1 | Cat. 5e/Cat. 6 | 200 | 1 | 10 |
| S075X075VAC | White | 0.75 | 19.1 | 0.75 | 19.1 | 0.25 | 6.4 | 0.08 | 2.0 | 0.16 | 4.0 | 18 – 14 AWG | 350 | 1 | 10 |
| S075X100VAC | White | 0.75 | 19.1 | 1.00 | 25.4 | 0.38 | 9.7 | 0.12 | 3.1 | 0.16 | 4.0 | 12 – 10 AWG | 275 | 1 | 10 |
| S075X125VAC | White | 0.75 | 19.1 | 1.25 | 31.8 | 0.38 | 9.7 | 0.12 | 3.1 | 0.28 | 7.0 | 12 – 10 AWG | 225 | 1 | 10 |
| S075X150VAC | White | 0.75 | 19.1 | 1.50 | 38.1 | 0.50 | 12.7 | 0.16 | 4.0 | 0.32 | 8.1 | Cat. 5e/Cat. 6 | 200 | 1 | 10 |
| S100X075VAC | White | 1.00 | 25.4 | 0.75 | 19.1 | 0.25 | 6.4 | 0.08 | 2.0 | 0.16 | 4.0 | 18 – 14 AWG | 350 | 1 | 10 |
| S100X125VAC | White | 1.00 | 25.4 | 1.25 | 31.8 | 0.38 | 9.7 | 0.12 | 3.1 | 0.28 | 7.0 | 12 – 10 AWG | 225 | 1 | 10 |
| S100X150VAC | White | 1.00 | 25.4 | 1.50 | 38.1 | 0.50 | 12.7 | 0.16 | 4.0 | 0.32 | 8.1 | Cat. 5e/Cat. 6 | 200 | 1 | 10 |
| S100X150VBC | TIA Blue | 1.00 | 25.4 | 1.50 | 38.1 | 0.50 | 12.7 | 0.16 | 4.0 | 0.32 | 8.1 | Cat. 5e/Cat. 6 | 200 | 1 | 10 |
| S100X150VDC | TIA Green | 1.00 | 25.4 | 1.50 | 38.1 | 0.50 | 12.7 | 0.16 | 4.0 | 0.32 | 8.1 | Cat. 5e/Cat. 6 | 200 | 1 | 10 |
| S100X150VHC | TIA Red | 1.00 | 25.4 | 1.50 | 38.1 | 0.50 | 12.7 | 0.16 | 4.0 | 0.32 | 8.1 | Cat. 5e/Cat. 6 | 200 | 1 | 10 |
| S100X150VIC | TIA Yellow | 1.00 | 25.4 | 1.50 | 38.1 | 0.50 | 12.7 | 0.16 | 4.0 | 0.32 | 8.1 | Cat. 5e/Cat. 6 | 200 | 1 | 10 |
| S100X225VAC | White | 1.00 | 25.4 | 2.25 | 57.2 | 0.75 | 19.1 | 0.24 | 6.1 | 0.48 | 12.2 | 8 – 4 AWG | 125 | 1 | 10 |
| S100X225VBC | TIA Blue | 1.00 | 25.4 | 2.25 | 57.2 | 0.75 | 19.1 | 0.24 | 6.1 | 0.48 | 12.2 | 8 – 4 AWG | 125 | 1 | 10 |
| S100X225VDC | TIA Green | 1.00 | 25.4 | 2.25 | 57.2 | 0.75 | 19.1 | 0.24 | 6.1 | 0.48 | 12.2 | 8 – 4 AWG | 125 | 1 | 10 |
| S100X225VHC | TIA Red | 1.00 | 25.4 | 2.25 | 57.2 | 0.75 | 19.1 | 0.24 | 6.1 | 0.48 | 12.2 | 8 – 4 AWG | 125 | 1 | 10 |
| S100X225VIC | TIA Yellow | 1.00 | 25.4 | 2.25 | 57.2 | 0.75 | 19.1 | 0.24 | 6.1 | 0.48 | 12.2 | 8 – 4 AWG | 125 | 1 | 10 |
| S100X400VAC | White | 1.00 | 25.4 | 4.00 | 101.6 | 1.00 | 25.4 | 0.32 | 8.1 | 0.95 | 24.3 | 2 – 1 AWG | 75 | 1 | 10 |
| S100X650VAC | White | 1.00 | 25.4 | 6.50 | 165.1 | 1.50 | 38.1 | 0.48 | 12.2 | 1.59 | 40.4 | 1/0-250 MCM | 50 | 1 | 10 |

Order number of cassettes required.

LabelCore™ Fiber Optic Cable Identification System



- Provides a larger labeling surface on small fiber cables and allows legends to be clearly seen
- Sleeve is made of flexible PVC material
- Locate sleeve on straight section of cable at least 2 inches from fiber boot

| Part Number | Part Description | Std. Pkg. Qty. | Std. Ctn. Qty. |
|-------------|---|----------------|----------------|
| NWSLC-2Y-AQ | Aqua, cable identification sleeve for 2mm simplex cable, 1 inch long. | 100 | 1000 |
| NWSLC-2Y | Yellow, cable identification sleeve for 2mm simplex cable, 1 inch long. | 100 | 1000 |
| NWSLC-3Y | Orange, cable identification sleeve for 3mm simplex cable, 1 inch long. | 100 | 1000 |
| NWSLC-7Y | White, cable identification sleeve for 3mm duplex fiber cable, 1 inch long. | 100 | 1000 |

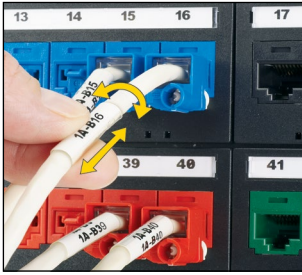
Order number of sleeves required.

Self-Laminating Label Cassettes for Use with LabelCore™ Fiber Optic Cable Identification System

| Part Number | Part Description | Width | | Length | | Print-On Area Height | | Min. Cable O.D. | | Max. Wire O.D. | | Std. Pkg. Qty. | Std. Ctn. Qty. |
|-------------|--|-------|------|--------|------|----------------------|------|-----------------|-----|----------------|-----|----------------|----------------|
| | | In. | mm | In. | mm | In. | mm | In. | mm | In. | mm | | |
| S100X160VAC | White print-on, self-laminating vinyl label 175/cassette. For use with NWSLC-2Y, NWSLC-3Y, and NWSLC-2Y-AQ | 1.00 | 25.4 | 1.60 | 40.6 | 0.80 | 20.3 | 0.25 | 6.4 | 0.25 | 6.4 | 1 | 10 |
| S100X220VAC | White print-on, self-laminating vinyl label, 125/cassette. For use with NWSLC-7Y. | 1.00 | 25.4 | 2.20 | 55.9 | 1.10 | 27.9 | 0.35 | 8.9 | 0.35 | 8.9 | 1 | 10 |

Order number of cassettes required.

Turn-Tell® Label Cassettes



- Fast-loading P1™ Label Cassettes includes both label material and ribbon to make changing labels easy
- Innovative label design allows labels to rotate for visibility from any angle, and for repositioning on the wire/cable to align legends and improve aesthetics
- Labels can be easily installed on existing terminated wires and assemblies without disconnecting the wires/cables



Polymer Film (V1, V2, V3, V7, V8)



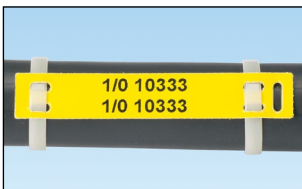
-40°F to 200°F (-40°C to 93°C)

| Part Number | Part Description | Color | Width | | Length | | Print-On Area Height | | Min. Cable O.D. | | Max. Wire O.D. | | Std. Pkg. Qty. | Std. Ctn. Qty. |
|-------------|--|------------|-------|------|--------|------|----------------------|------|-----------------|-----|----------------|-----|----------------|----------------|
| | | | In. | mm | In. | mm | In. | mm | In. | mm | In. | mm | | |
| R100X075V1C | White print-on area, 18 – 14 AWG wire/cable, 150/cassette. | White | 1.00 | 25.4 | 0.75 | 19.1 | 0.25 | 6.4 | 0.12 | 3.1 | 0.16 | 4.1 | 1 | 10 |
| R100X125V1C | White print-on area, 12 – 10 AWG wire/cable, Cat. 3 UTP cable, 100/cassette. | White | 1.00 | 25.4 | 1.25 | 31.8 | 0.38 | 9.7 | 0.16 | 4.1 | 0.22 | 5.6 | 1 | 10 |
| R100X150V1C | White print-on area, 10 – 6 AWG wire/cable, Cat. 5e/6/6A UTP and Cat. 5e FTP cable, 100/cassette. | White | 1.00 | 25.4 | 1.50 | 38.1 | 0.50 | 12.7 | 0.22 | 5.6 | 0.28 | 7.1 | 1 | 10 |
| R100X150V2C | Blue print-on area, 10 – 6 AWG wire/cable, Cat. 5e/6/6A UTP and Cat. 5e FTP cable, 100/cassette. | TIA Blue | 1.00 | 25.4 | 1.50 | 38.1 | 0.50 | 12.7 | 0.22 | 5.6 | 0.28 | 7.1 | 1 | 10 |
| R100X150V3C | Green print-on area, 10 – 6 AWG wire/cable, Cat. 5e/6/6A UTP and Cat. 5e FTP cable, 100/cassette. | TIA Green | 1.00 | 25.4 | 1.50 | 38.1 | 0.50 | 12.7 | 0.22 | 5.6 | 0.28 | 7.1 | 1 | 10 |
| R100X150V7C | Red print-on area, 10 – 6 AWG wire/cable, Cat. 5e/6/6A UTP and Cat. 5e FTP cable, 100/cassette. | TIA Red | 1.00 | 25.4 | 1.50 | 38.1 | 0.50 | 12.7 | 0.22 | 5.6 | 0.28 | 7.1 | 1 | 10 |
| R100X150V8C | Yellow print-on area, 10 – 6 AWG wire/cable, Cat. 5e/6/6A UTP and Cat. 5e FTP cable, 100/cassette. | TIA Yellow | 1.00 | 25.4 | 1.50 | 38.1 | 0.50 | 12.7 | 0.22 | 5.6 | 0.28 | 7.1 | 1 | 10 |
| R100X225V1C | White print-on area, 8 – 4 AWG wire/cable, Cat. 6 FTP and Cat. 6A cable, 75/cassette. | White | 1.00 | 25.4 | 2.25 | 57.2 | 0.75 | 19.1 | 0.28 | 7.1 | 0.39 | 9.9 | 1 | 10 |
| R100X225V2C | Blue print-on area, 8 – 4 AWG wire/cable, Cat. 6 FTP and Cat. 6A cable, 75/cassette. | TIA Blue | 1.00 | 25.4 | 2.25 | 57.2 | 0.75 | 19.1 | 0.28 | 7.1 | 0.39 | 9.9 | 1 | 10 |
| R100X225V3C | Green print-on area, 8 – 4 AWG wire/cable, Cat. 6 FTP and Cat. 6A cable, 75/cassette. | TIA Green | 1.00 | 25.4 | 2.25 | 57.2 | 0.75 | 19.1 | 0.28 | 7.1 | 0.39 | 9.9 | 1 | 10 |
| R100X225V7C | Red print-on area, 8 – 4 AWG wire/cable, Cat. 6 FTP and Cat. 6A cable, 75/cassette. | TIA Red | 1.00 | 25.4 | 2.25 | 57.2 | 0.75 | 19.1 | 0.28 | 7.1 | 0.39 | 9.9 | 1 | 10 |
| R100X225V8C | Yellow print-on area, 8 – 4 AWG wire/cable, Cat. 6 FTP and Cat. 6A cable, 75/cassette. | TIA Yellow | 1.00 | 25.4 | 2.25 | 57.2 | 0.75 | 19.1 | 0.28 | 7.1 | 0.39 | 9.9 | 1 | 10 |

Order number of cassettes required.

Marker Plate Label Cassettes

- Fast-loading P1™ Label Cassette includes both label material and ribbon to make changing labels easy
- Marker plates are designed for use on larger diameter wire/cables and may be applied after all terminations are complete
- Meets requirements for MIL-STD-202F, Notice 12 Method 215J



Polyester/Polyolefin (Y6, Y7)



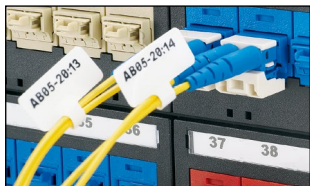
-58°F to 221°F (-50°C to 105°C)

| Part Number | Color | Width | | Length | | Print-On Area Width | | Recommended Cable Tie | | Labels Per Cassette | Std. Pkg. Qty. | Std. Ctn. Qty. |
|-------------|--------|-------|------|--------|------|---------------------|------|-----------------------|------------|---------------------|----------------|----------------|
| | | In. | mm | In. | mm | In. | mm | Vertical | Horizontal | | | |
| M300X050Y6C | Yellow | 3.00 | 76.2 | 0.50 | 12.7 | 1.80 | 45.7 | PLT2.5I-C | PLT2.5I-C | 50 | 1 | 10 |
| M300X050Y7C | White | 3.00 | 76.2 | 0.50 | 12.7 | 1.80 | 45.7 | PLT2.5I-C | PLT2.5I-C | 50 | 1 | 10 |

Order number of cassettes required.

Flag Label Cassettes

- Fast-loading P1™ Label Cassette includes both label material and ribbon to make changing labels easy
- Provides larger label area for small cables
- Innovative design allows flag labels to be applied in either adhesive or non-adhesive orientations



Polyester (AJ)

-40°F to 302°F (-40°C to 150°C)

| Part Number | Color | Width | | Length | | Min. Cable O.D. | | Max. Wire O.D. | | Wire Range | Labels Per Cassette | Std. Pkg. Qty. | Std. Ctn. Qty. |
|-------------|-------|-------|------|--------|------|-----------------|-----|----------------|-----|-------------|---------------------|----------------|----------------|
| | | In. | mm | In. | mm | In. | mm | In. | mm | | | | |
| F100X150AJC | White | 1.00 | 25.4 | 1.50 | 38.1 | 0.12 | 3.1 | 0.20 | 5.1 | 12 – 10 AWG | 200 | 1 | 10 |

Non-Laminated Label Cassettes

- Fast-loading P1™ Label Cassette includes both label material and ribbon to make changing labels easy
- Non-laminated adhesive labels for wire/cable identification
- Vinyl cloth labels can be repositioned or reused



Vinyl Cloth (CB)

50°F to 170°F (10°C to 77°C)

Nylon Cloth (C1, C2)

-40°F to 285°F (-40°C to 140°C)

Die-Cut Vinyl Cloth Labels

| Part Number | Color | Width | | Length | | Min. Cable O.D. | | Max. Wire O.D. | | Wire Range | Labels Per Cassette | Std. Pkg. Qty. | Std. Ctn. Qty. |
|--------------|-------|-------|------|--------|------|-----------------|-----|----------------|------|-------------|---------------------|----------------|----------------|
| | | In. | mm | In. | mm | In. | mm | In. | mm | | | | |
| N050X075CBC* | White | 0.50 | 12.7 | 0.75 | 19.1 | 0.12 | 3.1 | 0.16 | 4.1 | 12 – 10 AWG | 125 | 1 | 10 |
| N100X075CBC | White | 1.00 | 25.4 | 0.75 | 19.1 | 0.12 | 3.1 | 0.16 | 4.1 | 12 – 10 AWG | 125 | 1 | 10 |
| N050X150CBC* | White | 0.50 | 12.7 | 1.50 | 38.1 | 0.24 | 6.1 | 0.40 | 10.2 | 8 – 2 AWG | 75 | 1 | 10 |
| N100X125CBC* | White | 1.00 | 25.4 | 1.25 | 31.8 | 0.20 | 5.1 | 0.32 | 8.1 | 10 – 6 AWG | 75 | 1 | 10 |
| N100X150CBC | White | 1.00 | 25.4 | 1.50 | 38.1 | 0.24 | 6.1 | 0.40 | 10.2 | 8 – 2 AWG | 75 | 1 | 10 |
| N100X175CBC* | White | 1.00 | 25.4 | 1.75 | 44.5 | 0.28 | 7.1 | 0.48 | 12.2 | 6 – 1 AWG | 50 | 1 | 10 |

*Perforated labels can be used as full-sized or half-sized markers.
Order number of cassettes required.

Continuous Vinyl Cloth Tape

| Part Number | Color | Height | | Length | | Std. Pkg. Qty. | Std. Ctn. Qty. |
|----------------|-------|--------|------|--------|-----|----------------|----------------|
| | | In. | mm | Ft. | m | | |
| T050X000CBC-BK | White | 0.50 | 12.7 | 12.5 | 3.8 | 1 | 10 |
| T100X000CBC-BK | White | 1.00 | 25.4 | 12.5 | 3.8 | 1 | 10 |

Order number of cassettes required.

Die-Cut Nylon Cloth Labels

| Part Number | Color | Width | | Length | | Min. Cable O.D. | | Max. Wire O.D. | | Wire Range | Labels Per Cassette | Std. Pkg. Qty. | Std. Ctn. Qty. |
|-------------|--------|-------|------|--------|------|-----------------|-----|----------------|-----|-------------|---------------------|----------------|----------------|
| | | In. | mm | In. | mm | In. | mm | In. | mm | | | | |
| N050X075C1C | White | 0.50 | 12.7 | 0.75 | 19.1 | 0.12 | 3.1 | 0.16 | 4.1 | 12 – 10 AWG | 250 | 1 | 10 |
| N050X075C2C | Yellow | 0.50 | 12.7 | 0.75 | 19.1 | 0.12 | 3.1 | 0.16 | 4.1 | 12 – 10 AWG | 250 | 1 | 10 |
| N050X125C1C | White | 0.50 | 12.7 | 1.25 | 31.8 | 0.20 | 5.1 | 0.32 | 8.1 | 10 – 6 AWG | 150 | 1 | 10 |
| N050X125C2C | Yellow | 0.50 | 12.7 | 1.25 | 31.8 | 0.20 | 5.1 | 0.32 | 8.1 | 10 – 6 AWG | 150 | 1 | 10 |
| N100X075C1C | White | 1.00 | 25.4 | 0.75 | 19.1 | 0.12 | 3.1 | 0.16 | 4.1 | 12 – 10 AWG | 250 | 1 | 10 |
| N100X075C2C | Yellow | 1.00 | 25.4 | 0.75 | 19.1 | 0.12 | 3.1 | 0.16 | 4.1 | 12 – 10 AWG | 250 | 1 | 10 |
| N100X125C1C | White | 1.00 | 25.4 | 1.25 | 31.8 | 0.20 | 5.1 | 0.32 | 8.1 | 10 – 6 AWG | 150 | 1 | 10 |
| N100X125C2C | Yellow | 1.00 | 25.4 | 1.25 | 31.8 | 0.20 | 5.1 | 0.32 | 8.1 | 10 – 6 AWG | 150 | 1 | 10 |

Order number of cassettes required.

Non-Laminated Label Cassettes (continued)

Continuous Nylon Cloth Tape

| Part Number | Color | Height | | Length | | Std. Pkg. Qty. | Std. Ctn. Qty. |
|----------------|--------|--------|------|--------|-----|----------------|----------------|
| | | In. | mm | Ft. | m | | |
| T038X000C1C-BK | White | 0.38 | 9.7 | 18.0 | 5.5 | 1 | 10 |
| T038X000C2C-BK | Yellow | 0.38 | 9.7 | 18.0 | 5.5 | 1 | 10 |
| T050X000C1C-BK | White | 0.50 | 12.7 | 18.0 | 5.5 | 1 | 10 |
| T050X000C2C-BK | Yellow | 0.50 | 12.7 | 18.0 | 5.5 | 1 | 10 |
| T075X000C1C-BK | White | 0.75 | 19.1 | 18.0 | 5.5 | 1 | 10 |
| T075X000C2C-BK | Yellow | 0.75 | 19.1 | 18.0 | 5.5 | 1 | 10 |
| T100X000C1C-BK | White | 1.00 | 25.4 | 18.0 | 5.5 | 1 | 10 |
| T100X000C2C-BK | Yellow | 1.00 | 25.4 | 18.0 | 5.5 | 1 | 10 |

Order number of cassettes required.

Heat Shrink Label Cassettes

- Fast-loading P1™ Label Cassette includes both label material and ribbon to make changing labels easy
- Meets print performance requirements of MIL-M-81531 and MIL-STD-202G Method 215K, Solution A, C, and D
- Meets UL Standard 224 for flammability
- Shrink ratio 3:1
- Non-adhesive flattened heat shrinkable polyolefin for wire/cable identification



Heat Shrinkable Polyolefin (H1, H2)



-67°F to 275°F (-55°C to 135°C)

Die-Cut Heat Shrink Labels

| Part Number | Color | Width | | Length | | Min. Cable O.D. | | Max. Wire O.D. | | Wire Range | Labels Per Cassette | Std. Pkg. Qty. | Std. Ctn. Qty. |
|-------------|--------|-------|------|--------|------|-----------------|-----|----------------|------|-------------|---------------------|----------------|----------------|
| | | In. | mm | In. | mm | In. | mm | In. | mm | | | | |
| H100X025H1C | White | 0.25 | 6.4 | 1.00 | 25.4 | 0.04 | 1.0 | 0.13 | 3.3 | 22 – 18 AWG | 100 | 1 | 10 |
| H100X025H2C | Yellow | 0.25 | 6.4 | 1.00 | 25.4 | 0.04 | 1.0 | 0.13 | 3.3 | 22 – 18 AWG | 100 | 1 | 10 |
| H100X034H1C | White | 0.34 | 8.6 | 1.00 | 25.4 | 0.06 | 1.5 | 0.19 | 4.8 | 18 – 12 AWG | 100 | 1 | 10 |
| H100X034H2C | Yellow | 0.34 | 8.6 | 1.00 | 25.4 | 0.06 | 1.5 | 0.19 | 4.8 | 18 – 12 AWG | 100 | 1 | 10 |
| H100X044H1C | White | 0.44 | 11.2 | 1.00 | 25.4 | 0.08 | 2.0 | 0.25 | 6.4 | 16 – 10 AWG | 100 | 1 | 10 |
| H100X044H2C | Yellow | 0.44 | 11.2 | 1.00 | 25.4 | 0.08 | 2.0 | 0.25 | 6.4 | 16 – 10 AWG | 100 | 1 | 10 |
| H100X064H1C | White | 0.64 | 16.3 | 1.00 | 25.4 | 0.13 | 3.3 | 0.38 | 9.7 | 12 – 6 AWG | 75 | 1 | 10 |
| H100X064H2C | Yellow | 0.64 | 16.3 | 1.00 | 25.4 | 0.13 | 3.3 | 0.38 | 9.7 | 12 – 6 AWG | 75 | 1 | 10 |
| H100X084H1C | White | 0.84 | 21.3 | 1.00 | 25.4 | 0.17 | 4.3 | 0.50 | 12.7 | 8 – 1 AWG | 75 | 1 | 10 |
| H100X084H2C | Yellow | 0.84 | 21.3 | 1.00 | 25.4 | 0.17 | 4.3 | 0.50 | 12.7 | 8 – 1 AWG | 75 | 1 | 10 |

Order number of cassettes required.

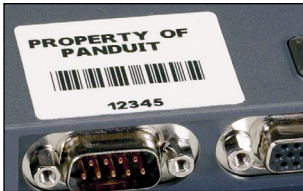
Continuous Heat Shrink Labels

| Part Number | Color | Width | | Length | | Min. Cable O.D. | | Max. Wire O.D. | | Wire Range | Std. Pkg. Qty. | Std. Ctn. Qty. |
|-------------|--------|-------|------|--------|-----|-----------------|-----|----------------|------|-------------|----------------|----------------|
| | | In. | mm | Ft. | m | In. | mm | In. | mm | | | |
| H000X025H1C | White | 0.25 | 6.4 | 8.0 | 2.4 | 0.04 | 1.0 | 0.13 | 3.3 | 22 – 18 AWG | 1 | 10 |
| H000X025H2C | Yellow | 0.25 | 6.4 | 8.0 | 2.4 | 0.04 | 1.0 | 0.13 | 3.3 | 22 – 18 AWG | 1 | 10 |
| H000X034H1C | White | 0.34 | 8.6 | 8.0 | 2.4 | 0.06 | 1.5 | 0.19 | 4.8 | 18 – 12 AWG | 1 | 10 |
| H000X034H2C | Yellow | 0.34 | 8.6 | 8.0 | 2.4 | 0.06 | 1.5 | 0.19 | 4.8 | 18 – 12 AWG | 1 | 10 |
| H000X044H1C | White | 0.44 | 11.2 | 6.0 | 1.8 | 0.08 | 2.0 | 0.25 | 6.4 | 16 – 10 AWG | 1 | 10 |
| H000X044H2C | Yellow | 0.44 | 11.2 | 6.0 | 1.8 | 0.08 | 2.0 | 0.25 | 6.4 | 16 – 10 AWG | 1 | 10 |
| H000X064H1C | White | 0.64 | 16.3 | 6.0 | 1.8 | 0.13 | 3.3 | 0.38 | 9.7 | 12 – 6 AWG | 1 | 10 |
| H000X064H2C | Yellow | 0.64 | 16.3 | 6.0 | 1.8 | 0.13 | 3.3 | 0.38 | 9.7 | 12 – 6 AWG | 1 | 10 |
| H000X084H1C | White | 0.84 | 21.3 | 6.0 | 1.8 | 0.17 | 4.3 | 0.50 | 12.7 | 8 – 1 AWG | 1 | 10 |
| H000X084H2C | Yellow | 0.84 | 21.3 | 6.0 | 1.8 | 0.17 | 4.3 | 0.50 | 12.7 | 8 – 1 AWG | 1 | 10 |

Order number of cassettes required.

General Component Label Cassettes

- Fast-loading P1™ Label Cassette includes both label material and ribbon to make changing labels easy
- Multi-purpose labels for identifying flat surfaces such as components, control panels, circuit boards, and general labeling
- Die-cut labels designed to provide maximum aesthetic quality and appearance
- Vinyl cloth labels can be repositioned or reused
- Super tack adhesive labels are ideal for rough, textured, or coated surfaces
- Tamper-resistant, destructible labels are designed to prevent easy removal



- Vinyl Cloth (CB)
- Polyester (YJ, YL, YM)
- Polyester Super Tack (YP)
- Tamper Resistant Polyolefin (FN)

- 50°F to 170°F (10°C to 77°C)
- 40°F to 302°F (-40°C to 150°C)
- 40°F to 302°F (-40°C to 150°C)
- 40°F to 176°F (-40°C to 80°C)

Polyester Component Labels

| Part Number | Color | Width | | Height | | Labels Per Cassette | Std. Pkg. Qty. | Std. Ctn. Qty. |
|-------------|--------|-------|------|--------|------|---------------------|----------------|----------------|
| | | In. | mm | In. | mm | | | |
| C060X020YJC | White | 0.60 | 15.2 | 0.20 | 5.1 | 750 | 1 | 10 |
| C075X025YLC | Yellow | 0.75 | 19.1 | 25.4 | 6.4 | 500 | 1 | 10 |
| C100X025YJC | White | 1.00 | 25.4 | 0.25 | 6.4 | 500 | 1 | 10 |
| C100X025YLC | Yellow | 1.00 | 25.4 | 0.25 | 6.44 | 500 | 1 | 10 |
| C100X050YJC | White | 1.00 | 25.4 | 0.50 | 12.7 | 500 | 1 | 10 |
| C100X050YMC | Silver | 1.00 | 25.4 | 0.50 | 12.7 | 500 | 1 | 10 |
| C150X075YJC | White | 1.50 | 38.1 | 0.75 | 19.1 | 250 | 1 | 10 |
| C200X050YJC | White | 2.00 | 50.8 | 0.50 | 12.7 | 200 | 1 | 10 |
| C200X100YJC | White | 2.00 | 50.8 | 1.00 | 25.4 | 200 | 1 | 10 |
| C200X100YMC | Silver | 2.00 | 50.8 | 1.00 | 25.4 | 150 | 1 | 10 |

Order number of cassettes required.

Vinyl Cloth Component Labels

| Part Number | Color | Width | | Height | | Labels Per Cassette | Std. Pkg. Qty. | Std. Ctn. Qty. |
|-------------|-------|-------|------|--------|------|---------------------|----------------|----------------|
| | | In. | mm | In. | mm | | | |
| C100X050CBC | White | 1.00 | 25.4 | 0.50 | 12.7 | 175 | 1 | 10 |
| C200X050CBC | White | 2.00 | 50.8 | 0.50 | 12.7 | 50 | 1 | 10 |

Order number of cassettes required.

Super Tack Polyester Component Labels

| Part Number | Color | Width | | Height | | Labels Per Cassette | Std. Pkg. Qty. | Std. Ctn. Qty. |
|-------------|-------|-------|------|--------|------|---------------------|----------------|----------------|
| | | In. | mm | In. | mm | | | |
| C100X050YPC | White | 1.00 | 25.4 | 0.50 | 12.7 | 250 | 1 | 10 |
| C150X075YPC | White | 1.50 | 38.1 | 0.75 | 19.1 | 175 | 1 | 10 |
| C200X050YPC | White | 2.00 | 50.8 | 0.50 | 12.7 | 150 | 1 | 10 |
| C200X100YPC | White | 2.00 | 50.8 | 1.00 | 25.4 | 150 | 1 | 10 |

Order number of cassettes required.

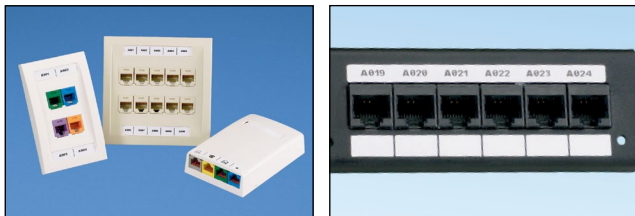
Tamper Resistant Component Labels

| Part Number | Color | Width | | Height | | Labels Per Cassette | Std. Pkg. Qty. | Std. Ctn. Qty. |
|-------------|-------|-------|------|--------|------|---------------------|----------------|----------------|
| | | In. | mm | In. | mm | | | |
| C189X047FNC | White | 1.89 | 48.0 | 0.47 | 12.0 | 175 | 1 | 10 |

Order number of cassettes required.

Network Component Label Cassettes


- To find the suggested label solutions for a specific network component, refer to the Physical Infrastructure Systems Catalog (SA-NCCB51)
- Fast-loading P1™ Label Cassette includes both label material and ribbon to make changing labels easy
- Use for identifying patch panels, faceplates, punchdown blocks, and other network systems hardware
- Die-cut labels designed to provide maximum aesthetic quality and appearance



 Polyolefin (FJ)

 -40°F to 180°F (-40°C to 82°C)

 Non-Adhesive Polyester (Y1)

 -10°F to 311°F (-23°C to 155°C)

Polyolefin Component Labels

| Part Number | Color | Width | | Height | | Application | Labels Per Cassette | Std. Pkg. Qty. | Std. Ctn. Qty. |
|-------------|-------|-------|------|--------|------|-------------|---------------------|----------------|----------------|
| | | In. | mm | In. | mm | | | | |
| C061X030FJC | White | 0.61 | 15.5 | 0.30 | 7.6 | 1-port | 500 | 1 | 10 |
| C125X030FJC | White | 1.25 | 31.8 | 0.30 | 7.6 | 2-port | 200 | 1 | 10 |
| C138X019FJC | White | 1.38 | 35.1 | 0.19 | 4.8 | module | 200 | 1 | 10 |
| C188X030FJC | White | 1.88 | 47.8 | 0.30 | 7.6 | 3-port | 150 | 1 | 10 |
| C200X100FJC | White | 2.00 | 50.8 | 1.00 | 25.4 | SLCT | 150 | 1 | 10 |
| C252X030FJC | White | 2.52 | 64.0 | 0.30 | 7.6 | 4-port | 125 | 1 | 10 |
| C261X030FJC | White | 2.61 | 66.3 | 0.30 | 7.6 | 4-port | 125 | 1 | 10 |
| C315X030FJC | White | 3.15 | 80.0 | 0.30 | 7.6 | 5-port | 100 | 1 | 10 |
| C379X030FJC | White | 3.79 | 96.3 | 0.30 | 7.6 | 6-port | 75 | 1 | 10 |

Order number of cassettes required.

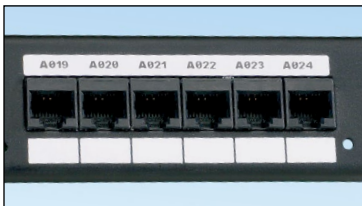
Non-Adhesive Polyester Component Labels

| Part Number | Color | Width | | Height | | Application | Labels Per Cassette | Std. Pkg. Qty. | Std. Ctn. Qty. |
|-------------|-------|-------|-------|--------|------|----------------------------|---------------------|----------------|----------------|
| | | In. | mm | In. | mm | | | | |
| C150X030Y1C | White | 1.50 | 38.1 | 0.30 | 7.6 | 3-port | 200 | 1 | 10 |
| C195X040Y1C | White | 1.95 | 49.5 | 0.40 | 10.2 | Single-gang faceplate | 100 | 1 | 10 |
| C261X035Y1C | White | 2.61 | 66.3 | 0.35 | 8.9 | 4-port | 75 | 1 | 10 |
| C282X030Y1C | White | 2.82 | 71.6 | 0.30 | 7.6 | 4-port | 75 | 1 | 10 |
| C288X040Y1C | White | 2.88 | 73.2 | 0.40 | 10.2 | Double-gang faceplate | 75 | 1 | 10 |
| C390X030Y1C | White | 3.90 | 99.1 | 0.30 | 7.6 | 6-port | 50 | 1 | 10 |
| C750X050Y1C | White | 7.50 | 190.5 | 0.50 | 12.7 | 110 Punchdown Block | 30 | 1 | 10 |
| C788X050Y1C | White | 7.88 | 200.2 | 0.50 | 12.7 | GP6™ PLUS Punchdown System | 30 | 1 | 10 |

Order number of cassettes required.

Ultimate ID® Network Label Cassette

- Fast-loading P1™ Label Cassette includes both label material and ribbon to make changing labels easy
- Label cassette designed for use with the Ultimate ID® Faceplates, Patch Panels, Marker Ties, Modular Furniture Faceplates, and Surface Mount Boxes
- Labels assist in the compliance of TIA-606-B labeling standard



Non-Adhesive Polyester

-10°F to 311°F (-23°C to 155°C)

| Part Number | Ribbon and Material Color | Height | | Length | | Std. Pkg. Qty. | Std. Ctn. Qty. |
|----------------|---------------------------|--------|-----|--------|-----|----------------|----------------|
| | | In. | mm | Ft. | m | | |
| UILS8BW | Black on White | 0.24 | 6.0 | 25.0 | 7.6 | 1 | 10 |

Order number of labels required in multiples of Std. Pkg. Qty.

Continuous Terminal Block Label Cassettes

- Fast-loading P1™ Label Cassette includes both label material and ribbon to make changing labels easy
- Print terminal block labels ranging in size from 0.19 inches to 0.38 inches



Polyolefin (FJ)

-40°F to 180°F (-40°C to 82°C)

| Part Number | Ribbon and Material Color | Height | | Length | | Std. Pkg. Qty. | Std. Ctn. Qty. |
|-----------------------|---------------------------|--------|-----|--------|-----|----------------|----------------|
| | | In. | mm | Ft. | m | | |
| T019X000FJC-BK | Black on White | 0.19 | 4.8 | 25.0 | 7.6 | 1 | 10 |
| T024X000FJC-BK | Black on White | 0.24 | 6.1 | 25.0 | 7.6 | 1 | 10 |
| T031X000FJC-BK | Black on White | 0.31 | 7.9 | 25.0 | 7.6 | 1 | 10 |
| T038X000FJC-BK | Black on White | 0.38 | 9.7 | 25.0 | 7.6 | 1 | 10 |

Order number of labels required in multiples of Std. Pkg. Qty.

Continuous Reflective Tape Cassettes

- Fast-loading P1™ Label Cassette includes both label material and ribbon to make changing labels easy
- Reflective material improves label visibility in low light conditions
- For flat label applications only



Reflective Polymer Film (R)

-40°F to 180°F (-40°C to 82°C)

| Part Number | Ribbon and Material Color | Height | | Length | | Std. Pkg. Qty. | Std. Ctn. Qty. |
|-----------------------|---------------------------|--------|------|--------|-----|----------------|----------------|
| | | In. | mm | Ft. | m | | |
| T100X000RPC-BK | Black on White | 1.00 | 25.4 | 18.0 | 5.5 | 1 | 10 |
| T100X000RUC-BK | Black on Orange | 1.00 | 25.4 | 18.0 | 5.5 | 1 | 10 |
| T100X000RXC-BK | Black on Yellow | 1.00 | 25.4 | 18.0 | 5.5 | 1 | 10 |


Order number of labels required in multiples of Std. Pkg. Qty.

Continuous Tape Cassettes

- Fast-loading P1™ Label Cassette includes both label material and ribbon to make changing labels easy
- Print custom pipe markers, voltage markers, signs, bin markers, and network identification labels on demand
- For flat label applications only




 Polyester (YK)

 -40°F to 302°F (-40°C to 150°C)

 VPC (White Vinyl only)

 -58°F to 176°F (-50°C to 80°C)

 Vinyl (V, Colored Vinyl; non-White)

 -50°F to 225°F (-46°C to 107°C)



| Part Number | Ribbon and Material Color | Height | | Length | | Std. Pkg. Qty. | Std. Ctn. Qty. |
|----------------|---------------------------|--------|------|--------|-----|----------------|----------------|
| | | In. | mm | Ft. | m | | |
| T024X000VPC-BK | Black on White | 0.24 | 6.1 | 25.0 | 7.6 | 1 | 10 |
| T024X000VYC-WH | White on Black | 0.24 | 6.1 | 25.0 | 7.6 | 1 | 10 |
| T024X000YKC-BK | Black on Clear | 0.24 | 6.1 | 25.0 | 7.6 | 1 | 10 |
| T038X000VPC-BK | Black on White | 0.38 | 9.7 | 25.0 | 7.6 | 1 | 10 |
| T038X000VQC-BK | Black on Blue | 0.38 | 9.7 | 25.0 | 7.6 | 1 | 10 |
| T038X000VQC-WH | White on Blue | 0.38 | 9.7 | 25.0 | 7.6 | 1 | 10 |
| T038X000VSC-BK | Black on Green | 0.38 | 9.7 | 25.0 | 7.6 | 1 | 10 |
| T038X000VSC-WH | White on Green | 0.38 | 9.7 | 25.0 | 7.6 | 1 | 10 |
| T038X000VUC-BK | Black on Orange | 0.38 | 9.7 | 25.0 | 7.6 | 1 | 10 |
| T038X000VWC-BK | Black on Red | 0.38 | 9.7 | 25.0 | 7.6 | 1 | 10 |
| T038X000VWC-WH | White on Red | 0.38 | 9.7 | 25.0 | 7.6 | 1 | 10 |
| T038X000VXC-BK | Black on Yellow | 0.38 | 9.7 | 25.0 | 7.6 | 1 | 10 |
| T038X000VYC-WH | White on Black | 0.38 | 9.7 | 25.0 | 7.6 | 1 | 10 |
| T038X000YKC-BK | Black on Clear | 0.38 | 9.7 | 25.0 | 7.6 | 1 | 10 |
| T050X000VPC-BK | Black on White | 0.50 | 12.7 | 25.0 | 7.6 | 1 | 10 |
| T050X000VPC-RD | Red on White | 0.50 | 12.7 | 25.0 | 7.6 | 1 | 10 |
| T050X000VQC-BK | Black on Blue | 0.50 | 12.7 | 25.0 | 7.6 | 1 | 10 |
| T050X000VQC-WH | White on Blue | 0.50 | 12.7 | 25.0 | 7.6 | 1 | 10 |
| T050X000VSC-BK | Black on Green | 0.50 | 12.7 | 25.0 | 7.6 | 1 | 10 |
| T050X000VSC-WH | White on Green | 0.50 | 12.7 | 25.0 | 7.6 | 1 | 10 |
| T050X000VUC-BK | Black on Orange | 0.50 | 12.7 | 25.0 | 7.6 | 1 | 10 |
| T050X000VWC-BK | Black on Red | 0.50 | 12.7 | 25.0 | 7.6 | 1 | 10 |
| T050X000VWC-WH | White on Red | 0.50 | 12.7 | 25.0 | 7.6 | 1 | 10 |
| T050X000VXC-BK | Black on Yellow | 0.50 | 12.7 | 25.0 | 7.6 | 1 | 10 |
| T050X000VYC-WH | White on Black | 0.50 | 12.7 | 25.0 | 7.6 | 1 | 10 |
| T050X000YKC-BK | Black on Clear | 0.50 | 12.7 | 25.0 | 7.6 | 1 | 10 |
| T050X000YKC-WH | White on Clear | 0.50 | 12.7 | 25.0 | 7.6 | 1 | 10 |
| T075X000VPC-BK | Black on White | 0.75 | 19.1 | 25.0 | 7.6 | 1 | 10 |
| T075X000VQC-BK | Black on Blue | 0.75 | 19.1 | 25.0 | 7.6 | 1 | 10 |
| T075X000VQC-WH | White on Blue | 0.75 | 19.1 | 25.0 | 7.6 | 1 | 10 |
| T075X000VSC-BK | Black on Green | 0.75 | 19.1 | 25.0 | 7.6 | 1 | 10 |
| T075X000VSC-WH | White on Green | 0.75 | 19.1 | 25.0 | 7.6 | 1 | 10 |
| T075X000VUC-BK | Black on Orange | 0.75 | 19.1 | 25.0 | 7.6 | 1 | 10 |
| T075X000VWC-BK | Black on Red | 0.75 | 19.1 | 25.0 | 7.6 | 1 | 10 |
| T075X000VWC-WH | White on Red | 0.75 | 19.1 | 25.0 | 7.6 | 1 | 10 |
| T075X000VXC-BK | Black on Yellow | 0.75 | 19.1 | 25.0 | 7.6 | 1 | 10 |
| T075X000VYC-WH | White on Black | 0.75 | 19.1 | 25.0 | 7.6 | 1 | 10 |
| T075X000YKC-BK | Black on Clear | 0.75 | 19.1 | 25.0 | 7.6 | 1 | 10 |
| T100X000VPC-BK | Black on White | 1.00 | 25.4 | 25.0 | 7.6 | 1 | 10 |
| T100X000VPC-RD | Red on White | 1.00 | 25.4 | 25.0 | 7.6 | 1 | 10 |
| T100X000VQC-BK | Black on Blue | 1.00 | 25.4 | 25.0 | 7.6 | 1 | 10 |
| T100X000VQC-WH | White on Blue | 1.00 | 25.4 | 25.0 | 7.6 | 1 | 10 |
| T100X000VSC-BK | Black on Green | 1.00 | 25.4 | 25.0 | 7.6 | 1 | 10 |
| T100X000VSC-WH | White on Green | 1.00 | 25.4 | 25.0 | 7.6 | 1 | 10 |
| T100X000VUC-BK | Black on Orange | 1.00 | 25.4 | 25.0 | 7.6 | 1 | 10 |
| T100X000VWC-BK | Black on Red | 1.00 | 25.4 | 25.0 | 7.6 | 1 | 10 |
| T100X000VWC-WH | White on Red | 1.00 | 25.4 | 25.0 | 7.6 | 1 | 10 |
| T100X000VXC-BK | Black on Yellow | 1.00 | 25.4 | 25.0 | 7.6 | 1 | 10 |
| T100X000VYC-WH | White on Black | 1.00 | 25.4 | 25.0 | 7.6 | 1 | 10 |
| T100X000YKC-BK | Black on Clear | 1.00 | 25.4 | 25.0 | 7.6 | 1 | 10 |
| T100X000YKC-WH | White on Clear | 1.00 | 25.4 | 25.0 | 7.6 | 1 | 10 |

Order number of labels required in multiples of Std. Pkg. Qty.

Label Material Selection Guide

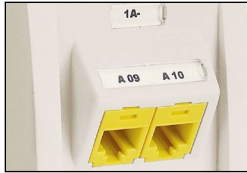
| Material Type | Temperature Range | Description | Color(s) | Outdoor Rated | UL Recognized | RoHS Compliant† |
|--|------------------------------------|---|---|---------------|---------------|-----------------|
| Heat Shrinkable Polyolefin [^] | -67°F to 275°F (-55°C to 135°C) | Polyolefin heat shrink for wire and cable marking applications, excellent print quality. | White Yellow | Yes | UL 224 | Yes |
| Nylon Cloth, Adhesive | -40°F to 285°F (-40°C to 140°C) | General purpose material for wire and cable marking as well as flat surfaces; superior legibility; not repositionable. | White Yellow | No | No | Yes |
| Polyester, Adhesive | -40°F to 302°F (-40°C to 150°C) | General purpose material for component labeling; excellent print quality; does not stretch or easily tear. | Clear | Yes | UL 969 | Yes |
| | -10°F to 302°F (-23°C to 150°C) | General purpose material for component labeling; excellent print quality; does not stretch or easily tear. | Silver White | Yes | Yes | Yes |
| | | | Yellow | Yes | No | Yes |
| Polyester, Non-Adhesive | -10°F to 311°F (-23°C to 155°C) | Non-adhesive material ideal for network systems labeling; provides durability, high temperature resistance, and dimensional stability. | White | Yes | No | Yes |
| Polyester, Super-Tack Adhesive | -40°F to 302°F (-40°C to 150°C) | Extra strength adhesive material ideal for rough, textured, or coated surfaces. | White | Yes | Yes | Yes |
| | -40°F to 302°F (-40°C to 150°C) | Ideal for flag type, wire and cable marking; unique design can be applied in adhesive and non-adhesive orientations. | White | Yes | Yes | Yes |
| Polyester/Polyolefin, Combination Non-Adhesive | -58°F to 221°F (-50°C to 105°C) | Non-adhesive marker plates offer crisp, clear legends with superior legibility; attachable in a horizontal or vertical orientation. | White Yellow | Yes | No | Yes |
| Polymer Film, Adhesive | -40°F to 180°F (-40°C to 82°C) | Indoor/outdoor rated; heavy duty reflective material for flat applications and safety and facility identification; resistant to UV light, chemical atmosphere and abrasion. | White Orange Yellow | Yes | Yes | Yes |
| | -40°F to 150°F (-40°C to 66°C) | Self-laminating film for wire and cable labeling; unique design allows labels to rotate or slide after installation. | White TIA Blue TIA Green TIA Red TIA Yellow Print-On | Yes | No | Yes |
| Polyolefin, Adhesive | -40°F to 180°F (-40°C to 82°C) | Durable, pliable material with permanent adhesive for terminal block and network component labels. | White | Yes | No | Yes |
| Polyolefin, Tamper Resistant | -40°F to 176°F (-40°C to 80°C) | Tamper resistant, destructible material designed to prevent easy removal. | White | No | UL 969 | Yes |
| Self-Laminating Vinyl, Adhesive | -40°F to 150°F (-40°C to 66°C) | Self-laminating film for most general wire and cable labeling; conformable material. | White TIA Blue TIA Green TIA Red TIA Yellow Print-On | Yes | UL 969 | Yes |
| Vinyl Cloth, Adhesive | 50°F to 170°F (10°C to 77°C) | General purpose material, vinyl impregnated cloth resists oil and abrasion; material can be removed, repositioned, and reused. | White | Yes | UL 969 | Yes |
| Vinyl, Adhesive | -58°F to 176°F (-50°C to 80°C) | General purpose material for pipe marking, bin marking and facility identification; conformable material for flat applications in indoor or outdoor environments. | White | Yes | UL 969 | Yes |
| | -50°F to 225°F (-46°C to 107°C) | | Black Blue Green Orange Red Yellow | Yes | UL 969 | Yes |

[^]Product meets print performance requirements of MIL-M-81531 and MIL-STD-202F Method 215A, Solution A, C, and D.

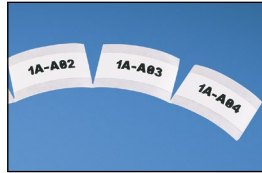
†Material is RoHS compliant per European Directive 2002/95/EC on the Restriction of Hazardous Substances (RoHS).

Label Design Flexibility

- Label cut-to-length functionality eliminates label waste and label trimming labor
- Partial-cut feature available to provide tear-apart strips of labels
- Large graphic display with backlight for improved visibility
- User interface available in English, French, German, Italian, Spanish, and Portuguese
- Market specific labeling tools simplify label creation for network components, panel building, and construction and maintenance
- Customize your labels with these advanced features:
 - Alpha and numeric serialization
 - Date and time stamp
 - Lines
 - Bar codes
 - Frames
 - Symbols
 - Data lists



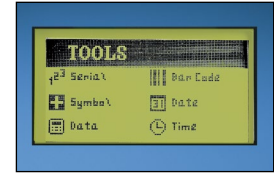
Cut-to-length labels



Partial-cut strip of labels



Graphic display with backlight



Customize labels with advanced features

PC Interface

Connect the PanTher™ LS8E or LS8EQ printer to a wireless laptop or desktop computer for importing data, system upgrades, and printing labels.



USB compatible

- Download and print label files from Microsoft Excel[^]
- Archive label files on a computer for later use or sharing
- Install LS8E or LS8EQ operating system upgrades
- Print labels directly from Panduit® Easy-Mark™ Labeling Software
- LS8-PCKIT includes a USB cable and CD-ROM with software and operator's manual

[^]Excel is a registered trademark of Microsoft Corporation in the United States and/or other countries.

Related Products

Easy-Mark™ Labeling Software

- Easy-Mark™ Labeling Software simplifies label creation for the specific needs of your applications
- Instructions and user interface are available in English, French, German, Italian, Spanish, Korean, Chinese, Portuguese, and Japanese
- Intuitive interview process allows automatic generation of compliant labels and signs
- Software selects and formats the optimum label for your specific project
- WYSIWYG (What You See Is What You Get) user interface, alpha/numeric serialization, data import, symbol import
- Easy-Mark™ Labeling Software is part of a complete line of innovative identification solutions from Panduit
- Supports most Windows[^] fonts drivers for standard thermal transfer, dot matrix, laser, and inkjet, including Panduit thermal transfer printers

System Requirements:

Windows[^] 2000, XP, Vista, Windows 7, or Windows 8; 64MB hard drive space and 64MB RAM (256MB RAM recommended); Microsoft.NET Framework 2.0 or higher; mouse or compatible device, CD-ROM drive, or USB port



| Part Number | Part Description | Std. Pkg. Qty. | Std. Ctn. Qty. |
|-------------|---|----------------|----------------|
| PROG-EMCD3 | Easy-Mark™ Labeling Software, CD-ROM. | 1 | 10 |
| PROG-EM2GO | Easy-Mark™ Portable Application, USB Flash Drive. | 1 | 10 |

[^]Windows is a registered trademarks of Microsoft Corporation in the United States and/or other countries.

WORLDWIDE SUBSIDIARIES AND SALES OFFICES

PANDUIT CANADA
Markham, Ontario
cs-cdn@panduit.com
Phone: 800.777.3300

PANDUIT EUROPE LTD.
London, UK
cs-emea@panduit.com
Phone: 44.20.8601.7200

PANDUIT SINGAPORE PTE. LTD.
Republic of Singapore
cs-ap@panduit.com
Phone: 65.6305.7575

PANDUIT JAPAN
Tokyo, Japan
cs-japan@panduit.com
Phone: 81.3.6863.6000

PANDUIT LATIN AMERICA
Guadalajara, Mexico
cs-la@panduit.com
Phone: 52.33.3777.6000

PANDUIT AUSTRALIA PTY. LTD.
Victoria, Australia
cs-aus@panduit.com
Phone: 61.3.9794.9020

For a copy of Panduit product warranties, log on to www.panduit.com/warranty

For more information

Visit us at www.panduit.com

Contact Customer Service by email: cs@panduit.com
or by phone: 800.777.3300

©2016 Panduit Corp.
ALL RIGHTS RESERVED.
Printed in the U.S.A.

Product Bulletin Number **IDCB79--SA-ENG**
Replaces IDCB72--SA-ENG
1/2016

X-ON Electronics

Largest Supplier of Electrical and Electronic Components

Click to view similar products for [Printers category](#):

Click to view products by [Panduit manufacturer](#):

Other Similar products are found below :

[897252-000](#) [CU0620-000](#) [F39639-000](#) [FTP-648MCL570](#) [PTMBL1912A](#) [PWC-L07A1-W1-E](#) [DPU-V445-10B-E](#) [D-SCE-12-50-S1-4](#) [D-SCE-3.2-50-S1-4](#) [IF2302-01UK-E](#) [IF9001-01P-E](#) [IFC-001K](#) [2000P-RIBBON-4AG-MED](#) [206868-000](#) [OP-LH200A-E](#) [LB1256-E](#) [LM-1/4-TUBE-WE](#) [308-LE](#) [SMS-V-19-9](#) [ACUH205A-E](#) [1813390001](#) [FTP-040P001](#) [FTP-628CU601R](#) [PW-C0725-W2-U](#) [HANDHELD-TMS-3.9-9](#) [3045950001](#) [351013-000](#) [RH-48-00-E](#) [4775630001](#) [TSK-508406-2.5CS8982](#) [TTC-PRINTER-PRINthead-300](#) [HW-762254-5-9](#) [IF2301-01B](#) [IFC-001K-E](#) [IFH001-01B](#) [LM-1/2-TUBE-WE](#) [DPU-D3-01A-E](#) [D-SCE-12-50-9](#) [D-SCE-4.8-50-4](#) [094514-000](#) [E64127-000](#) [ED4839-000](#) [T200-IDENT-DR4-DRIVEROLLER](#) [CP3963-000](#) [2000P-RIBBON-4AG-NAR](#) [2000P-RIBBON-WH-MED](#) [U001023895X1](#) [FTP-624Y002](#) [ED4098-000](#) [NC-LSC05](#)