

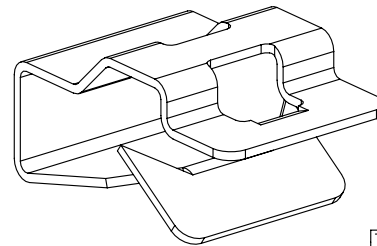
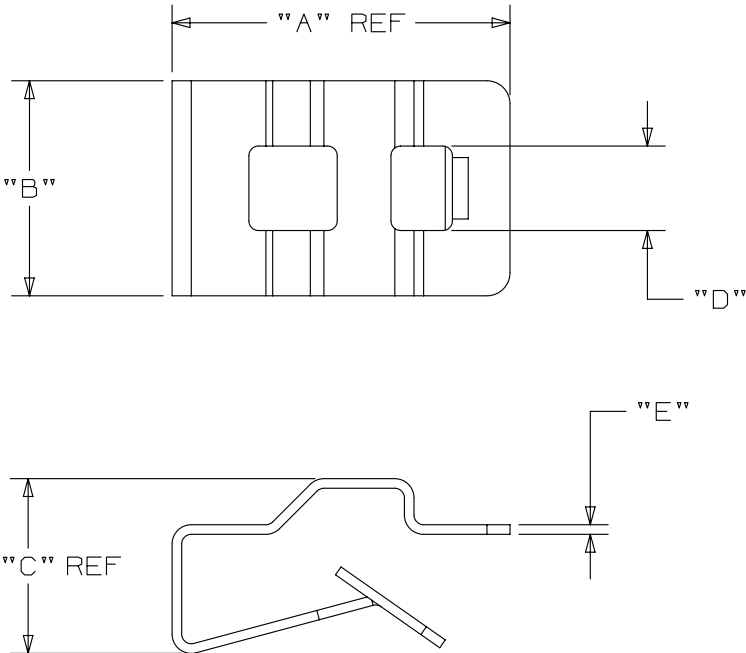
THIS COPY IS PROVIDED ON A RESTRICTED BASIS AND IS NOT TO BE USED IN ANY WAY DETRIMENTAL TO THE INTERESTS OF PANDUIT CORP.

PANDUIT PART NUMBER*	USED WITH THESE CABLE TIES **	PANEL *** THICKNESS	DIMENSIONS INCHES / [MM]					WEIGHT lbs/100 pcs (g)/100 pcs
			A (REF)	B	C (REF)	D	E	
MCMS12-P	M, I, S	0.03 - 0.125 [0.76-3.18]	0.880 [22.35]	0.560 [14.22]	0.318 [8.08]	0.220 [5.59]	0.025 [0.64]	0.59 (268)
MCMS25-P		0.125 - 0.240 [3.18 - 6.09]			0.455 [11.56]			
MCMS30-P		0.220 - 0.270 [5.58 - 6.86]			0.535 [13.59]			

NOTES:

- * 1. See current price sheet for part number suffix designation for package size.
- ** 2. Cable tie cross-section code:
M - miniature
I - intermediate
S - standard
- *** 3. Refer to table for panel thickness ranges for each product.
- 4. MATERIAL: AISI 1050 STEEL .025" ±.002 THICK
HEAT TREAT TO RC 46-50 AFTER FORMING

PLATING: ZINC PLATED WITH CLEAR CHROMATE
CONVERSION COATING PER
ASTM B 633-85 TYPE III CLASS 1 SC#1 MILD.



MCMS25-P
(SHOWN)

DIMENSIONS IN BRACKETS ARE METRIC [MM]

TITLE		MCMS--P METAL CLIP ON MOUNT	
CUSTOMER DRAWING			
ITEM REVISION NAME	10B015MV/01		
DATASET FILE NAME	10B015MV/01 - GB1335BA_REV07		
UNLESS OTHERWISE SPECIFIED, DIMENSIONAL TOLERANCES ARE: IN [mm]		MATERIAL:	
.x ± 0.05 [1.3] .xxx ± 0.015 [0.38]		SEE NOTE 4	
.xx ± 0.02 [0.5] ANGLES ± 5 °			
		DRAWING NUMBER:	
		GB1335BA	
DRAWN BY	DATE	CHK	SCALE
JAD	9/23/96		FULL
SHT 1 OF 1		SIZE	
		A	

REV	DATE	BY	CHK	APR	DESCRIPTION	ECN
07	12/3/14	MBY	MPH	JADE	REVISED DIM 'C'	GB1335BA/07
06	5/29/14	MBY	MPH	JADE	MADE DIM "A" REF. AND INCREASED .XXX TOLERANCE FROM .010 TO .015. UPDATED TITLE BORDER .	GB1335BA/06

X-ON Electronics

Largest Supplier of Electrical and Electronic Components

Click to view similar products for [Cable Tie Mounts](#) category:

Click to view products by [Panduit](#) manufacturer:

Other Similar products are found below :

[3-350087-0](#) [CTB75X75BKA-C](#) [561-EZAB580T](#) [561-EZS375B40](#) [561-TA250125](#) [08443-0](#) [10035-0](#) [561-TA00600](#) [1689174-1](#) [08445-0](#)
[10351-0](#) [561-TA250125B](#) [20015-0](#) [10350-0](#) [10029-0](#) [08484-0](#) [08446-0](#) [08318-0](#) [PAM075NY-A-C](#) [MTH1-3](#) [10044](#) [151-01802](#) [151-11319](#)
[151-11819](#) [PLWP1SB-D](#) [PLWP1M-C](#) [PLWP2SA-D](#) [PLWP2SB-D](#) [PLWP2S-C](#) [PLWP1S-D](#) [PLWP1M-D](#) [TA1S8-C](#) [ABM3H-A-L](#) [ABM3H-](#)
[AT-T0](#) [EMS-A-C0](#) [EMSK3-1-3-0](#) [10079](#) [10030](#) [151-10930](#) [151-10920](#) [3590](#) [151-28320](#) [151-28349](#) [151-28530](#) [151-10914](#) [151-10904](#) [151-](#)
[10915](#) [151-10916](#) [151-10906](#) [115-06960](#)