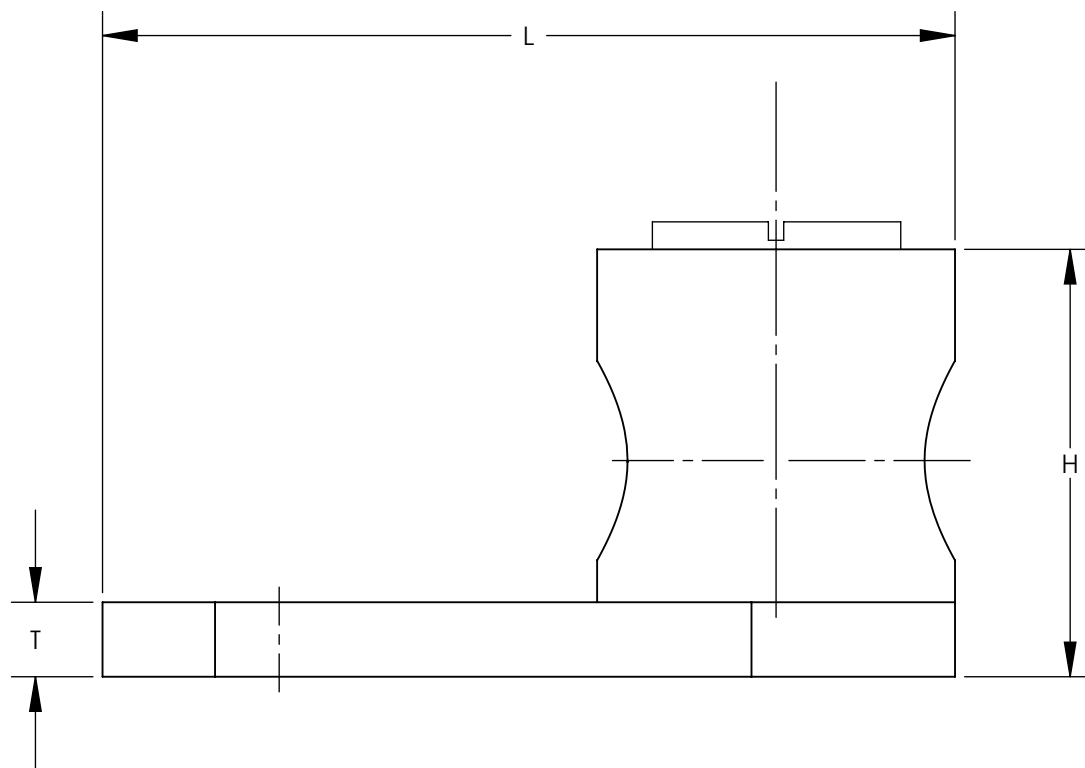


NOTES:

1. PARTS ARE (c UL us) LISTED.
2. FOR COPPER WIRE ONLY
3. PANDUIT PART NUMBERS WITH A "T" ARE TIN PLATED
4. PKG QTY: Q = 25
L = 50
C = 100
D = 500
5. SEE LABEL FOR SCREW TORQUE VALUES



PANDUIT PART NUMBER	CONDUCTOR RANGE	APPROXIMATE DIMENSIONS					INSTALLATION TOOL
		BOLT SIZE	W	H	T	L	
ML8-CY	14 SOL. - 8 STR.	3/16	0.38	0.42	0.08	0.81	SLOT SCREWDRIVER
ML8T-CY	14 SOL. - 8 STR.	3/16	0.38	0.42	0.08	0.81	
ML4-CY	14 SOL. - 4 STR.	1/4	0.54	0.55	0.09	1.11	
ML4T-CY	14 SOL. - 4 STR.	1/4	0.54	0.55	0.09	1.11	
ML1/0-LY	14 SOL. - 1/0 STR.	5/16	0.73	0.79	0.09	1.57	1/4" HEX WRENCH
ML1/0T-LY	14 SOL. - 1/0 STR.	5/16	0.73	0.79	0.09	1.57	
ML250-QY	6 STR. - 250kcmil	3/8	0.94	1.06	0.12	1.94	
ML250T-QY	6 STR. - 250kcmil	3/8	0.94	1.06	0.12	1.94	

05	11/11	JHNU	RGB	REVISED ML1/0, ML1/0T WIRE RANGE: 14-1/0 WAS 8-1/0	N41569BB-C41569	RGB	RGB	PANDUIT CORP. TINLEY PARK, ILLINOIS
04	04/09	JESH	JESH	UPDATED NOTE WIRE RANGE 8 SOL - 1/0 STR WAS 14 SOL - 1/0 STR				
03	03/09	JESH	JESH	UPDATED NOTE 1 PARTS ARE (c UL us) LISTED. WAS UL LISTED & CSA CERTIFIED				
				ADD NOTE 5. SEE LABEL FOR SCREW TORQUE VALUES				
02	03/09	JESH	JESH	UPDATED STAMP INFORMATION, AND APPROXIMATE DIMENSIONS				
---	---	---	---	REMOVED ML500-3Y FROM DRAWING REMOVED ROHS NOTE; REMOVED MADE IN U.S.A. NOTE CONVERTED DRAWING TO SOLIDWORKS				UNLESS OTHERWISE SPECIFIED DIMENSIONAL TOLERANCES ARE: (.X) ± --- (.XXX) ± --- (.XX) ± --- ANGLES ± ---
01	8/07	JHNU	JHNU					UNLESS OTHERWISE SPECIFIED, ALL DIMENSIONS ARE GIVEN IN INCHES, THIRD ANGLE PROJECTION
00	7/06	JHNU	LEM	DRAWING RELEASED - ROHS COMPLIANT	PC00487			DRAWN BY: JHNU DATE: _____ MAT'L: COPPER SCALE: NONE
REV	DATE	BY	CHK	DESCRIPTION	ECN	-R	SUP	DRAWING NO / CAD FILE: C41569_05 DWG SIZE: B

X-ON Electronics

Largest Supplier of Electrical and Electronic Components

Click to view similar products for [Terminals](#) category:

Click to view products by [Panduit](#) manufacturer:

Other Similar products are found below :

[00-054007-01074-6](#) [00-054007-70206-1](#) [00-054007-70210-8](#) [00-054007-70217-7](#) [00-054007-70226-9](#) [00-054007-70228-3](#) [00-054007-70248-1](#) [00-054007-70256-6](#) [00-054007-70301-3](#) [00-054007-70316-7](#) [0-0320562-0](#) [00-054007-49560-4](#) [00-054007-70209-2](#) [00-054007-70225-2](#) [00-054007-70227-6](#) [00-054007-70231-3](#) [00-054007-70241-2](#) [00-054007-70242-9](#) [00-054007-70244-3](#) [00-054007-70246-7](#) [00-054007-70263-4](#) [00-054007-70288-7](#) [00-054007-70290-0](#) [00-054007-70300-6](#) [00-054007-70304-4](#) [01-2065-1-0216](#) [01-2900-1-04412](#) [00581P0075](#) [600TS-10](#) [60205-1](#) [604200-1](#) [605601-1](#) [60598-1-CUT-TAPE](#) [61314-6-C](#) [61810-3](#) [61-S](#) [61-SN](#) [626-0194](#) [62-NBM-A](#) [62-SN](#) [62-SP](#) [63-S](#) [640179-1](#) [M55155/059I03](#) [M55155/079C01](#) [M55155/099H02](#) [M55155/109H01](#) [M55155/109H02](#) [M55155/12XH05](#) [M55155/16XH02](#)