

RJ45 Plug Latch Guard

specifications

The RJ45 plug latch guard with a pull tab shall protect and prevent the accidental removal of RJ45 plugs installed in high density areas such as switches, servers and high density patch panels by securing the latch on the plugs. The plug latch guard shall include a "pull tab" for easy access and removal. It shall be compatible with but not limited to Panduit Cat 5e and Cat 6 UTP modular plugs.



technical information

Dimensions:	2.0" (49.89mm) L x .5" (13.84) W x .5" (13.84) W
Operating temperature:	-10° C to 60° C (14° F to 140° F)
Storage temperature:	-40° C to 70° C (-40° F to 158° F)
Material:	Polypropylene (PP); UL94V0 rated (milky white color)
RoHS compliance:	Compliant

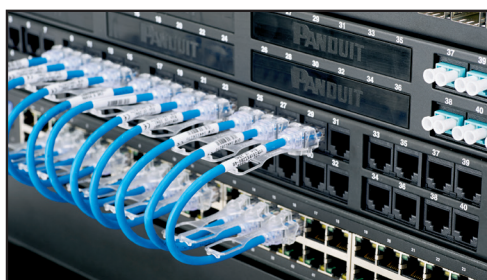
key features and benefits

Pull tab	Patent-pending feature that allows easy removal of the guard from the plug without disconnecting the plug
Visible status lights	The innovative design allows visibility of status lights or any information etched on the servers, jack modules and plugs
Keys not required	This product does not require a key for removal, saving time while still preventing accidental removal
Multiple installation options	Can be mounted in two different ways based on usage and preference
Latch Protection	Prevents unintended latch disengagement on adjacent patch cords
Multiple Colors	Available in three colors: Milky White, Red and Yellow. Red can be used to indicate "Do Not Touch" and Yellow to indicate "Proceed with caution"

applications

RJ45 Plug Latch Guard has an innovative (patent pending) design which prevents the loss of network connectivity/data due to the accidental disconnection of plugs in high density spaces around switches, servers, and patch panels. Access to these high density places pose a challenge and may result in disconnection of neighboring patch cords by becoming disturbed and/or jostled.

The RJ45 Plug Latch Guard includes a pull tab and a main body which is designed to protect patch cords by wrapping around the plug and securing it in place when installed. Patch cords can only be detached after the latch guard is removed by pulling on the tab which is easily accessible. This user-friendly product allows easy installation and removal of the guard from the plug thus saving time and money.



RJ45 Plug Latch Guard

RJ45 Plug Latch Guard (pkg. of 10):	PLGUARD-X†
RJ45 Plug Latch Guard (pkg. of 100):	PLGUARD-C†

Compatible Products for use with the RJ45 Plug Latch Guard:

TX6™ PLUS Modular Plug

24 AWG, Unshielded:	SP688-C
28 AWG, Unshielded:	SP628-C
30 AWG, Unshielded:	SP630-C

TX5e™ Cat 5e Modular Plug

24 AWG, Unshielded:	MP588-†
28 AWG, Unshielded:	MP528-†
30 AWG, Unshielded:	MP530-†

TX6™ 10Gig™ Cat 6A Patch Cords

26 AWG, Unshielded:	UTP6ASD^**
28 AWG, Unshielded (feet):	UTP28X^**
28 AWG, Unshielded (meter):	UTP28X^M**

TX6™ PLUS Cat 6 UTP Patch Cords

24 AWG, CM (feet):	UTPSP^**Y
24 AWG, CM (meter):	UTPSP^M**Y
24 AWG, LSZH (meter):	UTPSP^L^M**Y
28 AWG (feet):	UTP28SP^**
28 AWG (meter):	UTP28SP^M**

TX5e™ Cat 5e UTP Patch Cords

24 AWG, CM (feet):	UTPCH^**Y
24 AWG, CM (meter):	UTPCH^M**Y
24 AWG, LSZH (meter):	UTPCH^L^M**Y
28 AWG (feet):	UTP28CH^**
28 AWG (meter):	UTP28CH^M**

† For additional colors, add: RD (Red) or YL (Yellow). PLGUARDRD-X (-C) for Red or PLGUARDYL-X (-C) for Yellow

† Package quantities include:

-X for 10

-L for 50

-C for 100

-M for 1000.

^ - Foot lengths

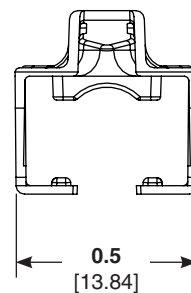
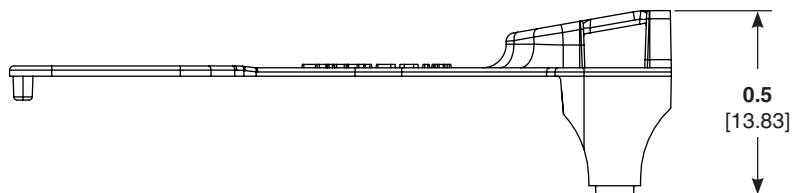
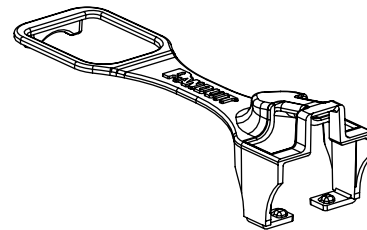
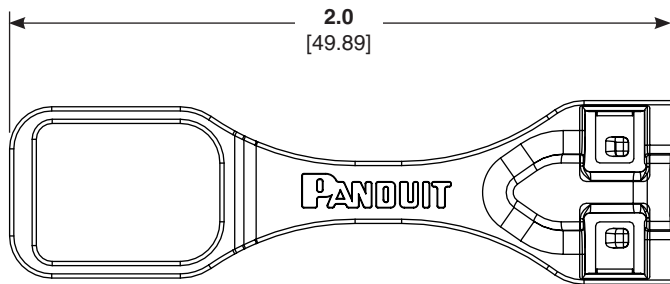
** - Standard colors

Contact customer service or visit www.panduit.com for available standard module colors and/or patch cord colors and lengths.

NOTE: Not recommended for 24 AWG Cat 6A Patch Cords - UTP6A^** and STP patch cords and plugs.

RJ45 Plug Latch Guard

RJ45 Plug Latch Guard (dimensions)



WORLDWIDE SUBSIDIARIES AND SALES OFFICES

PANDUIT CANADA
Markham, Ontario
cs-cdn@panduit.com
Phone: 800.777.3300

PANDUIT EUROPE LTD.
London, UK
cs-emea@panduit.com
Phone: 44.20.8601.7200

PANDUIT SINGAPORE PTE. LTD.
Republic of Singapore
cs-ap@panduit.com
Phone: 65.6305.7575

PANDUIT JAPAN
Tokyo, Japan
cs-japan@panduit.com
Phone: 81.3.6863.6000

PANDUIT LATIN AMERICA
Guadalajara, Mexico
cs-la@panduit.com
Phone: 52.33.3777.6000

PANDUIT AUSTRALIA PTY. LTD.
Victoria, Australia
cs-aus@panduit.com
Phone: 61.3.9794.9020

For a copy of Panduit product warranties, log on to www.panduit.com/warranty

For more information

Visit us at www.panduit.com

Contact Customer Service by email: cs@panduit.com
or by phone: 800.777.3300

PANDUIT[®]

© 2015 Panduit Corp.
ALL RIGHTS RESERVED.
COSP385--WW-ENG
8/2015

X-ON Electronics

Largest Supplier of Electrical and Electronic Components

Click to view similar products for [Modular Connectors](#) / [Ethernet Connectors](#) category:

Click to view products by [Panduit](#) manufacturer:

Other Similar products are found below :

[RJE231881317T](#) [MP1010RX-1000](#) [MP44RX-1000](#) [GAX-3-66](#) [GAX-8-62](#) [93606-0253](#) [GD-A-44](#) [GDCX-PA-66-50](#) [GDCX-PN-64](#) [GDCX-PN-66](#) [GDCX-PN-66-50](#) [GDLX-A-66](#) [GDLX-A-88](#) [GDLX-N-66](#) [GDLX-S-66](#) [GDLX-S-88K](#) [GDTX-S-88-50](#) [GDX-PA-1010](#) [GLX-N-1010M-BLK](#) [GLX-S-88M-BLK](#) [GMX-N-1010](#) [GMX-S-1010](#) [GMX-S-66](#) [GMX-SMT2-N-1010](#) [GMX-SMT2-N-64-50](#) [GMX-SMT2-N-88](#) [GMX-SMT2-S6-88](#) [GMX-SMT4-N-88](#) [GPX-2-64](#) [GRT1-BT1-5](#) [GSGX-N-2-88](#) [GSX-NS2-88-3.05](#) [GSX-NS2-88-3.05-50](#) [GSX-NS-88-3.05-30](#) [GSX-NS-88-3.05-50](#) [GSX-NS-88-3.68](#) [1-1775629-2](#) [GWLX-S-88-GR](#) [GWLX-S9-88-YG](#) [1300500326](#) [1300500227](#) [1300530003](#) [1300570002](#) [1324640-4](#) [RJ11FTVC2G](#) [RJ11FTVC2N](#) [RJFTVX2SA1G](#) [132764-001](#) [1400000](#) [1413235](#)