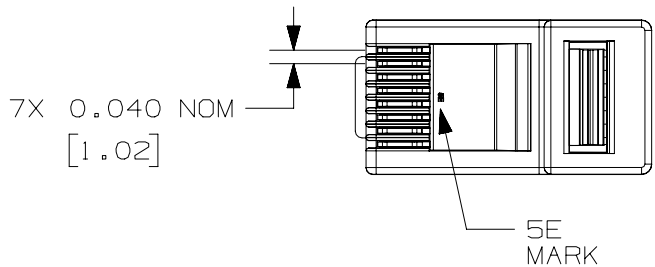
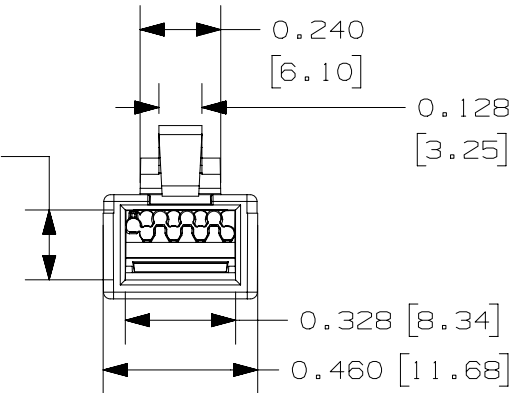
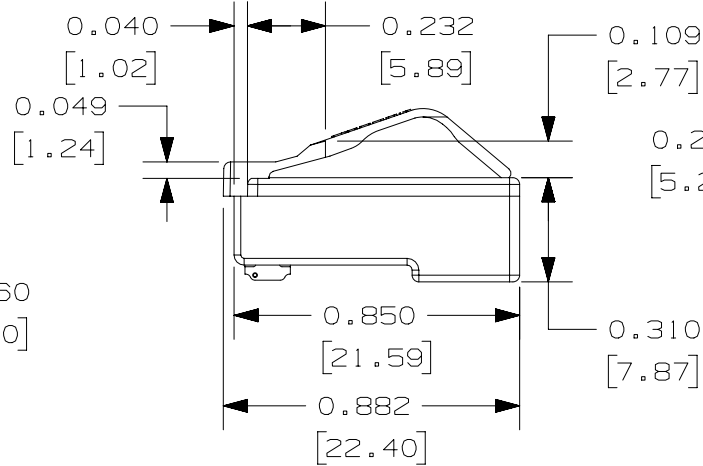
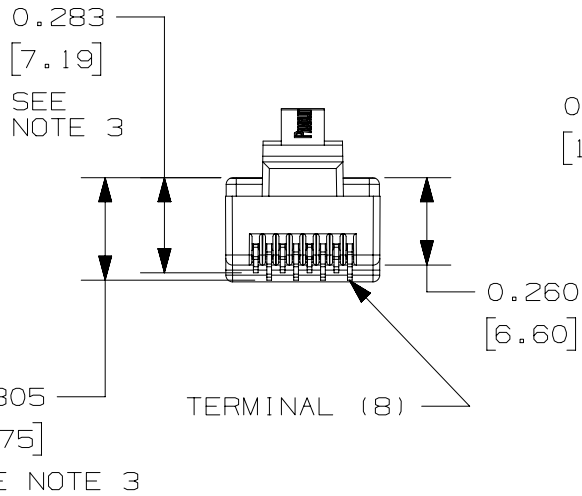


THIS COPY IS PROVIDED ON A RESTRICTED BASIS AND IS NOT TO BE USED IN ANY WAY DETRIMENTAL TO THE INTERESTS OF PANDUIT CORP.

NOTES:

- VISIT OUR ON-LINE CATALOG AT WWW.PANDUIT.COM FOR A LIST OF CURRENT PARTS APPLICABLE FOR USE WITH THIS PRODUCT.
- DIMENSIONS IN [] ARE METRIC.
- DIMENSIONS REPRESENT AN UNTERMINATED PLUG. TERMINATED DIMENSIONS: 0.237±0.005"
- SEE TABLE 1 FOR WEIGHT OF PRODUCT.
- SEE TABLE 1 FOR PACKAGED QUANTITIES.
- MATERIAL:
 - HOUSING: POLYCARBONATE (PC) W/ UL94V-0 FLAME RATING, COLOR: CLEAR W/ BLUE TINT.
 - CONTACTS: BASE MATERIAL: PHOSPHOR BRONZE PLATED WITH GOLD.
- TERMINATES MOST 24-26AWG STRANDED OR SOLID CONDUCTORS WITH A MAXIMUM INSULATOR DIAMETERS BETWEEN 0.035" OF 0.040"
- SEE INSTALLATION INSTRUCTIONS FOR PROPER TERMINATION METHODS.
- OPERATING TEMPERATURE: 14°F TO 140°F (-10°C TO 60°C)
- STORAGE TEMPERATURE: -40°F TO 158°F (-40°C TO 70°C)
- CERTIFICATION LISTINGS: UL1863 AND C22.2.
- ALL MATERIALS AND COMPONENTS USED MEET THE MATERIAL RESTRICTIONS OF RoHS (EUROPEAN DIRECTIVE 2011/65/EU ON THE RESTRICTION OF HAZARDOUS SUBSTANCES) AS PROPOSED BY THE RoHS TECHNICAL ADAPATION COMMITTEE.



PART NUMBER	PACKAGED QUANTITY	(LBS)	(GRAMS)
MP588-L	50	0.18	82.05
MP588-C	100	0.36	164.10
MP588-M	1000	3.62	1641.00

WEIGHT/QUANTITY OF 10: 0.036 LBS [16.41 g]

PART NUMBER		SEE TABLE 1	
TITLE			
PAN-PLUG HIGH PERFORMANCE UTP MODULAR PLUG			
CUSTOMER DRAWING			
ITEM REVISION NAME		D35123AL/01	
DATASET FILE NAME		D35123AL_DC17/01A	
UNLESS OTHERWISE SPECIFIED, DIMENSIONAL TOLERANCES ARE: IN [mm]		MATERIAL:	
.x ± .xx ± .03 [.8]		SEE NOTE 6	
.xxx ± .010 [.3]		DRAWING NUMBER:	
ANGLES ±		35123-17	
THIRD ANGLE PROJECTION		SHT 1 OF 1	
DRAWN BY	DATE	CHK	SCALE
LZ	9-14-00	RAV	NONE
REV			SIZE
A			A

REV	DATE	BY	CHK	APR	DESCRIPTION	ECN
6	8-16-18	BJN	DCS	TMBA	UPDATED CAD MODEL TO REV 01	35123-17
5	6-19-14	JSP	REFR	EJH	REVISED AND REDRAWN, PREVIOUS REVISIONS HAVE BEEN OMITTED.	35123-17

D10100DA/14

X-ON Electronics

Largest Supplier of Electrical and Electronic Components

Click to view similar products for [Modular Connectors / Ethernet Connectors](#) category:

Click to view products by [Panduit](#) manufacturer:

Other Similar products are found below :

[8949-H88/06BLKA/SN](#) [74441-0010/BKN](#) [MP1010RX-1000](#) [MP44RX-1000](#) [PHP-6P6C-5](#) [GAX-3-66](#) [GAX-8-62](#) [GDCX-PA-66-50](#) [GDCX-PN-64](#) [GDCX-PN-66](#) [GDCX-PN-66-50](#) [GDLX-A-66](#) [GDLX-N-66](#) [GDLX-S-66](#) [GDLX-S-88K](#) [GDTX-S-88-50](#) [GDX-PA-1010](#) [GLX-N-1010M-BLK](#) [GLX-S-88M-BLK](#) [GMX-N-1010](#) [GMX-S-1010](#) [GMX-S-66](#) [GMX-SMT4-N-88](#) [GPX-2-64](#) [GSGX-N-2-88](#) [GSGX-N-4-88](#) [GSX-NS2-88-3.05](#) [GSX-NS2-88-3.05-50](#) [GSX-NS-88-3.05-50](#) [PT-108A-8C-UL](#) [PT-J951-8C](#) [PTS-J531-8CS-50UL](#) [1-1775629-2](#) [A-2014-0-4](#) [GWLX-S-88-GR](#) [GWLX-S9-88-YG](#) [DC-1021-8-WH-6](#) [1300530003](#) [1324640-4](#) [RJ11FTVC2G](#) [RJ11FTVC2N](#) [RJFTVX2SA1G](#) [132764-001](#) [1413235](#) [MP88X-1000](#) [MPS88RX-5000](#) [E5288-S000K3-L](#) [E5908-15A242-L](#) [155302-001](#) [AX100653](#)