

# RJ45 Plug Latch Guard

## specifications

The RJ45 plug latch guard with a pull tab shall protect and prevent the accidental removal of RJ45 plugs installed in high density areas such as switches, servers and high density patch panels by securing the latch on the plugs. The plug latch guard shall include a "pull tab" for easy access and removal. It shall be compatible with but not limited to Panduit Cat 5e and Cat 6 UTP modular plugs.



### RJ45 Plug Latch Guard

**RJ45 Plug Latch Guard**  
(pkg. of 10): PLGUARD-X†  
**RJ45 Plug Latch Guard**  
(pkg. of 100): PLGUARD-C†

### Compatible Products for use with the RJ45 Plug Latch Guard:

#### TX6™ PLUS Modular Plug

**24 AWG, Unshielded:** SP688-C  
**28 AWG, Unshielded:** SP628-C  
**30 AWG, Unshielded:** SP630-C

#### TX5e™ Cat 5e Modular Plug

**24 AWG, Unshielded:** MP588-†  
**28 AWG, Unshielded:** MP528-†  
**30 AWG, Unshielded:** MP530-†

#### TX6™ 10Gig™ Cat 6A Patch Cords

**26 AWG, Unshielded:** UTP6ASD^\*\*  
**28 AWG, Unshielded (feet):** UTP28X^\*\*  
**28 AWG, Unshielded (meter):** UTP28X^M\*\*

#### TX6™ PLUS Cat 6 UTP Patch Cords

**24 AWG, CM (feet):** UTPSP^\*\*Y  
**24 AWG, CM (meter):** UTPSP^M\*\*Y  
**24 AWG, LSZH (meter):** UTPSPL^M\*\*Y  
**28 AWG (feet):** UTP28SP^\*\*  
**28 AWG (meter):** UTP28SP^M\*\*

#### TX5e™ Cat 5e UTP Patch Cords

**24 AWG, CM (feet):** UTPCH^\*\*Y  
**24 AWG, CM (meter):** UTPCH^M\*\*Y  
**24 AWG, LSZH (meter):** UTPCHL^M\*\*Y  
**28 AWG (feet):** UTP28CH^\*\*  
**28 AWG (meter):** UTP28CH^M\*\*

† For additional colors, add:  
RD (Red) or YL (Yellow).  
PLGUARDRD-X (-C) for Red or  
PLGUARDYL-X (-C) for Yellow

† Package quantities include:

-X for 10

-L for 50

-C for 100

-M for 1000.

^ - Foot lengths

\*\* - Standard colors

Contact customer service or visit [www.panduit.com](http://www.panduit.com) for available standard module colors and/or patch cord colors and lengths.

NOTE: Not recommended for 24 AWG Cat 6A Patch Cords - UTP6A^\*\* and STP patch cords and plugs.

## technical information

<b>Dimensions:</b>	2.0" (49.89mm) L x .5" (13.84) W x .5" (13.84) W
<b>Operating temperature:</b>	-10° C to 60° C (14° F to 140° F)
<b>Storage temperature:</b>	-40° C to 70° C (-40° F to 158° F)
<b>Material:</b>	Polypropylene (PP); UL94V0 rated (milky white color)
<b>RoHS compliance:</b>	Compliant

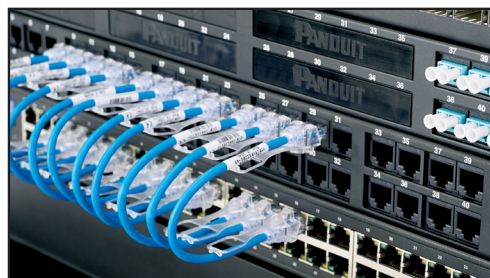
## key features and benefits

<b>Pull tab</b>	Patent-pending feature that allows easy removal of the guard from the plug without disconnecting the plug
<b>Visible status lights</b>	The innovative design allows visibility of status lights or any information etched on the servers, jack modules and plugs
<b>Keys not required</b>	This product does not require a key for removal, saving time while still preventing accidental removal
<b>Multiple installation options</b>	Can be mounted in two different ways based on usage and preference
<b>Latch Protection</b>	Prevents unintended latch disengagement on adjacent patch cords
<b>Multiple Colors</b>	Available in three colors: Milky White, Red and Yellow. Red can be used to indicate "Do Not Touch" and Yellow to indicate "Proceed with caution"

## applications

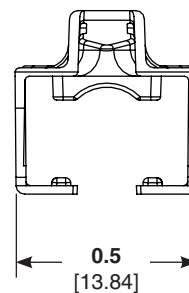
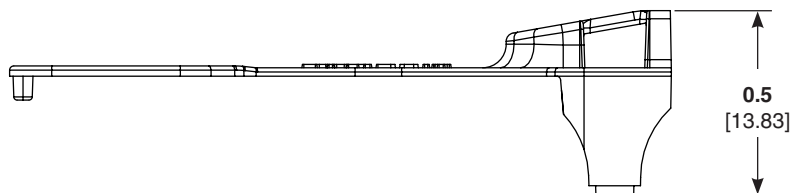
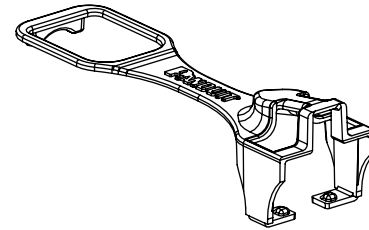
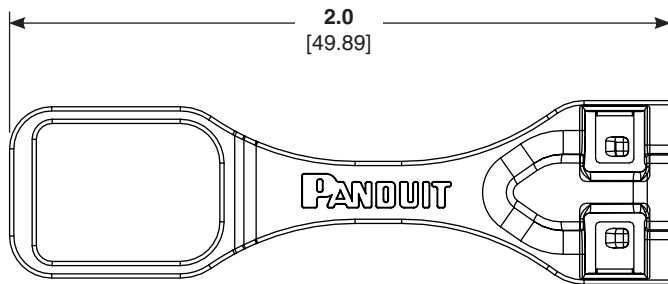
RJ45 Plug Latch Guard has an innovative (patent pending) design which prevents the loss of network connectivity/data due to the accidental disconnection of plugs in high density spaces around switches, servers, and patch panels. Access to these high density places pose a challenge and may result in disconnection of neighboring patch cords by becoming disturbed and/or jostled.

The RJ45 Plug Latch Guard includes a pull tab and a main body which is designed to protect patch cords by wrapping around the plug and securing it in place when installed. Patch cords can only be detached after the latch guard is removed by pulling on the tab which is easily accessible. This user-friendly product allows easy installation and removal of the guard from the plug thus saving time and money.



# RJ45 Plug Latch Guard

## RJ45 Plug Latch Guard (dimensions)



### WORLDWIDE SUBSIDIARIES AND SALES OFFICES

PANDUIT CANADA  
Markham, Ontario  
cs-cdn@panduit.com  
Phone: 800.777.3300

PANDUIT EUROPE LTD.  
London, UK  
cs-emea@panduit.com  
Phone: 44.20.8601.7200

PANDUIT SINGAPORE PTE. LTD.  
Republic of Singapore  
cs-ap@panduit.com  
Phone: 65.6305.7575

PANDUIT JAPAN  
Tokyo, Japan  
cs-japan@panduit.com  
Phone: 81.3.6863.6000

PANDUIT LATIN AMERICA  
Guadalajara, Mexico  
cs-la@panduit.com  
Phone: 52.33.3777.6000

PANDUIT AUSTRALIA PTY. LTD.  
Victoria, Australia  
cs-aus@panduit.com  
Phone: 61.3.9794.9020

For a copy of Panduit product warranties, log on to [www.panduit.com/warranty](http://www.panduit.com/warranty)

For more information

Visit us at [www.panduit.com](http://www.panduit.com)

Contact Customer Service by email: [cs@panduit.com](mailto:cs@panduit.com)  
or by phone: 800.777.3300

**PANDUIT**<sup>®</sup>

© 2015 Panduit Corp.  
ALL RIGHTS RESERVED.  
COSP385--WW-ENG  
8/2015

## X-ON Electronics

Largest Supplier of Electrical and Electronic Components

*Click to view similar products for [Wire Ducting](#) category:*

*Click to view products by [Panduit](#) manufacturer:*

Other Similar products are found below :

[66200A-10](#) [CVED32VEPG](#) [CVED40VEPG](#) [F512D5-5F140Y](#) [F512D5-5F200Y](#) [F512D5-5F26Y](#) [F512D5-5F30Y](#) [F512D5-5F33Y](#) [F512D5-5F34Y](#) [F512D5-5F45Y](#) [F512D5-5F50Y](#) [F512D5-5F54Y](#) [F512D5-5F66Y](#) [F512D5-5F70Y](#) [F512D5-5F75Y](#) [F512D5-5F90Y](#) [F612D5-5F100Y](#) [F612D5-5F130Y](#) [F612D5-5F50Y](#) [F612D5-5F56Y](#) [F612D5-5F58Y](#) [F6L12D5-5F46](#) [F912D5-5F11Y](#) [F912D5-5F170Y](#) [F912D5-5F175Y](#) [F912D5-5F230Y](#) [F912D5-5F300Y](#) [F912D5-5F55Y](#) [F912D5-5F56Y](#) [F912D5-5F63Y](#) [F912D5-5F6Y](#) [F912D5-5F75Y](#) [F912D5-5F85Y](#) [F912D5-5F86Y](#) [F912D5-5F88Y](#) [F912D5-5F96Y](#) [FAP0047WBLMTP](#) [FAP12WBRDRDDLZ](#) [FAP12WDYLYLDLZ](#) [FAP12WEORORDLZ](#) [FAP6WEORORDLZ](#) [FAP6WFDBDBDLZ](#) [FAP8WEORORDLZ](#) [FCE2UWCL](#) [800A-LB](#) [802A-ECSP](#) [802I-ICSP](#) [FJQADH](#) [FJQFXT](#) [PED10](#)