

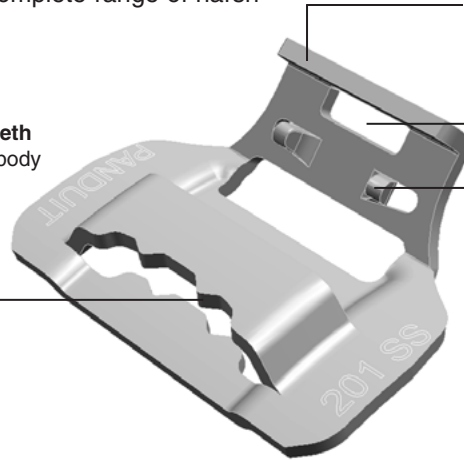
Pan-Steel® MS75 Metal Strapping System

Mechanical fastening applications demand high quality systems that can withstand harsh environments while maintaining a safe and secure physical infrastructure. Severe weather, intense UV rays, high vibration, and galvanic corrosion are all variables that can sacrifice performance and create safety hazards. Panduit offers innovative solutions that provide reliable fastening of critical components which allows businesses to minimize risk and enhance productivity.

The Pan-Steel® MS75 Metal Strapping System is now available in 201 and 316 stainless steel to deliver maximum performance, high strength, and enhanced job site safety, ideal for the Sign and Signal, Oil and Gas, and Industrial markets. Designed to work together in extreme conditions, the MS75 metal strapping, buckles, and installation tool reduce installation time by as much as 50%, when compared to competitive offerings. This system is part of the complete range of harsh environment solutions available from Panduit.



Buckle Bridge Teeth
Deliver additional body slip resistance for optimum strength



Hooked Clamping Tab
Provides full coverage of cut end of strap for enhanced safety

Buckle Screwdriver Slot
Allows use of screwdriver for buckle closure for a simple quick installation

Buckle Locking Tabs Patented
Improved locking mechanism for higher strength

Key Features

Benefits

Key Features	Benefits
MS75 Strapping and Buckles	
Buckle locking tabs	Improved locking mechanism for higher strength
Buckle screwdriver slot	Allows use of screwdriver for buckle closure for a simple, quick installation
Hooked clamping tab	Provides full coverage of cut end of strap for enhanced safety
Buckle bridge teeth	Deliver additional body slip resistance for optimum strength
Fully assembled 201 stainless steel discrete lengths	Eliminates assembly, reducing installation time by as much as 50%, when compared to competitive designs
Weather resistant packaging for coils	Maintains package integrity when compared to the traditional cardboard carton for improved water resistance and durability
Smooth surfaces and rounded edges	Assures worker safety and bundle protection from abrasion during and after installation
Compatible with industry standard tools	No new installation tools are required
BT75SDT MS75 Strapping Installation Tool	
Screw drive tension mechanism	Provides high tension to secure bundle with minimal handle effort, for improved productivity
Robust design	Heavy duty construction offers a long term service life

Pan-Steel® MS75 Metal Strapping System

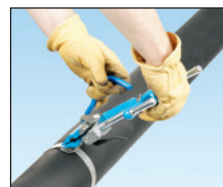
Simple 5-Step Installation Process Reduces Installation Time and Installed Costs



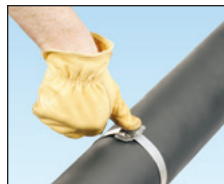
1) Place strap around the material, insert tail of strap through buckle. Pull strapping tight and bend up to hold in place.



2) Insert tail of strapping into tool nose section. Rotate handle to tension.



3) After tensioning, raise tool 90° – 120° over buckle and pull down on cutter lever, cutting strap.



4) Remove tool, press cut end down toward retaining tab.

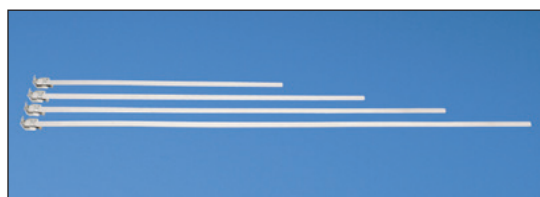


5) Using a flathead screwdriver, bend retaining tab down and over cut end.

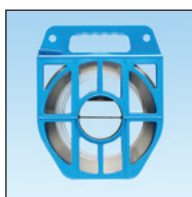
Provides finished, safe, and secure closure.



Ordering Information



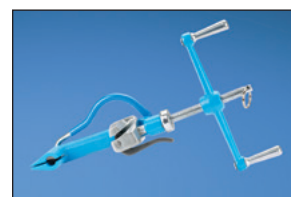
MS75 Strapping in four Discrete Lengths



MS75 Strapping in Weather Resistant Packaging



MS75 Buckles



MS75 Installation Tool

Part Number	Max. Bundle Diameter				Length				Strap Breaking Strength		Min. Bundle Diameter		Width		Thickness		Recommended Installation Tool	Std. Pkg. Qty. [^]	
	Single Loop		Double Loop																
	In.	mm	In.	mm	In.	mm	Lbs.	N	In.	mm	In.	mm	In.	mm					
MS75 Metal Strapping – Discrete Lengths (Stainless Steel Type 201 Only)																			
MS4W75T30-Q2	4.0	102	2.0	51	20.2	513	2400	10656	2.0	51	0.75	19.1	0.03	0.76	BT75SDT	25			
MS6W75T30-Q2	6.0	152	3.0	76	26.5	673	2400	10656	2.0	51	0.75	19.1	0.03	0.76	BT75SDT	25			
MS8W75T30-Q2	8.0	203	4.0	102	32.7	831	2400	10656	2.0	51	0.75	19.1	0.03	0.76	BT75SDT	25			
MS10W75T30-Q2	10.0	254	5.0	127	39.0	991	2400	10656	2.0	51	0.75	19.1	0.03	0.76	BT75SDT	25			

Part Number	Material	Length		Strap Breaking Strength		Min. Bundle Diameter		Width		Thickness		Recommended Installation Tool	Used with Buckle	Std. Pkg. Qty. [^]
		In.	M	Lbs.	N	In.	mm	In.	mm	In.	mm			
MS75 Metal Strapping – Coil														
MSW75T30-CR2	Stainless Steel Type 201	100	30.5	2400	10656	2.0	51	0.75	19.1	0.03	0.76	BT75SDT	MSBW75-C2	1
MSW75T30-CR6	Stainless Steel Type 316	100	30.5	2400	10656	2.0	51	0.75	19.1	0.03	0.76	BT75SDT	MSBW75-C6	1

Part Number	Material	Width		Part Description	Std. Pkg. Qty. [^]
		In.	mm		
MS75 Metal Strapping – Buckles					
MSBW75-C2	Stainless Steel Type 201	1.64	41.8	Individual buckles used with 3/4" custom length strapping.	100
MSBW75-C6	Stainless Steel Type 316	1.64	41.8	Individual buckles used with 3/4" custom length strapping.	100

BT75SDT Installation Tool for MS75 Strapping

Part Number	Part Description	Std. Pkg. Qty. [^]
BT75SDT	Installation tool for use with .75" width strapping only. Tensions and cuts strapping. Screwdriver required for buckle closure not included.	1

[^]Order number of pieces required in multiples of Standard Package Quantity.

WORLDWIDE SUBSIDIARIES AND SALES OFFICES

PANDUIT CANADA
Markham, Ontario
cs-cdn@panduit.com
Phone: 800.777.3300

PANDUIT EUROPE LTD.
London, UK
cs-emea@panduit.com
Phone: 44.20.8601.7200

PANDUIT SINGAPORE PTE. LTD.
Republic of Singapore
cs-ap@panduit.com
Phone: 65.6305.7575

PANDUIT JAPAN
Tokyo, Japan
cs-japan@panduit.com
Phone: 81.3.6863.6000

PANDUIT LATIN AMERICA
Guadalajara, Mexico
cs-la@panduit.com
Phone: 52.33.777.6000

PANDUIT AUSTRALIA PTY. LTD.
Victoria, Australia
cs-aus@panduit.com
Phone: 61.3.9794.9020

For a copy of Panduit product warranties, log on to www.panduit.com/warranty

For more information

Visit us at www.panduit.com

Contact Customer Service by email: cs@panduit.com
or by phone: 800.777.3300 and reference SSCB26



©2015 Panduit Corp.
ALL RIGHTS RESERVED.
Printed in the U.S.A.
SSCB27--SA-ENG
Replaces SA-SSCB26
12/2015

X-ON Electronics

Largest Supplier of Electrical and Electronic Components

Click to view similar products for [Cable Ties](#) category:

Click to view products by [Panduit](#) manufacturer:

Other Similar products are found below :

[65037-C](#) [770-1751-10](#) [REL50L0C2](#) [20093-0](#) [SF600-120X](#) [SJ3518FR-1x50](#) [SJ3526N-Beige-2"x50yd](#) [SJ3526N BLACK 58" X 50YD](#) [SJ3571](#)
[SJ-3571-1"x50yd-Black](#) [PLT2S-C4](#) [34-455-C](#) [3722](#) [561-B110120](#) [561-N3510](#) [TYZ528M](#) [34-463-C](#) [URT20S-M](#) [06226](#) [08350-0](#) [08600-0](#)
[08376-0](#) [10037-0](#) [10325-0](#) [10362-0](#) [10606-0](#) [1122-4JW8](#) [561-EZ250](#) [561-EZ625](#) [SJ3527N-Beige-2"x50yd](#) [SJ3527N-LOOP-BLACK-1](#)
[SJ3572-2"x50yd-Black](#) [CF5625-000](#) [65004-C](#) [65005-C](#) [65007-C](#) [65036-C](#) [157-00039](#) [770-1708](#) [770-1753-10](#) [770-1752](#) [SPNY-041-9](#)
[SF400-120X](#) [3719](#) [08582-0](#) [08386-0](#) [10431-0](#) [08359-0](#) [10620-0](#) [10345-0](#)