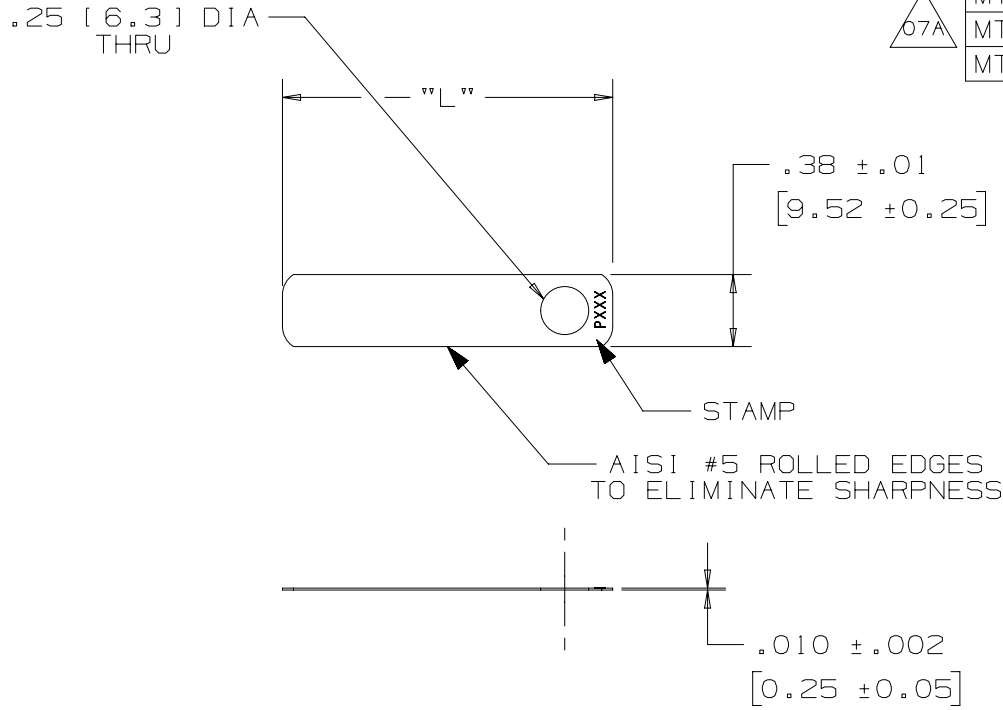


THIS COPY IS PROVIDED ON A RESTRICTED BASIS AND IS NOT TO BE USED IN ANY WAY DETRIMENTAL TO THE INTERESTS OF PANDUIT CORP.

PANDUIT PART NUMBER	MATERIAL	PACKAGE QUANTITY	LENGTH = "L" ±.02	STAMP
MT172W38-C	304 SS	100	1.72 [43]	P304
MT350W38-CQ316	316 SS	125	3.50 [89]	P316
MT172W38-M	304 SS	1000	1.72 [43]	P304



NOTES:

- BRACKETS [] DENOTES DIMENSIONS IN MILLIMETERS
- CUSTOM PERMANENT MARKING AVAILABLE. CONSULT FACTORY

07A	5/4/18	RVU	JW	JHAC	MT350W38-CQ316 WAS MT350W38-C316. 125 was 100.	GAECN04598
06A	12/11/17	RVU	JW	JHAC	ADD MT172W38-M TO THE TABLE.	GAECN04430
05A	3/13	JAMB	MIM	RGRO	UPDATE DRAWING TO NEW PANDUIT TITLE BLOCK WITH PANDUIT LOGO	SSECN01031
04	5/05	JAMB	EJD	JJB	ADDED PART NO. MT350W38-C316	12679
03	10/03	BRH	DPN	JJB	REMOVED PART NO. MT350W38 FROM TABLE	11168
02	5/02	JAMB	DPN	JJB	MATERIAL FOR PART NO. MT172W38-C WAS 302 SS STAP WAS "P302"	10040
01	1/01	KMD	JAC	JAC	REMOVED MT 172W-38-C316 & MT350W38-C FROM TABLE . CAD FILE SPEC WAS NPC_S41063_00	09063
00	11/91	SM	JAC	LA	RELEASED	00679

TITLE		MATERIAL:	
METAL TAGS - 1 HOLE		STAINLESS STEEL	
CUSTOMER DRAWING			
ITEM REVISION NAME		DRAWING NUMBER:	
N41063BS/07		N41063BS_DC	
DATASET FILE NAME		UNLESS OTHERWISE SPECIFIED, DIMENSIONAL TOLERANCES ARE: IN [mm]	
N41063BS_DC/07A		.x ± .1 [2.54] .xxx ± .005 [.127] .xx ± .01 [.25] ANGLES ± 5 °	
		THIRD ANGLE PROJECTION	
DRAWN BY	DATE	CHK	SCALE
SAM	11-11-91	JAC	1:1
REV	DATE	BY	CHK
DESCRIPTION		ECN	SIZE
			A

REV	DATE	BY	CHK	APR	DESCRIPTION	ECN

X-ON Electronics

Largest Supplier of Electrical and Electronic Components

Click to view similar products for [Wire Labels & Markers](#) category:

Click to view products by [Panduit](#) manufacturer:

Other Similar products are found below :

[89078GBEST](#) [89082GBESR](#) [89082GBEST](#) [PCL025-4](#) [5761-2SF](#) [58400](#) [586R734H02](#) [M1.040.0000.6](#) [CRS-CM5M](#) [CRS-M18M](#) [CS1836-000](#) [CS8626-000](#) [CU6337-000](#) [CU6342-000](#) [CU6343-000](#) [CWD01-0](#) [CWD012-0](#) [CWD012-7](#) [CWD015-3](#) [CWD015-7](#) [CWD02-0](#) [CWD02-3](#) [CWD02-4](#) [CWD02-6](#) [CWD02-8](#) [CWD02-A](#) [CWD02-D](#) [CWD02-H](#) [CWD02-K](#) [CWD02-L](#) [CWD02-M](#) [CWD02-P](#) [CWD02-Q](#) [CWD02-R](#) [CWD02-U](#) [CWD02-W](#) [CWD02-Y](#) [CWD03-+](#) [CWD03-0](#) [CWD03-P](#) [CWD06-0](#) [CWD06-8](#) [CWD06-9](#) [CWD06-L](#) [CWD06-N](#) [CWD09-0](#) [CWD09-5](#) [CWD09-7](#) [6806810001](#) [CZ2857-000](#)