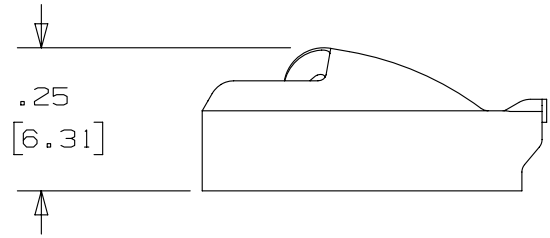
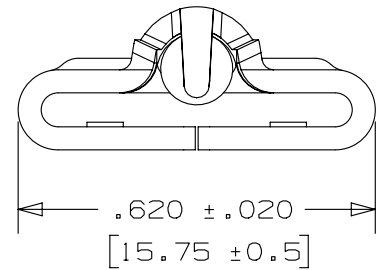
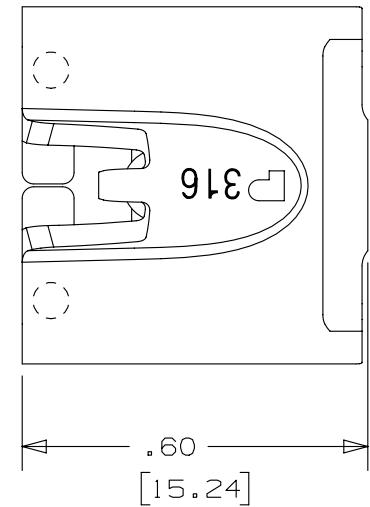


THIS COPY IS PROVIDED ON A RESTRICTED BASIS AND IS NOT TO BE USED IN ANY WAY DETRIMENTAL TO THE INTERESTS OF PANDUIT CORP.

NOTES:

1. TO BE USED WITH PANDUIT METAL BANDING MBCEH-QR316
2. INSTALLATION TOOLS: RT2HT, ST2MT, PBTMT, RT2HTN
3. BRACKETS [] DENOTES DIMENSIONS IN MILLIMETERS
4. MINIMUM LOOP TENSILE STRENGTH: 300 LBS (1335 newtons)
5. TOLERANCES: .X = ±.030 [.762]
 .XX = ±.020 [.508]
 .XXX = ±.010 [.254]
 ANGLES = ±2°
6. MATERIAL: 316 STAINLESS STEEL



REV	DATE	BY	CHK	APR	DESCRIPTION	ECN
02A	4/13	JAMB	MIM	RGRO	UPDATE DRAWING TO NEW GLOBAL PANDUIT TITLE BLOCK WITH PANDUIT LOGO	SSECN01047
01A	7/11	JAMB	MIM	---	REMOVED INSTALLATION TOOL ST3MT. ADDED INSTALLATION TOOL ST2MT, PBTMT, RT2HTN	----
00A	10/08	JAMB	SKB	---	ORIG CAD FILE SPEC WAS S41197_00. NOTE 2: APPLICATION TOOL RT1HT REPLACED BY RT2HT	----
00	9/05	JAMB	EJD	---	DRAWING RELEASED	SS00053

TITLE		METAL LOCKING TIE HEAD - EXTRA HEAVY DUTY - FOR FULLY COATED BANDING PART NUMBER MTHCEH-C316		
CUSTOMER DRAWING				
ITEM REVISION NAME		N41197BS/02		
DATASET FILE NAME		N41197BS_DC/02A		
UNLESS OTHERWISE SPECIFIED, DIMENSIONAL TOLERANCES ARE: IN [mm]		 MATERIAL: SEE NOTES		
.x ± .1 [2.54] .xxx ± .005 [.127] .xx ± .01 [.25] ANGLES ± 5 °				
 THIRD ANGLE PROJECTION		DRAWING NUMBER: N41197BS_DC		
DRAWN BY	DATE	CHK	SCALE	SIZE
JAMB	9/16/05	EJD	3:1	A
SHT 1 OF 1				

X-ON Electronics

Largest Supplier of Electrical and Electronic Components

Click to view similar products for [Cable Ties](#) category:

Click to view products by [Panduit](#) manufacturer:

Other Similar products are found below :

[65037-C](#) [770-1751-10](#) [REL50L0C2](#) [20093-0](#) [SF600-120X](#) [SJ3518FR-1x50](#) [SJ3526N-Beige-2"x50yd](#) [SJ3526N BLACK 58" X 50YD](#) [SJ3571](#)
[SJ-3571-1"x50yd-Black](#) [PLT2S-C4](#) [34-455-C](#) [3722](#) [561-B110120](#) [561-N3510](#) [TYZ528M](#) [34-463-C](#) [URT20S-M](#) [06226](#) [08350-0](#) [08600-0](#)
[08376-0](#) [10037-0](#) [10325-0](#) [10362-0](#) [10606-0](#) [1122-4JW8](#) [561-EZ250](#) [561-EZ625](#) [SJ3527N-Beige-2"x50yd](#) [SJ3527N-LOOP-BLACK-1](#)
[SJ3572-2"x50yd-Black](#) [CF5625-000](#) [65004-C](#) [65005-C](#) [65007-C](#) [65036-C](#) [157-00039](#) [770-1708](#) [770-1753-10](#) [770-1752](#) [SPNY-041-9](#)
[SF400-120X](#) [3719](#) [08582-0](#) [08386-0](#) [10431-0](#) [08359-0](#) [10620-0](#) [10345-0](#)