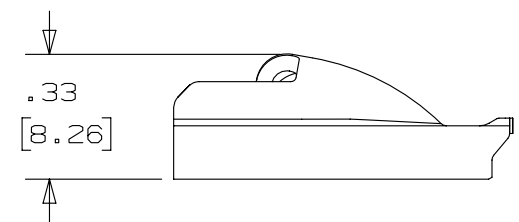
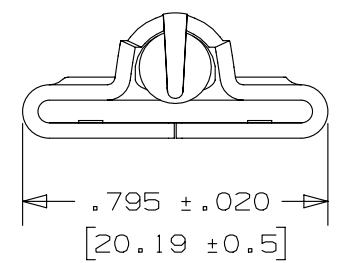
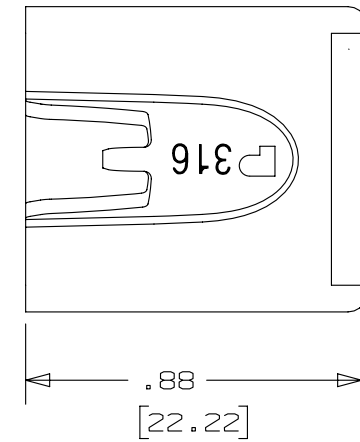


THIS COPY IS PROVIDED ON A RESTRICTED BASIS AND IS NOT TO BE USED IN ANY WAY DETRIMENTAL TO THE INTERESTS OF PANDUIT CORP.

NOTES:

1. TO BE USED WITH PANDUIT METAL BANDING MBCSH-QR316
2. INSTALLATION TOOLS: RT2HT, PBTMT, RT2HTN
3. BRACKETS [ ] DENOTES DIMENSIONS IN MILLIMETERS
4. MINIMUM LOOP TENSILE STRENGTH: 450 LBS (2002N)
5. TOLERANCES:
  - .X = ±.030 [ .762 ]
  - .XX = ±.020 [ .508 ]
  - .XXX = ±.010 [ .254 ]
  - ANGLES = ±2°
6. MATERIAL: 316 STAINLESS STEEL



REV	DATE	BY	CHK	APR	DESCRIPTION	ECN
02A	4/13	JAMB	MIM	RGRO	UPDATE DRAWING TO NEW GLOBAL PANDUIT TITLE BLOCK WITH PANDUIT LOGO	SSECN01049
01A	7/11	JAMB	EJD	---	REMOVED INSTALLATION TOOL RT1HT. ADDED INSTALLATION TOOLS RT2HT,PBTMT & RT2HTN	----
00	8/05	JAMB	EJD	---	DRAWING RELEASED	SS00030

TITLE <b>METAL LOCKING TIE HEAD – SUPER HEAVY DUTY – FOR FULLY COATED BANDING PART NUMBER MTHCSH-C316</b> CUSTOMER DRAWING			
ITEM REVISION NAME N41198BS/02			
DATASET FILE NAME N41198BS_DC/02A			
UNLESS OTHERWISE SPECIFIED, DIMENSIONAL TOLERANCES ARE: IN [ mm ] .x ± .1 [ 2.54 ]      .xxx ± .005 [ .127 ] .xx ± .01 [ .25 ]      ANGLES ± 5 °		MATERIAL: SEE NOTES	
THIRD ANGLE PROJECTION		DRAWING NUMBER: N41198BS_DC	
DRAWN BY JAMB	DATE 8/23/05	CHK EJD	SCALE 2:1
SHT 1 OF 1		SIZE A	

## X-ON Electronics

Largest Supplier of Electrical and Electronic Components

*Click to view similar products for [Cable Ties](#) category:*

*Click to view products by [Panduit](#) manufacturer:*

Other Similar products are found below :

[65037-C](#) [770-1751-10](#) [REL50L0C2](#) [20093-0](#) [SF600-120X](#) [SJ3518FR-1x50](#) [SJ3526N-Beige-2"x50yd](#) [SJ3526N BLACK 58" X 50YD](#) [SJ3571](#)  
[SJ-3571-1"x50yd-Black](#) [PLT2S-C4](#) [34-455-C](#) [3722](#) [561-B110120](#) [561-N3510](#) [TYZ528M](#) [34-463-C](#) [URT20S-M](#) [06226](#) [08350-0](#) [08600-0](#)  
[08376-0](#) [10037-0](#) [10325-0](#) [10362-0](#) [10606-0](#) [1122-4JW8](#) [561-EZ250](#) [561-EZ625](#) [SJ3527N-Beige-2"x50yd](#) [SJ3527N-LOOP-BLACK-1](#)  
[SJ3572-2"x50yd-Black](#) [CF5625-000](#) [65004-C](#) [65005-C](#) [65007-C](#) [65036-C](#) [157-00039](#) [770-1708](#) [770-1753-10](#) [770-1752](#) [SPNY-041-9](#)  
[SF400-120X](#) [3719](#) [08582-0](#) [08386-0](#) [10431-0](#) [08359-0](#) [10620-0](#) [10345-0](#)