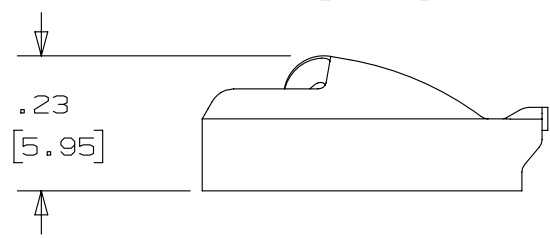
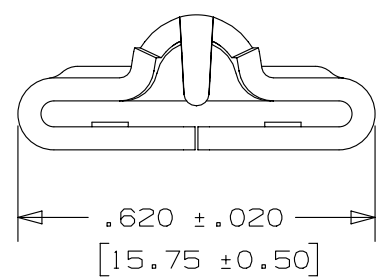
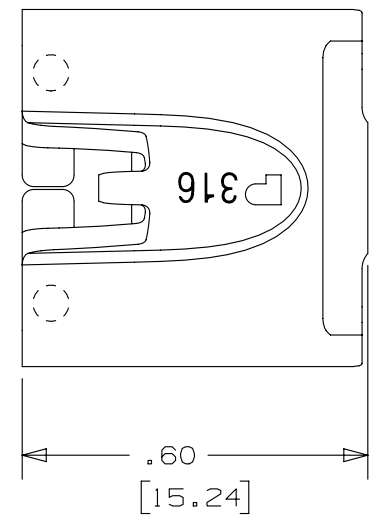


THIS COPY IS PROVIDED ON A RESTRICTED BASIS AND IS NOT TO BE USED IN ANY WAY DETRIMENTAL TO THE INTERESTS OF PANDUIT CORP.

NOTES:

1. TO BE USED WITH PANDUIT METAL BANDING MBEH-TLR316.
2. INSTALLATION TOOLS: RT2HT, ST2MT, PBTMT, RT2HTN
3. BRACKETS [] DENOTES DIMENSIONS IN MILLIMETERS.
4. MINIMUM LOOP TENSILE STRENGTH: 300 LBS (1335 newtons)
5. TOLERANCES:
 - .X = ±.030 [.762]
 - .XX = ±.020 [.508]
 - .XXX = ±.010 [.254]
 - ANGLES = ±2°
6. MATERIAL: 316 STAINLESS STEEL



REV	DATE	BY	CHK	APR	DESCRIPTION	ECN
02A	4/13	JAMB	MIM	RGRO	UPDATE DRAWING TO NEW GLOBAL PANDUIT TITLE BLOCK WITH PANDUIT LOGO	SSECN01049
01A	7/11	JAMB	MIM	---	REMOVED INSTALLATION TOOL ST3MT. ADDED INSTALLATION TOOLS ST2MT, PBTMT, RT2HTN	-----
00A	10/08	JAMB	SKB	---	ORIG CAD FILE SPEC WAS S41203_00. NOTE #2 APPLICATION TOOL RT1HT REPLACED BY RT2HT	-----
00	9/05	JAMB	EJD	---	DRAWING RELEASED	SS00053

TITLE METAL LOCKING TIE HEAD-EXTRA HEAVY DUTY FOR UNCOATED BANDING PART NO. MTEH-C316 CUSTOMER DRAWING					
ITEM REVISION NAME N41203BS/02					
DATASET FILE NAME N41203BS_DC/02A					
UNLESS OTHERWISE SPECIFIED, DIMENSIONAL TOLERANCES ARE: IN [mm] .x ± .1 [2.54] .xxx ± .005 [.127] .xx ± .01 [.25] ANGLES ± 5 °			MATERIAL: SEE NOTES		
THIRD ANGLE PROJECTION			DRAWING NUMBER: N41203BS_DC		
DRAWN BY JAMB	DATE 9/16/05	CHK EJD	SCALE 3:1	SHT 1 OF 1	
					SIZE A

X-ON Electronics

Largest Supplier of Electrical and Electronic Components

Click to view similar products for [Cable Mounting & Accessories](#) category:

Click to view products by [Panduit](#) manufacturer:

Other Similar products are found below :

[582603-1](#) [009333-000](#) [727844N003](#) [747](#) [809090N001](#) [843188-000](#) [8666](#) [967279N002](#) [DB-11](#) [1300840039](#) [1300900096](#) [1301800416](#)
[1302264450](#) [1300830184](#) [1300830729](#) [1300900039](#) [1301580036](#) [1301850553](#) [1301860939](#) [1302000074](#) [1302261315](#) [1302264431](#)
[1337706-2](#) [APA18-AK](#) [1724](#) [1-787307-1](#) [185491N001](#) [1868](#) [HP-6N](#) [C-202-C](#) [202C221-13-0](#) [CA7308-000](#) [8S23-75FR-CS8184](#) [2684](#) [9648](#)
[3089](#) [988382-000](#) [A72821-000](#) [AA401](#) [173506-000](#) [1823](#) [202C292-13-0](#) [202C302-13-0](#) [2109](#) [300625](#) [3330](#) [3412](#) [356247-1](#) [M9142](#)
[M9143](#)