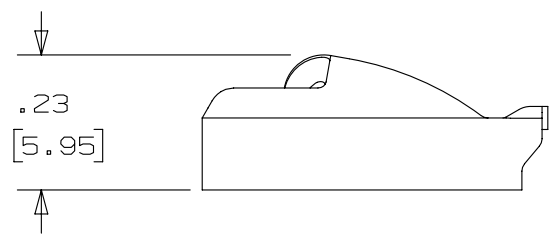
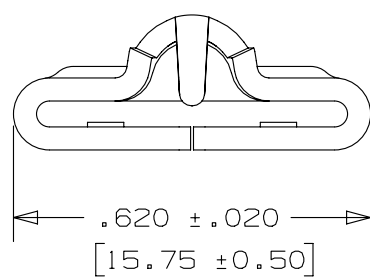
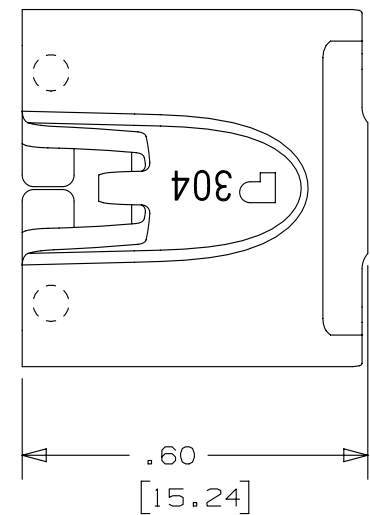


THIS COPY IS PROVIDED ON A RESTRICTED BASIS AND IS NOT TO BE USED IN ANY WAY DETRIMENTAL TO THE INTERESTS OF PANDUIT CORP.

NOTES:

- 1. TO BE USED WITH PANDUIT METAL BANDING MBEH-TLR
- 2. INSTALLATION TOOLS: RT2HT, ST2MT, PBTMT, RT2HTN
- 3. BRACKETS [ ] DENOTES DIMENSIONS IN MILLIMETERS
- 4. MINIMUM LOOP TENSILE STRENGTH: 300 LBS (1335 newtons)
- 5. TOLERANCES:
  - .X = ±.030 [ .762 ]
  - .XX = ±.020 [ .508 ]
  - .XXX = ±.010 [ .254 ]
  - ANGLES = ±2°
- 6. MATERIAL: 304 STAINLESS STEEL



REV	DATE	BY	CHK	APR	DESCRIPTION	ECN
02A	4/13	JAMB	MIM	RGRO	UPDATE DRAWING TO NEW GLOBAL PANDUIT TITLE BLOCK WITH PANDUIT LOGO	SSECN01049
01A	7/11	JAMB	MIM	---	REMOVED INSTALLATION TOOLS ST3MT. ADDED INSTALLATION TOOL ST2MT, PBTMT & RT2HTN	-----
00A	10/08	JAMB	SKB	---	ORIG CAD FILE SPEC WAS S41211-00. NOTE 2: APPLICATION TOOL RT1HT REPLACED BY RT2HT	-----
00	9/05	JAMB	EJD	---	DRAWING RELEASED	SS00053

TITLE		METAL LOCKING TIE HEAD - EXTRA HEAVY DUTY FOR UNCOATED BANDING PART NO. MTHEH-C	
		CUSTOMER DRAWING	
ITEM REVISION NAME		N41211BS/02	
DATASET FILE NAME		N41211BS_DC/02A	
UNLESS OTHERWISE SPECIFIED, DIMENSIONAL TOLERANCES ARE: IN [ mm ]		MATERIAL:	
.x ± .1 [ 2.54 ]      .xxx ± .005 [ .127 ]		SEE NOTES	
.xx ± .01 [ .25 ]      ANGLES ± 5 °		DRAWING NUMBER:	
		N41211BS_DC	
DRAWN BY	DATE	CHK	SCALE
JAMB	9/16/05	EJD	3:1
SHT 1 OF 1			SIZE
			A

## X-ON Electronics

Largest Supplier of Electrical and Electronic Components

*Click to view similar products for [Cable Ties](#) category:*

*Click to view products by [Panduit](#) manufacturer:*

Other Similar products are found below :

[65037-C](#) [770-1751-10](#) [REL50L0C2](#) [20093-0](#) [SF600-120X](#) [SJ3518FR-1x50](#) [SJ3526N-Beige-2"x50yd](#) [SJ3526N BLACK 58" X 50YD](#) [SJ3571](#)  
[SJ-3571-1"x50yd-Black](#) [PLT2S-C4](#) [34-455-C](#) [3722](#) [561-B110120](#) [561-N3510](#) [TYZ528M](#) [34-463-C](#) [URT20S-M](#) [06226](#) [08350-0](#) [08600-0](#)  
[08376-0](#) [10037-0](#) [10325-0](#) [10362-0](#) [10606-0](#) [1122-4JW8](#) [561-EZ250](#) [561-EZ625](#) [SJ3527N-Beige-2"x50yd](#) [SJ3527N-LOOP-BLACK-1](#)  
[SJ3572-2"x50yd-Black](#) [CF5625-000](#) [65004-C](#) [65005-C](#) [65007-C](#) [65036-C](#) [157-00039](#) [770-1708](#) [770-1753-10](#) [770-1752](#) [SPNY-041-9](#)  
[SF400-120X](#) [3719](#) [08582-0](#) [08386-0](#) [10431-0](#) [08359-0](#) [10620-0](#) [10345-0](#)