

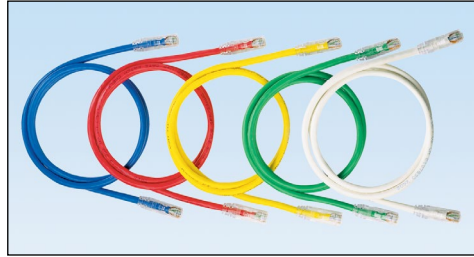
NetKey® Category 6A UTP Patch Cords

PANDUIT®

DATA SHEET

specifications

Category 6A/Class E_A F/UTP patch cords are constructed of 26 AWG shielded twisted pair stranded copper cable with a UTP modular plug on each end. Patch cords are offered in multiple colored F/UTP cable for design flexibility with a strain relief boot on each modular plug. All patch cords are wired to be compatible with both T568A and T568B wiring schemes.



technical information

Category 6A/Class E_A performance:	Exceeds ANSI/TIA-568-C.2 Category 6A and ISO 11801 Class E _A channel requirements at swept frequencies up to 500 MHz Meets ANSI/TIA-568-C.2 and ISO 11801 Category 6A component requirements at swept frequencies up to 500 MHz
Cable diameter:	0.252 in. (6.3mm) nominal
FCC compliance:	Complies with ANSI/TIA-1096-A (formerly FCC Part 68); contacts plated with 50 microinches of gold for superior performance
IEC compliance:	Meets IEC 60603-7
PoE compliance:	Supports IEEE 802.3af/802.3at and proposed 802.3bt type 3 and type 4 PoE applications
Safety compliance:	cULus Listed; UL 1863 and CAN/CSA-C22.2 (UL File E129886)
RoHS compliance:	Compliant
Flammability rating:	CM/LSZH dual rated

key features and benefits

100% performance tested for wiremap, NEXT, and return loss	Confidence that each patch cord delivers specified performance
Integral pair manager	Optimizes performance and consistency by reducing untwist at plug
Patented tangle free latch	Prevents snags and provides easy release saving time on frequent moves, adds, and changes
Slender strain relief boot	Provides easy access in high-density applications
Identification	Provides identification of performance level, length, and quality control number for future traceability
Variety of colors and lengths available	Meets individual length and color-coding requirements

applications

The NetKey® Category 6A UTP Patch Cords are a component of the NetKey® Category 6A Copper Cabling System. Interoperable and backward compatible, this end-to-end system provides design flexibility to protect network investments well into the future.

Key applications include:

- 10GBASE-T Ethernet
- Wireless deployment
- Power over Ethernet
- Video streaming

NetKey® Network Components

NetKey® Category 6A UTP Patch Cords

Foot lengths: NK6APC3*
Meter lengths: NK6APC1M**

NetKey® Category 6A Jack Module

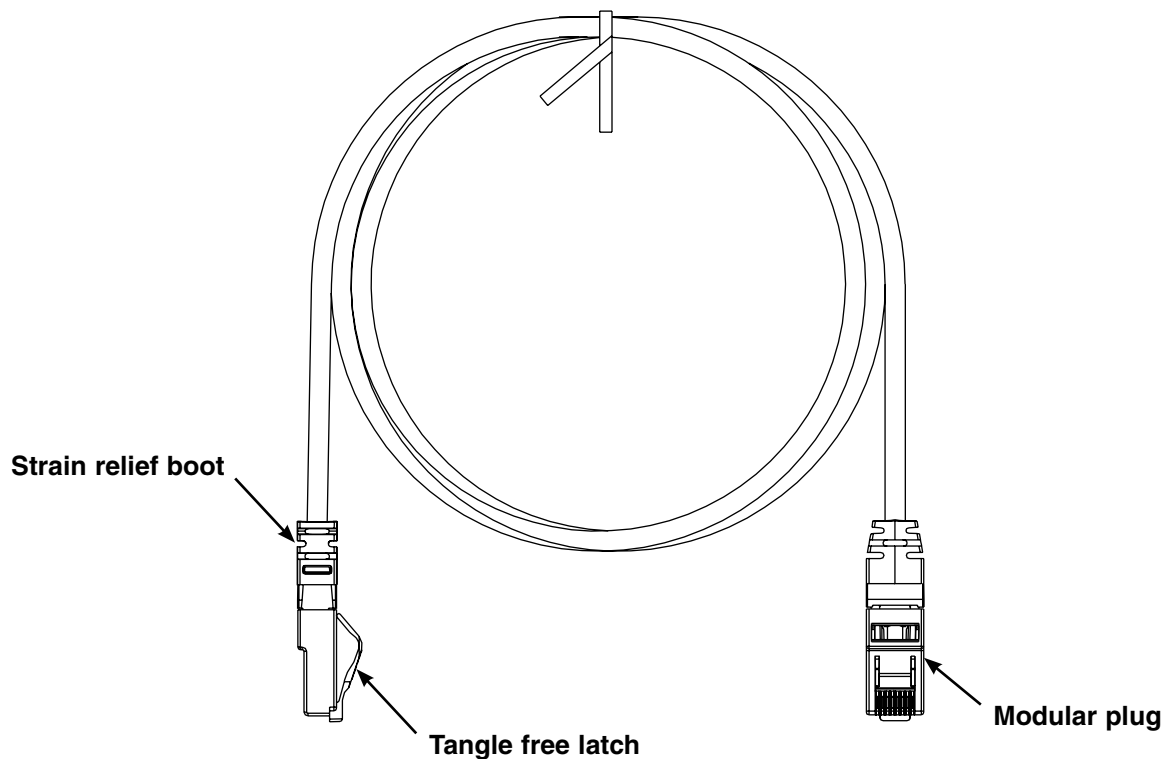
Punchdown Module: NK6X88M**

*For standard lengths other than 3 feet (5, 7, 10, 14, 20, 25, 30, 40, or 50) change the length designation in part number to the desired length. For standard cable colors other than Off White, add suffix BL (Black), BU (Blue), RD (Red), YL (Yellow), GR (Green), or GY (Gray) at the end of the part number. For example, the part number for a blue 5 foot patch cord is NK6APC5BU.

**For standard lengths other than 1 meter (2, 3, 4, 5, 7, 10, 12, or 15) change the length designation in part number to the desired length. For standard cable colors other than Off White, add suffix BL (Black), BU (Blue), RD (Red), YL (Yellow), GR (Green), or GY (Gray) at the end of the part number. For example, the part number for a blue 5 meter patch cord is NK6APC5MBU.

^To designate a color, add suffix IW (Off White), EI (Electric Ivory), IG (Int'l Gray), WH (White), BL (Black), OR (Orange), RD (Red), BU (Blue), GR (Green), or YL (Yellow).

NetKey® Category 6A UTP Patch Cords



WORLDWIDE SUBSIDIARIES AND SALES OFFICES

PANDUIT CANADA
Markham, Ontario
cs-cdn@panduit.com
Phone: 800.777.3300

PANDUIT EUROPE LTD.
London, UK
cs-emea@panduit.com
Phone: 44.20.8601.7200

PANDUIT SINGAPORE PTE. LTD.
Republic of Singapore
cs-ap@panduit.com
Phone: 65.6305.7575

PANDUIT JAPAN
Tokyo, Japan
cs-japan@panduit.com
Phone: 81.3.6863.6000

PANDUIT LATIN AMERICA
Guadalajara, Mexico
cs-la@panduit.com
Phone: 52.33.3777.6000

PANDUIT AUSTRALIA PTY. LTD.
Victoria, Australia
cs-aus@panduit.com
Phone: 61.3.9794.9020

For a copy of Panduit product warranties, log on to www.panduit.com/warranty

For more information

Visit us at www.panduit.com

Contact Customer Service by email: cs@panduit.com
or by phone: 800.777.3300

PANDUIT®

©2015 Panduit Corp.
ALL RIGHTS RESERVED.
NKDS56--WW-ENG
10/2015

X-ON Electronics

Largest Supplier of Electrical and Electronic Components

Click to view similar products for [Wire Ducting & Raceways](#) category:

Click to view products by [Panduit](#) manufacturer:

Other Similar products are found below :

[FG5EI25-A](#) [PED12](#) [PED8](#) [PEVEP](#) [FXOE3-10M3](#) [FZD3-3M2](#) [FZLE10-10M2](#) [FZOE10-10M1](#) [FZOLE10-10M2](#) [FZPE3-10M2](#) [923223-000](#)
[PRAF6WH-X](#) [A0405538](#) [1301150342](#) [1301230083](#) [1301150343](#) [1301230086](#) [1301240054](#) [AX101472](#) [AX102652](#) [AX102653](#) [AX102737](#)
[S62DS](#) [S65DS](#) [S75DSH](#) [A0405536](#) [A0405537](#) [A0649869](#) [FXOD3-3M1](#) [FXOE10-10M2](#) [FZLD3-3M2](#) [FZOE3-10M1](#) [FZOE3-10M2](#)
[FZOLE3-10M2](#) [FZOPE10-10M1](#) [FZPD3-3M2](#) [PZRFE4](#) [PZWIFIEN](#) [PZWIFIENA](#) [CNPSNH](#) [CNSPC](#) [5400ES](#) [WDLT-1216-72](#) [655287-000](#)
[S75DS](#) [1301180028](#) [801A-LSP](#) [TGECAW](#) [206461-000](#) [853425-000](#)