

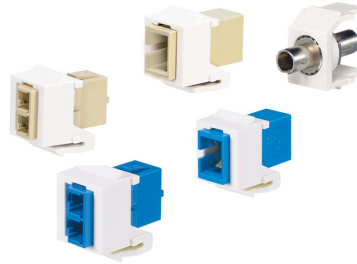
NetKey® Fiber Optic Adapter Modules



DATA SHEET

specifications

LC, SC and ST fiber optic adapters have integrated panel retention clips and are TIA/EIA-604 compliant or compatible. Each simplex adapter will connect one connector pair in one module space and each duplex adapter will connect two LC connector pairs in one module space. LC fiber optic adapters and adapter modules include phosphor bronze split sleeves for OM1 or OM2 multimode applications or zirconia ceramic split sleeves for OM3 multimode or singlemode applications.



technical information

Standards requirements:	All adapters meet or exceed TIA/EIA-455-21 and TIA/EIA-568-C.3 requirements: LC: TIA/EIA-604 FOCIS-10 compatible SC: TIA/EIA-604 FOCIS-3 compliant ST: TIA/EIA-604 FOCIS-2 compatible
Split sleeve material:	Zirconia ceramic: OM3 multimode adapters, OS1/OS2 singlemode adapters Phosphor bronze: OM1 and OM2 multimode adapters
Insertion loss:	Supports the performance of connectors/patch cords
Return loss:	Supports singlemode and multimode connector polish performance

key features and benefits

Integrated panel retention clips:	No metal clips to become bent, damaged or lost; simplex adapter clips automatically adjust for FOCIS-3 or FOCIS-10 panel thickness variations for improved mounting
Short flange design (LC and SC only):	Improved modularity and higher density usage
Choice of phosphor bronze or zirconia ceramic split sleeves:	Provides an adapter split sleeve material option to fit specific network requirements
Adapters available in keystone modules:	System flexibility; modules are interchangeable with keystone outlets, boxes, and patch panels
Adapters and modules available in multiple colors:	Allows color-coding for network segregation

applications

- Can be used with keystone telecommunications room products and work area outlets
- Provides a rugged solution for LANs, public networks and fiber-to-the-desk applications

NetKey® LC Duplex Fiber Optic Adapter Module

LC duplex adapter with phosphor bronze split sleeve: NKDLCM**

LC duplex adapter with zirconia split sleeve: NKDLCMZ**

NetKey® SC Simplex Fiber Optic Adapter Module

SC simplex adapter with phosphor bronze split sleeve: NKSCM**

SC simplex adapter with zirconia split sleeve: NKSCMZ**

NetKey® ST Fiber Optic Adapter Modules

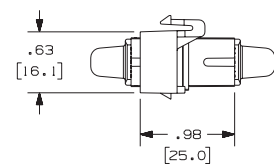
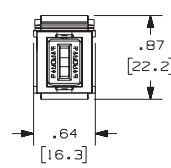
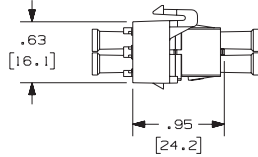
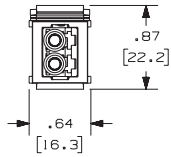
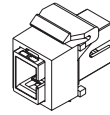
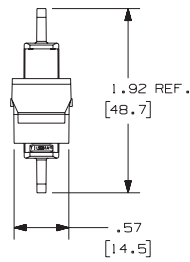
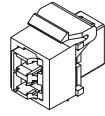
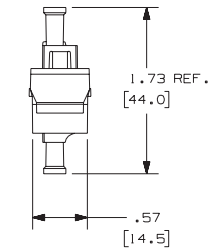
ST adapter with phosphor bronze split sleeve: NKSTM**

NetKey® Module Multimedia Panel – 6 port

Unloaded panel accepts up to six NetKey® Modules: FKP6

** Substitute for module color
BL = Black
EI = Electric Ivory
IG = International Gray
IW = Off White
WH = White
AQ = Aqua

NetKey® Fiber Optic Adapter Modules

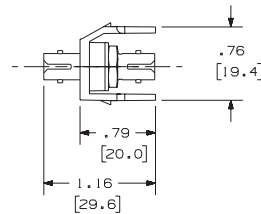
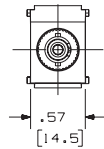
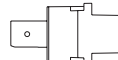
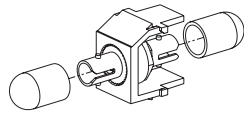


NKDLCM**

Shown without dust caps

NKSCM**

Shown without dust caps



NKSTM**

** Substitute for module color BL = Black, EI = Electric Ivory, IG = International Gray, IW = Off White, WH = White

WORLDWIDE SUBSIDIARIES AND SALES OFFICES

PANDUIT CANADA
Markham, Ontario
Phone: 800.777.3300

PANDUIT EUROPE LTD.
London, UK
Phone: 44.20.8601.7200

PANDUIT SINGAPORE PTE. LTD.
Republic of Singapore
Phone: 65.6305.7575

PANDUIT JAPAN
Tokyo, Japan
Phone: 81.3.6863.6000

PANDUIT LATIN AMERICA
Guadalajara, Mexico
Phone: 52.33.3777.6000

PANDUIT AUSTRALIA PTY. LTD.
Victoria, Australia
Phone: 61.3.9794.9020

For a copy of Panduit product warranties, log on to www.panduit.com/warranty

PANDUIT®

Visit us at www.panduit.com/ia
iai@panduit.com

© 2016 Panduit Corp.
ALL RIGHTS RESERVED.
NKDS20--WW-ENG
11/11/2016

X-ON Electronics

Largest Supplier of Electrical and Electronic Components

Click to view similar products for [Fibre Optic Connectors](#) category:

Click to view products by [Panduit](#) manufacturer:

Other Similar products are found below :

[0004700001](#) [6100-R](#) [6313](#) [F709034706](#) [F709722200](#) [F709730000](#) [F718183204](#) [F727403500](#) [F727752800](#) [8119](#) [9440F20-27S-190](#) [944-120-6001](#) [9441F10SL-3S](#) [9444W28-21S](#) [9444W36-10S](#) [9446F10SL-4S](#) [9446W20-16S](#) [953-101-5310-P](#) [954-101-57202B](#) [A0270169](#) [12-9122](#) [12-5702](#) [AX101713](#) [AX102420](#) [AX103923](#) [AX104024](#) [AX104193](#) [AX104230](#) [AX104562](#) [AX105203-B25](#) [AX105205-S1](#) [EHSC2M](#) [17-300800](#) [181-011-126](#) [181-011-S](#) [181-057-126](#) [HRFC-R2\(40\)](#) [NKSOPBUY](#) [20500002116](#) [2064996-1](#) [20800001065](#) [2170](#) [9132](#) [2612](#) [2620](#) [9291](#) [9440F16-10S](#) [9440F20-18S](#) [9446F16-10S-190](#) [953-106-50231](#)