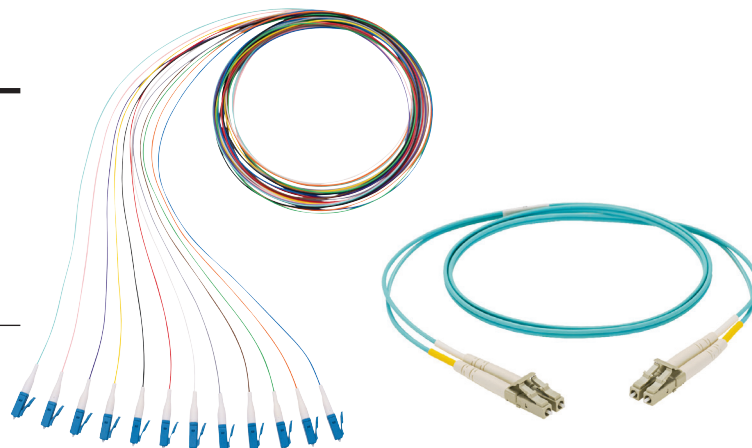


# NetKey® Fiber Optic Patch Cords and Pigtails – OFNR and LSZH

## technical information

NetKey® Fiber Optic Patch Cords include duplex LC, SC, and ST connectors on both ends and pigtails include simplex LC, SC, and ST on one end, and open (un-terminated) on the other end. Patch cords and pigtails meet requirements of TIA/EIA-568-C.3-1. The fiber connectors are FOCIS compliant or compatible and meet the requirements of TIA/EIA-455-21A. Quality control reference label provides lifetime traceability of test data.



## application

Provide interconnect and cross-connect of applications in entrance facilities, telecommunications rooms, data centers, and at the desk. Support network applications to interconnect pre-terminated cassettes in main distribution, horizontal distribution, and equipment distribution areas. Riser rated patch cords support installations that require this flame rating in specific environments.

## standards

**Standards requirements:** TIA/EIA 568-C.3-1 and ISO/IEC 61755-3-1 IEC-61754-7 (International)  
TIA-604-2-A, -3-A, and -10-A  
FOCIS -2, -3, and -10

## construction

<b>Fiber Size:</b>	Pigtails:	900µm tight-buffered fiber
	Patch Cords:	1.6mm, 2.0mm, and 3.0mm duplex jacketed zip cord cable
<b>Cable Jacket Ratings:</b>	Riser (OFNR):	Per UL 1666 and c(UL) FT-4
	Low Smoke Zero Halogen (LSZH):	Per IEC 60332-1, IEC 60754-2, IEC 61034
<b>Connector Types:</b>	LC, SC, and ST	
<b>Jacket Color:</b>	OS2:	Yellow
	OM1:	Orange
	OM2:	Orange
	OM3:	Aqua
	OM4:	Aqua
<b>Fiber Types:</b>	Singlemode:	OS2 9/125µm
	Multimode:	OM1 62.5/125µm
		OM2 50/125µm
		OM3 50/125µm
		OM4 50/125µm
<b>Ferrule Material:</b>	Zirconia Ceramic	

## optical properties

<b>Insertion Loss:</b>	All fiber types:	0.30dB max.
<b>Return Loss:</b>	OS2:	50dB min.
	OM1:	20dB min.
	OM2:	20dB min.
	OM3:	26dB min.
	OM4:	26dB min.

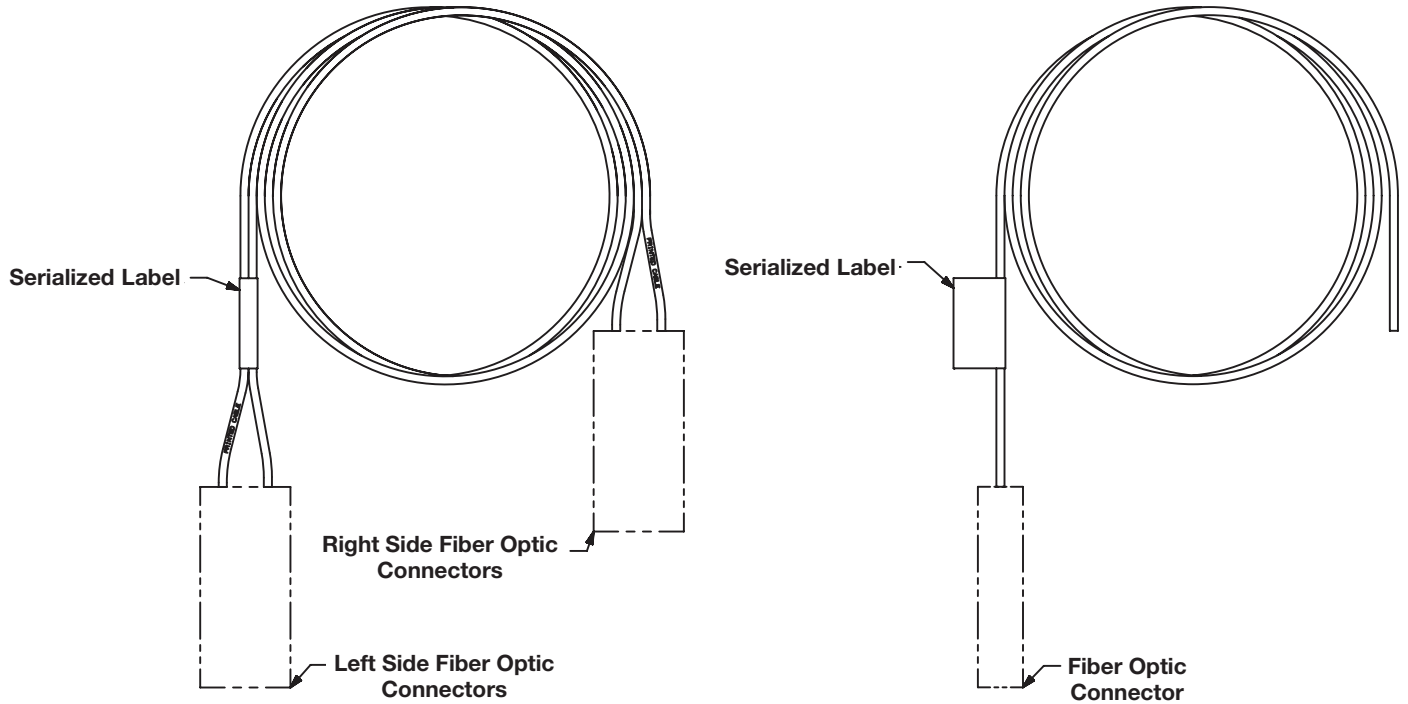
# NetKey® Fiber Optic Patch Cords and Pigtails – OFNR and LSZH

NetKey® Patch Cords			
Part Number	Connector Type	Flame Rating	Lengths*(meters)
<b>OM4 Multimode Duplex Patch Cords</b>			
NKFPZ22RLLSM001	LC-LC	OFNR	1-10m, 15m, 20m
NKFPZ22LLLSM001	LC-LC	LSZH	1-10m, 15m, 20m
<b>OM3 Multimode Duplex Patch Cords</b>			
NKFPX2ERLLSM001	LC-LC	OFNR	1 - 15m, 20,25,30,35,40,45,50m
NKFPX2ERLSSM001	LC-SC	OFNR	1 - 15m, 20,25,30,35,40,45,50m
NKFPX23RSSM001	SC-SC	OFNR	1 - 5m, 10,15,20m
NKFPX23R22SM001	ST-ST	OFNR	1 - 5m, 10,15,20m
NKFPX2ELLLSM001	LC-LC	LSZH	1 - 15m, 20,25,30,35,40,45,50m
NKFPX2ELLSSM001	LC-SC	LSZH	1 - 15m, 20,25,30,35,40,45,50m
NKFPX23LSSM001	SC-SC	LSZH	1 - 5m, 10,15,20m
NKFPX23L22SM001	ST-ST	LSZH	1 - 5m, 10,15,20m
<b>OM2 Multimode Duplex Patch Cords</b>			
NKFP52ERLLSM001	LC-LC	OFNR	1 - 5m, 10,15,20m
NKFP52ERLSSM001	LC-SC	OFNR	1 - 5m, 10,15,20m
NKFP523RSSM001	SC-SC	OFNR	1 - 5m, 10,15,20m
NKFP523R22SM001	ST-ST	OFNR	1 - 5m, 10,15,20m
NKFP52ELLLSM001	LC-LC	LSZH	1 - 5m, 10,15,20m
NKFP52ELLSSM001	LC-SC	LSZH	1 - 5m, 10,15,20m
NKFP523LSSM001	SC-SC	LSZH	1 - 5m, 10,15,20m
NKFP523L22SM001	ST-ST	LSZH	1 - 5m, 10,15,20m
<b>OM1 Multimode Duplex Patch Cords</b>			
NKFP62ERLLSM001	LC-LC	OFNR	1 - 5m, 10,15,20m
NKFP62ERLSSM001	LC-SC	OFNR	1 - 5m, 10,15,20m
NKFP623RSSM001	SC-SC	OFNR	1 - 5m, 10,15,20m
NKFP623R22SM001	ST-ST	OFNR	1 - 5m, 10,15,20m
NKFP62ELLLSM001	LC-LC	LSZH	1 - 5m, 10,15,20m
NKFP62ELLSSM001	LC-SC	LSZH	1 - 5m, 10,15,20m
NKFP623LSSM001	SC-SC	LSZH	1 - 5m, 10,15,20m
NKFP623L22SM001	ST-ST	LSZH	1 - 5m, 10,15,20m
<b>OS2 Singlemode Duplex Patch Cords</b>			
NKFP92ERLLSM001	LC-LC	OFNR	1 - 15m, 20,25,30,35,40,45,50m
NKFP92ERLSSM001	LC-SC	OFNR	1 - 15m, 20,25,30,35,40,45,50m
NKFP923RSSM001	SC-SC	OFNR	1 - 5m, 10,15,20m
NKFP923R22SM001	ST-ST	OFNR	1 - 5m, 10,15,20m
NKFP92ELLLSM001	LC-LC	LSZH	1 - 15m, 20,25,30,35,40,45,50m
NKFP92ELLSSM001	LC-SC	LSZH	1 - 15m, 20,25,30,35,40,45,50m
NKFP923LSSM001	SC-SC	LSZH	1 - 5m, 10,15,20m
NKFP923L22SM001	ST-ST	LSZH	1 - 5m, 10,15,20m

NetKey® Pigtails		
Part Number	Connector Type	Lengths*(meters)
<b>OM4 Pigtails</b>		
NKFPZ1BN1NNM001	LC	1m & 2m
<b>OM3 Pigtails</b>		
NKFPX1BN1NNM001	LC	1m & 2m
NKFPX1BN2NNM001	ST	1m
NKFPX1BN3NNM001	SC	1m
<b>OM2 Pigtails</b>		
NKFP51BN1NNM001	LC	1m
NKFP51BN2NNM001	ST	1m
NKFP51BN3NNM001	SC	1m
<b>OM1 Pigtails</b>		
NKFP61BN1NNM001	LC	1m
NKFP61BN2NNM001	ST	1m
NKFP61BN3NNM001	SC	1m
<b>OS2 Pigtails</b>		
NKFP91BN1NNM001	LC	1m & 2m
NKFP91BN2NNM001	ST	1m
NKFP91BN3NNM001	SC	1m
<b>OM4, OM3 and OS2 Pigtails Kits (12-color kits)</b>		
NKFPZ1BN1NKM001	LC	1m
NKFPX1BN1NKM001	LC	1m
NKFP91BN1NKM001	LC	1m

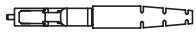
\*Replace last two digits of part number with desired length. Lengths above 20 meters are only available in multiples of 5

# NetKey® Fiber Optic Patch Cords and Pigtails – OFNR and LSZH

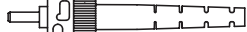


## Netkey Patch Cord

## Netkey Pigtail



Simplex LC



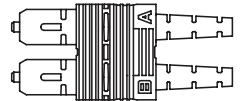
ST



Simplex SC



Duplex LC



Duplex SC

### WORLDWIDE SUBSIDIARIES AND SALES OFFICES

PANDUIT CANADA  
Phone: 800.777.3300

PANDUIT EUROPE LTD.  
London, UK  
cs-emea@panduit.com  
Phone: 44.20.8601.7200

PANDUIT SINGAPORE PTE. LTD.  
Republic of Singapore  
cs-ap@panduit.com  
Phone: 65.6305.7575

PANDUIT JAPAN  
Tokyo, Japan  
cs-japan@panduit.com  
Phone: 81.3.6863.6000

PANDUIT LATIN AMERICA  
Guadalajara, Mexico  
cs-la@panduit.com  
Phone: 52.33.3777.6000

PANDUIT AUSTRALIA PTY. LTD.  
Victoria, Australia  
cs-aus@panduit.com  
Phone: 61.3.9794.9020

For a copy of Panduit product warranties, log on to [www.panduit.com/warranty](http://www.panduit.com/warranty)

For more information

Visit us at [www.panduit.com](http://www.panduit.com)

Contact Customer Service by email: [cs@panduit.com](mailto:cs@panduit.com)  
or by phone: 800.777.3300



©2017 Panduit Corp.  
ALL RIGHTS RESERVED.  
NKDS51--WW-ENG  
4/2017

## X-ON Electronics

Largest Supplier of Electrical and Electronic Components

*Click to view similar products for [Fibre Optic Cable Assemblies](#) category:*

*Click to view products by [Panduit](#) manufacturer:*

Other Similar products are found below :

[7-21002-9](#) [760-1518](#) [FA04390-50-M-72-LC-N](#) [MLB 501 V RED](#) [MLB 501 V YELLOW](#) [1-3636-600-5208](#) [2061529-7](#) [1-6693182-0](#)  
[1754898-1](#) [21055-6](#) [FXBSCSCE2LM002](#) [3000005](#) [3-21053-2](#) [MLB 200/1 V BLACK](#) [5492011-6](#) [106284-7000](#) [5492011-5](#) [5492011-8](#)  
[5492011-9](#) [8-21007-5](#) [2123524-2](#) [2123524-1](#) [106386-4447](#) [DFSM-SCSC-2M](#) [2123909-4](#) [2123909-8](#) [106273-0629](#) [2125046-1](#) [2821236-3](#)  
[2821310-2](#) [2821310-3](#) [2821313-4](#) [FX2ERLNLNSNM0.5](#) [CF-980062-074](#) [CF-901200-394](#) [CF-980062-073](#) [CF-980062-071](#) [CF-980062-075](#)  
[CF-980062-072](#) [17-300310-100](#) [2821236-2](#) [2821313-1](#) [G-FC-FC-S-002.0-DX-A-18-Y](#) [G-E2A-E2A-S-003.0-SX-A-18-Y](#) [956-322-502214](#)  
[FA04474](#) [1083665](#) [1111540](#) [1111843](#) [1115533](#)