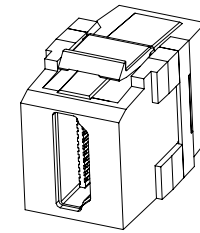
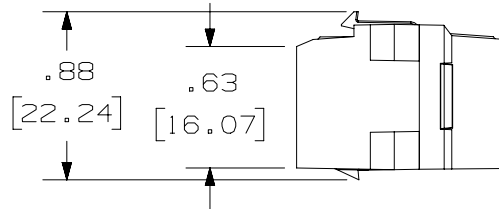
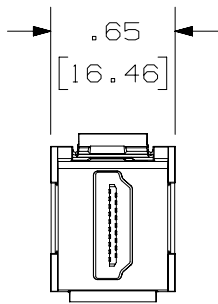
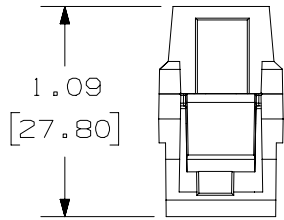


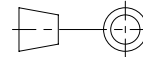
THIS COPY IS PROVIDED ON A RESTRICTED BASIS AND IS NOT TO BE USED IN ANY WAY DETRIMENTAL TO THE INTERESTS OF PANDUIT CORP.

NOTES:

1. VISIT OUR ON-LINE CATALOG AT [WWW.PANDUIT.COM](http://WWW.PANDUIT.COM) FOR A LIST OF CURRENT PARTS APPLICABLE FOR USE WITH THIS PRODUCT.
2. DIMENSIONS IN [ ] ARE METRIC.
3. WEIGHT: 0.02 LB/EACH PC  
19.17 g/ EACH PC
4. PART INCLUDES:
  - 1- CONNECTOR - COPPER, LDPE
  - 2- HOUSING ABS
4. PART IS RoHS COMPLIANT



PART NUMBER		NKHDMI **	
TITLE		NETKEY HDMI 2.0 TYPE A FEMALE TO FEMALE CATEGORY 2 COUPLER CUSTOMER DRAWING	
ITEM REVISION NAME		M03197AB/04	
DATASET FILE NAME		M03197AB_DC13/04A	
MATERIAL		SEE NOTE 4	
DRAWING NUMBER		03197-13	
DRAWN BY		DATE	CHK
MDJR	8-18-09	HMK	SCALE
DESCRIPTION		FULL	
REV	DATE	BY	CHK
1	5-28-19	BJN	VJV
APR		MMR	
DESCRIPTION		ECN	
UPDATED TITLE BLOCK & NOTES, TITLE NOW 2.0, WAS 1.3 REVISED & REDRAWN PREVIOUS REVS REMVD FOR CLARITY		03197-13	
SHEET 1 OF 1		SIZE	
A		A	



THIRD ANGLE  
PROJECTION

**PANDUIT**

A-SIZE CUSTOMER

2

1

2

1

## X-ON Electronics

Largest Supplier of Electrical and Electronic Components

*Click to view similar products for [HDMI Cables](#) category:*

*Click to view products by [Panduit](#) manufacturer:*

Other Similar products are found below :

[426301400-3](#) [68767-0003](#) [CA-MINIDP-HDMIF-10FT](#) [HP-19AFMM-SL7A01](#) [HP-19AFMM-SL7A05](#) [S-HDI-DVI-2](#) [S-HDI-DVI-5](#) [10HM-15128-01](#) [HD0003](#) [31888](#) [31889](#) [31893](#) [31897](#) [31907](#) [31908](#) [31911](#) [31913](#) [31914](#) [31915](#) [31919](#) [31920](#) [31921](#) [31923](#) [31925](#) [31926](#) [31929](#) [31930](#) [31932](#) [31935](#) [31936](#) [31937](#) [31938](#) [CV0036B](#) [CV0038](#) [CV0057B](#) [CV0058](#) [CV0058B](#) [CV0059B](#) [50580](#) [50581](#) [50582](#) [50989](#) [51579](#) [51586](#) [51724](#) [51957](#) [52859](#) [31890](#) [31891](#) [31892](#)