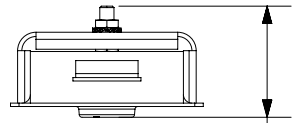
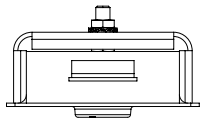


2

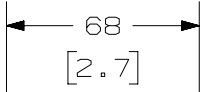
1

THIS COPY IS PROVIDED ON A RESTRICTED BASIS AND IS NOT TO BE USED IN ANY WAY DETRIMENTAL TO THE INTERESTS OF PANDUIT CORP.

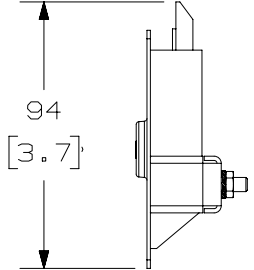
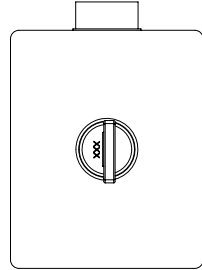
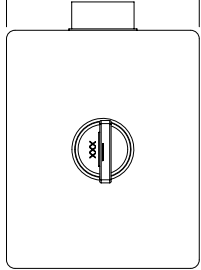
- NOTES:
1. VISIT OUR ONLINE CATALOG AT WWW.PANDUIT.COM FOR A LIST OF CURRENT PARTS APPLICABLE WITH THIS PRODUCT.
  2. DIMENSIONS IN PARENTHESES ARE ENGLISH (in).
  3. LOCK FOR NET-VERSE (D-TYPE) CABINET CAN BE KEYED TO MATCH PART #NVDLOCK-xxx
  4. PARTS SUPPLIED:  
 (2) - SIDE PANEL LOCKS  
 (4) - SIDE PANEL LOCK KEYS, W/2 KEY RINGS  
 (1) - INSTALLATION INSTRUCTION (NOT SHOWN)



39  
[1.5]

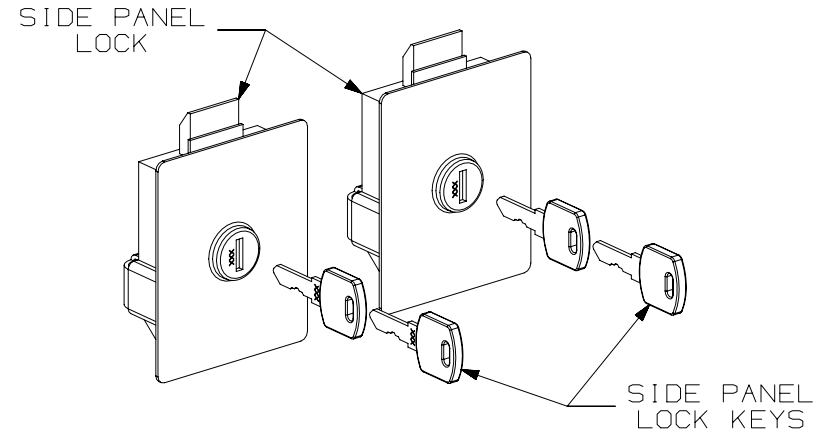


68  
[2.7]



94  
[3.7]

PANDUIT PART NO.	WEIGHT
NVSPLOCK-xxx	0.45 Kg (1.0 LBS)



00A	6/1/18	MEX-JAGC	DWR	SJP	RELEASED TO PRODUCTION						V09001RP/00

TITLE											
SIDE PANEL LOCK ACCESSORY											
CUSTOMER DRAWING											
ITEM REVISION NAME											
00199EAZ/00											
DATASET FILE NAME											
00199EAZ_DC/00A											
MATERIAL:											
N/A											
DRAWING NUMBER:											
00199EAZ-DC											
THIRD ANGLE PROJECTION											
DRAWN BY: MEX-JAGC											
DATE: 6/1/18											
CHK: DWR											
SCALE: NONE											
SHT 1 OF 1											
SIZE: A											

D10100DA/20

2

1

## X-ON Electronics

Largest Supplier of Electrical and Electronic Components

*Click to view similar products for [Racks & Rack Cabinet Accessories](#) category:*

*Click to view products by [Panduit](#) manufacturer:*

Other Similar products are found below :

[M00-PLN](#) [F2424](#) [8351-832-A-24](#) [9104](#) [9105](#) [PLFF2000](#) [H-9163-B](#) [1427C3](#) [HTS10](#) [PC-79](#) [SC10-3A](#) [SC4-28](#) [CG3-340S/12](#) [CP-001BK](#)  
[M6123-4007-SS](#) [TS170](#) [LP40](#) [5261304-07](#) [CG3-160G](#) [7112C-PLN](#) [ALUM](#) [CM10](#) [8610-3124-S-26](#) [TS81](#) [7142](#) [GP134](#) [M6125-4007-A-24](#)  
[M6127-4007-SS](#) [PBCOVER](#) [512](#) [AEG-4000G](#) [AEG-3000G](#) [HD99](#) [SR2-66A2](#) [FP10B4HP-1](#) [SR16-66A2](#) [FP52-2](#) [1406-1006-01](#) [29478](#)  
[TS2535](#) [TS169-6](#) [CAC2](#) [HA19-3U](#) [BR-19-10-1](#) [TS180](#) [CG3-ESD](#) [SC11-1](#) [CFS-1.00/2.20](#) [AX6145WM](#) [HEC0800PB](#) [ZC633R](#)