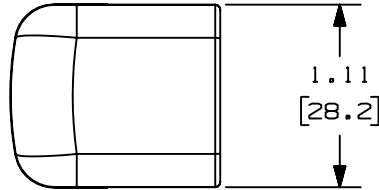


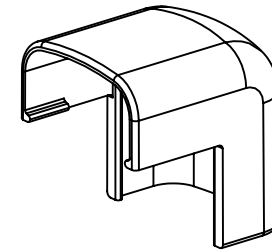
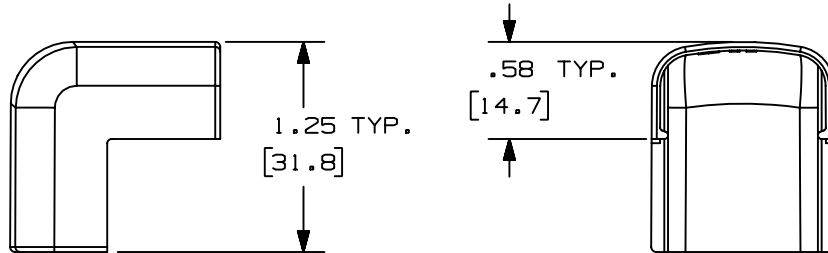
THIS COPY IS PROVIDED ON A RESTRICTED BASIS AND IS NOT TO BE USED IN ANY WAY DETRIMENTAL TO THE INTERESTS OF PANDUIT CORP.



$\triangle B$	PANDUIT P/N	WEIGHT
$\triangle C$	OCF5	0.96 LB/100 PCS. (437g/100 PCS.)

$\triangle D$ NOTES:

1. SEE CURRENT CATALOG FOR ADDITIONAL PART NUMBER SUFFIXES TO INDICATE COLOR AND OR PACKAGE QUANTITY.
2. DIMENSIONS IN PARENTHESIS ARE IN METRIC.



$\triangle E$

CAD FILENAME/LAYERS D34474BB_DC_OCF5_01.prt

					PANDUIT CORP. TINLEY PARK, ILLINOIS		
					OUTSIDE CORNER FITTING (OCF5) CUSTOMER DRAWING		
					UNLESS OTHERWISE SPECIFIED, DIMENSIONAL TOLERANCES ARE:		UNLESS OTHERWISE SPECIFIED, ALL DIMENSIONS ARE GIVEN IN INCHES, THIRD ANGLE PROJECTION.
6	7-3-02	JHN/URMHI	F.	REVISED MATERIAL IN DRAWING TITLE BLOCK.	16866	RGRD	RGRD
5	8-28-00	MSO/HIW	E.	REVISED AND REDRAWN ON CAD.	16866	HIW	HIW
4	10-3-91	DW/CF	D.	REVISED NOTE AND REMOVED COLOR FROM DRAWING.	16866		CF
3	2-28-91	DW/CF	C.	REVISED COLORS: OMIT BG, LI, LG. ADDED INT. WHITE AND INT. GRAY.	16866		WJB
2	12-2-87	LDB/WJB	B.	ADDED PART NUMBERS OCF5E1 AND OCF5L1.	16866		WJB
1	5-14-82	KJS/JK	A.	POLYSTYRENE WAS ABS.			JAK
R	9-14-81	KJS/HP		DRAWING RELEASED			HP
REV	DATE	BY	CHK	DESCRIPTION	ECN - R	CUST	SUP
					DRAWN BY KJS MAT'L: ABS $\triangle F$		SCALE FULL
					DATE 9-10-81		DRAWING NO. SS-16866
					CHK'D JK $\triangle A$		DWG SIZE A

X-ON Electronics

Largest Supplier of Electrical and Electronic Components

Click to view similar products for [Wire Ducting & Raceways](#) category:

Click to view products by [Panduit](#) manufacturer:

Other Similar products are found below :

[FG5EI25-A](#) [PED12](#) [PED8](#) [PEVEP](#) [FXOE3-10M3](#) [FZD3-3M2](#) [FZLE10-10M2](#) [FZOE10-10M1](#) [FZOLE10-10M2](#) [FZPE3-10M2](#) [923223-000](#)
[PRAF6WH-X](#) [A0405538](#) [1301150342](#) [1301230083](#) [1301150343](#) [1301230086](#) [1301240054](#) [AX101472](#) [AX102652](#) [AX102653](#) [AX102737](#)
[S62DS](#) [S65DS](#) [S75DSH](#) [A0405536](#) [A0405537](#) [A0649869](#) [FXOD3-3M1](#) [FXOE10-10M2](#) [FZLD3-3M2](#) [FZOE3-10M1](#) [FZOE3-10M2](#)
[FZOLE3-10M2](#) [FZOPE10-10M1](#) [FZPD3-3M2](#) [PZRFE4](#) [PZWIFIEN](#) [PZWIFIENA](#) [CNPSNH](#) [CNSPC](#) [5400ES](#) [WDLT-1216-72](#) [655287-000](#)
[S75DS](#) [1301180028](#) [801A-LSP](#) [TGECAW](#) [206461-000](#) [853425-000](#)