

THIS COPY IS PROVIDED ON A RESTRICTED BASIS AND IS NOT TO BE USED IN ANY WAY DETRIMENTAL TO THE INTERESTS OF PANDUIT CORP.

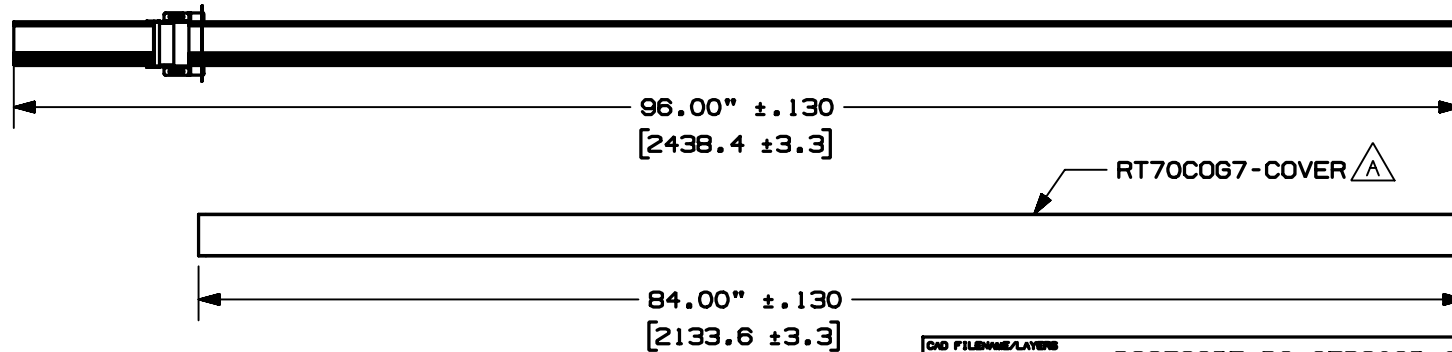
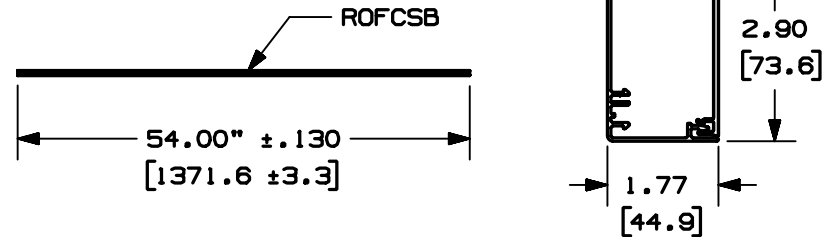
NOTES:

1. SEE CURRENT CATALOG FOR ADDITIONAL PART NUMBER SUFFIXES TO INDICATE COLOR AND/OR PACKAGE QUANTITY.
2. FOLLOWING PARTS INCLUDED IN ACCESSORY KIT:  
 TWO (2) RPCPCCWH-WHITE CEILING PLATES  
 ONE (1) RW184-INSTALLATION INSTRUCTION SHEET  
 TWO (2) ROFBSPA-BRACKET SUPPORT PEM ASSEMBLIES  
 ONE (1) RPCPRB-RAMP BRACKET  
 ONE (1) RPCPTB-"T" BRACKET  
 ONE (1) ROFCSB-SUPPORT BAR  
 ONE (1) RT70COG7-COVER  
 THREE (3) 36844-18 #10 THUMB SCREWS  
 FOUR (4) 37043-05 #10-32 MACHINE SCREWS
3. DIMENSIONS IN PARENTHESIS ARE IN METRIC.
4. ALL DIMENSIONS ARE REFERENCE DIMENSIONS.



PANDUIT PART NO.	WEIGHT
OFR20CP	8.41 lbs / EACH (3814 g / EACH)

CROSS-SECTION OF POLE



CAD FILENAME/LAYER D38586BF\_DC\_OFR20CP\_00C.PRT

**PANDUIT** CORP. TINLEY PARK, ILLINOIS  
 OFFICE FURNITURE  
 COMMUNICATION POLE (OFR20CP)  
 CUSTOMER DRAWING

UNLESS OTHERWISE SPECIFIED,  
 DIMENSIONAL TOLERANCES ARE:  
 (.X) ± (.XXX) ±  
 (.XX) ± .03 (.8) ANGLES ±

UNLESS OTHERWISE SPECIFIED,  
 ALL DIMENSIONS ARE GIVEN  
 IN INCHES, THIRD ANGLE PROJECTION.

REV	DATE	BY	CHK	DESCRIPTION	ECN	CHK	CUST	SUP
2	11-20-03	JBN	PM	A. REVISED PART NUMBER: RT70COG7 WAS OFCRC70	38586-05	RGRO	RGRO	
1	04-28-03	JBN	CVV	RELEASED TO PRODUCTION	38586-05	RGRO	RGRO	
R	04-16-03	JBN	CVV	DRAWING RELEASED				

DRAWN BY JBN	MAT'L: ALUMINUM	SCALE NONE
DATE 04-16-03		DRAWING NO. 38586-05
CHK'D CVV		DWG A SIZE

## X-ON Electronics

Largest Supplier of Electrical and Electronic Components

*Click to view similar products for [Wire Ducting](#) category:*

*Click to view products by [Panduit](#) manufacturer:*

Other Similar products are found below :

[66200A-10](#) [CVED32VEPG](#) [CVED40VEPG](#) [F512D5-5F140Y](#) [F512D5-5F200Y](#) [F512D5-5F26Y](#) [F512D5-5F30Y](#) [F512D5-5F33Y](#) [F512D5-5F34Y](#) [F512D5-5F45Y](#) [F512D5-5F50Y](#) [F512D5-5F54Y](#) [F512D5-5F66Y](#) [F512D5-5F70Y](#) [F512D5-5F75Y](#) [F512D5-5F90Y](#) [F612D5-5F100Y](#) [F612D5-5F130Y](#) [F612D5-5F50Y](#) [F612D5-5F56Y](#) [F612D5-5F58Y](#) [F6L12D5-5F46](#) [F912D5-5F11Y](#) [F912D5-5F170Y](#) [F912D5-5F175Y](#) [F912D5-5F230Y](#) [F912D5-5F300Y](#) [F912D5-5F55Y](#) [F912D5-5F56Y](#) [F912D5-5F63Y](#) [F912D5-5F6Y](#) [F912D5-5F75Y](#) [F912D5-5F85Y](#) [F912D5-5F86Y](#) [F912D5-5F88Y](#) [F912D5-5F96Y](#) [FAP0047WBLMTP](#) [FAP12WBRDRDDLZ](#) [FAP12WDYLYLDLZ](#) [FAP12WEORORDLZ](#) [FAP6WEORORDLZ](#) [FAP6WFDBDBDLZ](#) [FAP8WEORORDLZ](#) [FCE2UWCL](#) [800A-LB](#) [802A-ECSP](#) [802I-ICSP](#) [FJQADH](#) [FJQFXT](#) [PED10](#)