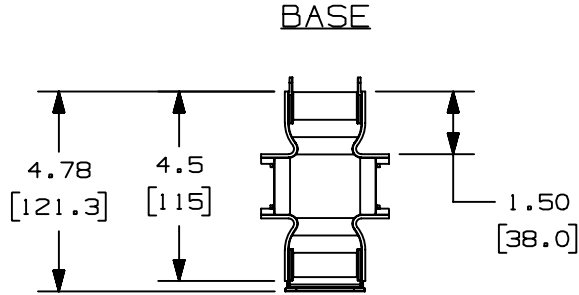
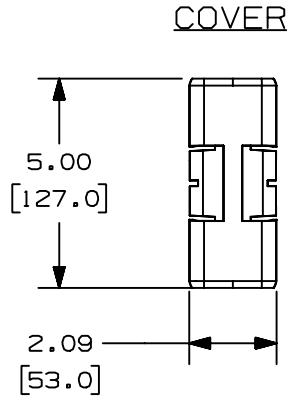


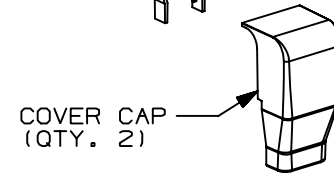
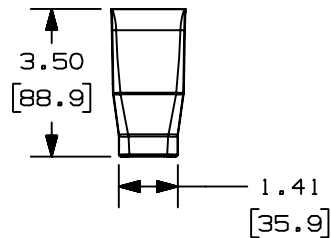
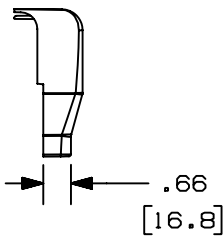
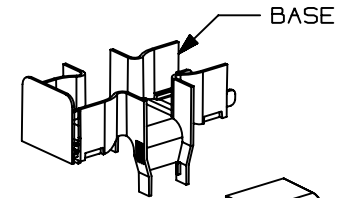
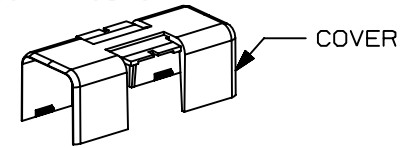
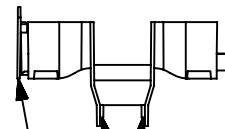
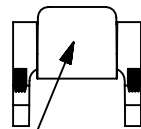
THIS COPY IS PROVIDED ON A RESTRICTED BASIS AND IS NOT TO BE USED IN ANY WAY DETRIMENTAL TO THE INTERESTS OF PANDUIT CORP.



PANDUIT PART NO.	WEIGHT
OFR20DSO	.306 lbs (139.0 g)



- NOTES:**
- SEE CURRENT CATALOG FOR ADDITIONAL PART NUMBER SUFFIXES TO INDICATE COLOR AND/OR PACKAGE QUANTITY.
  - DIMENSIONS IN PARENTHESES ARE IN METRIC.
  - TAB STOPS ARE USED TO POSITION VERTICAL RACEWAY (OFVR5).
  - FITTING WORKS WITH FURNITURE PANELS 1.88"-2.30" THICK.



CAD FILENAME/LAYERS D38883BC\_DC\_OFR20DSO\_00B.PRT

**PANDUIT** CORP. TINLEY PARK, ILLINOIS  
OFFICE FURNITURE DOUBLE  
SPILL-OVER FITTING (OFR20DSO)  
CUSTOMER DRAWING

UNLESS OTHERWISE SPECIFIED,  
DIMENSIONAL TOLERANCES ARE:  
(.X) ± (.XXX) ±  
(.XX) ±.03 (.8) ANGLES ±

UNLESS OTHERWISE SPECIFIED,  
ALL DIMENSIONS ARE GIVEN  
IN INCHES, THIRD ANGLE PROJECTION.

1	02-16-05	JHEP	RMHI	A. REVISED PART WEIGHT	38883-03	RGRC	RGRO																	
R	07-06-04	JBN	RMHI	DRAWING RELEASED																				
REV	DATE	BY	CHK	DESCRIPTION	ECN	CHK	CUST	SUP																
----- RELEASED TO PRODUCTION -----										DRAWN BY JBN					MAT'L: PVC					SCALE NONE				
										DATE 07-06-04					DRAWING NO. 38883-03					DWB A				
										CHK'D RMHI					SIZE									

## X-ON Electronics

Largest Supplier of Electrical and Electronic Components

*Click to view similar products for [Wire Ducting & Raceways](#) category:*

*Click to view products by [Panduit](#) manufacturer:*

Other Similar products are found below :

[800A-LB](#) [801I-LSP](#) [802A-ECSP](#) [802I-ICSP](#) [923223-000](#) [PRAF6WH-X](#) [A0405538](#) [1301150342](#) [1301160034](#) [1301170070](#) [1301180011](#)  
[1301230083](#) [1301230153](#) [1301240273](#) [1301250006](#) [1302261238](#) [1302261321](#) [1302262552](#) [1302263103](#) [1302263178](#) [1302263259](#)  
[1302263816](#) [1302263860](#) [1302264375](#) [1302264390](#) [1301150343](#) [1301160030](#) [1301170050](#) [1301170051](#) [1301170061](#) [1301180013](#)  
[1301230086](#) [1301230130](#) [1301240054](#) [1302260055](#) [1302260376](#) [1302261343](#) [1302261344](#) [1302262674](#) [1302263095](#) [1302263166](#)  
[1302263209](#) [1302263513](#) [1302263851](#) [1302263870](#) [1302264137](#) [1302264218](#) [DD1/J](#) [AX102007](#) [AX102411](#)